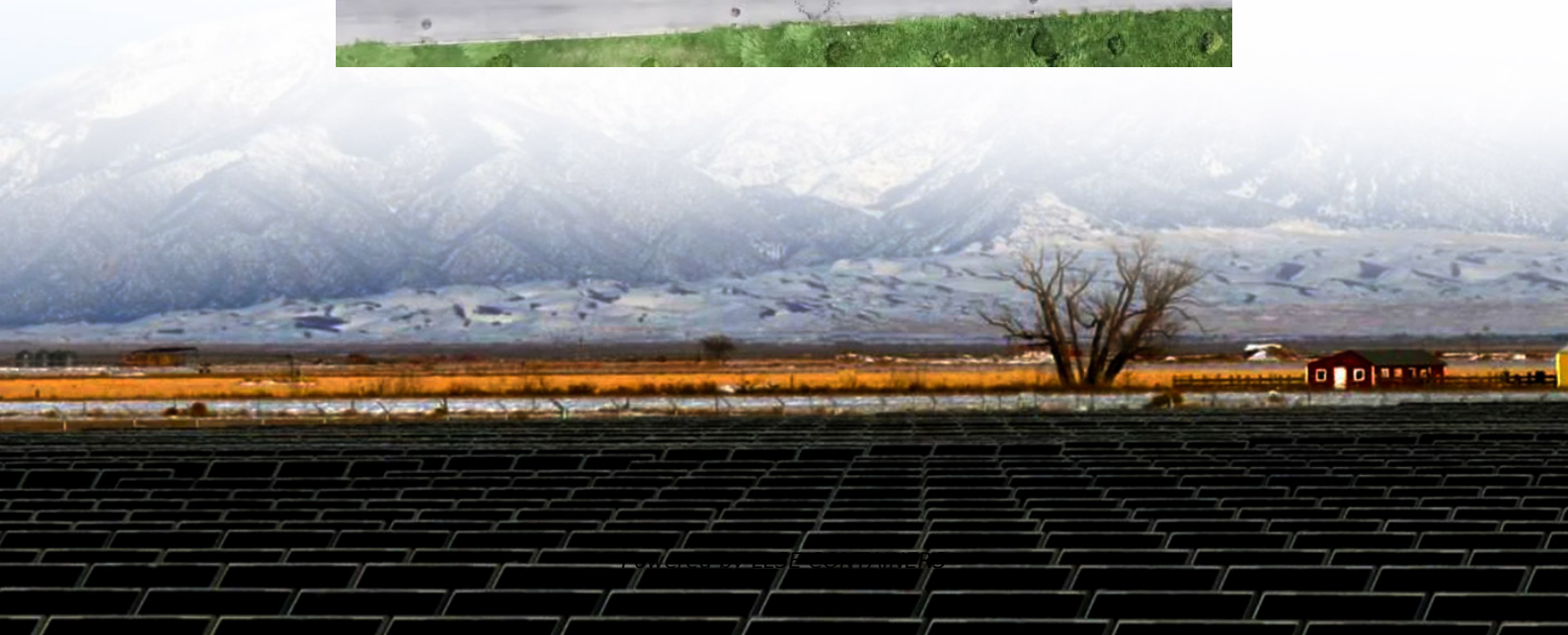


How many watts does a home solar water pump have





Overview

How many watts is a 1 hp water pump?

1 HP Submersible and surface water pumps used for livestock, off-grid living, irrigation or aeration all require a baseline amount of watts to effectively run the pump all day off of solar power. If you were to Google “HP to watts” a calculator would pop up and give you this answer. (insert photo) 1 HP equals 750 Watts.

How much power does a water pump use?

However, the pump will typically draw 20-50% or more power than just that calculation based on real life usage, efficiency and power factor. For example, the RPS Pro Deep 1 HP uses 1,200 watts of solar panels. How high can a 12v water pump lift?

.

How many solar panels do you need for a water fountain?

Example for a Small 12V Fountain: A small 12V water fountain pump might only need a 20-watt solar panel. Example for a Deep Well: To run a powerful 1 HP well pump, you might need an array of 1,500 watts (1.5 kW) of solar panels. Stop guessing.

How much does a solar water pump cost?

The cost varies dramatically. A small, all-in-one solar fountain pump kit can be \$20 – \$50. A larger solar well pump costs between \$1,200 and \$3,000, for an average of \$2,000. Prices depend on the well pump size, flow rate, and more. What are the disadvantages of a solar water pump?



How many watts does a home solar water pump have

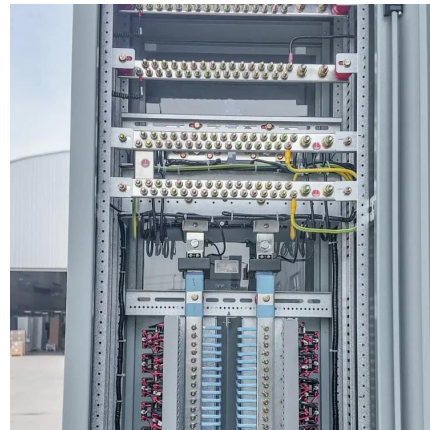


[How Many Solar Panels Do You Need to Run a 1 HP Water Pump?](#)

To run a 1 horsepower (HP) water pump, you usually need twelve 100-watt (W) solar panels, for a total of 1200W. This depends on factors like the wattage of the solar panels and the efficiency ...

[How Many Solar Panels for a Solar Water Pump?](#)

Sep 24, 2025 · A standard 1 HP (horsepower) water pump typically requires between 800 to 1200 watts of solar panels. This usually translates to three 400W panels or twelve 100W panels.



[How To Calculate Solar Power Water Pump](#)

Oct 13, 2025 · The Solar Water Pump Sizing Calculator is a tool designed to calculate the solar panel and battery requirements for a water pump, particularly useful for individuals relying on ...

[How many watts does a 1 hp water pump use?](#)

1 HP Submersible and surface water pumps used for livestock, off-grid living, irrigation or aeration all require a baseline amount of watts to effectively run the pump all day off of solar



power. If ...



[How Many Watts Does A Water Pump Use?](#)

Aug 31, 2025 · If you are thinking of buying a new water pump you might be wondering what the wattage of the device is. Average water pumps use between 250 and 1,100 watts of electricity. ...

[Solar Water Pumps: The Ultimate Guide \(Sizing, Cost](#)

Aug 4, 2025 · The definitive guide to solar water pumps. We cover how they work, how to size the right panels and pump for your project, costs, and installation. Use our interactive calculator to ...



[Solar Pump Wattage Explained , Power Output & Fountain ...](#)

Sep 24, 2025 · Understand solar pump wattage and what it really means. Learn how power output impacts fountain performance and explore Poposoap eco solar pond solutions.



How many watts does a 240V well pump use

May 15, 2025 · A 240V well pump uses between 700 and 1,500 watts, depending on the pump's horsepower, well depth, and pump type. Learn how to calculate it in this guide.



How Many Solar Panels Do You Need to Run a Water Pump?

Sep 8, 2025 · To run a water pump on solar, multiply the pump's power by 1.5 to calculate the total solar panel wattage needed. For example, a 1000W pump requires at least 1500W of ...

Contact Us

For catalog requests, pricing, or partnerships, please visit:
<https://llsolarenergy.co.za>

Scan QR Code for More Information



<https://llolarenergy.co.za>