

# How many volts can a 24 volt inverter withstand





## Overview

---

As a rule of thumb, the minimum required battery capacity for a 12-volt system is around 20 % of the inverter capacity. For 24-volt inverters, it is 10 %. The battery capacity for a 12-volt Mass Sine 12/1200, for inst.

What is the difference between a 12V and 24V inverter?

The difference between a 12V and 24V inverter is the amount of input volts it can handle. This is the voltage flowing from the battery into the inverter before the electricity is converted from DC to AC. So a 12V inverter is designed for 12 volts input from the battery. And a 24V inverter is designed for 24 volts input from the battery.

How much battery does a 24 volt inverter use?

For 24-volt inverters, it is 10 %. The battery capacity for a 12-volt Mass Sine 12/1200, for instance, is 240 Ah, while a 24-volt Mass Sine 24/1500 inverter would require at least 150 Ah. The indicated battery capacity is only for the inverter. The capacity required for other loads should be added to it. How much power does an inverter consume?

.

Is a 24V inverter better than a battery?

A 24V inverter, on the other hand, can handle higher power loads, often up to 3,000 watts or more, with a more efficient current draw. Because the higher voltage allows for less current to be drawn from the battery, it results in lower energy losses and increased efficiency.

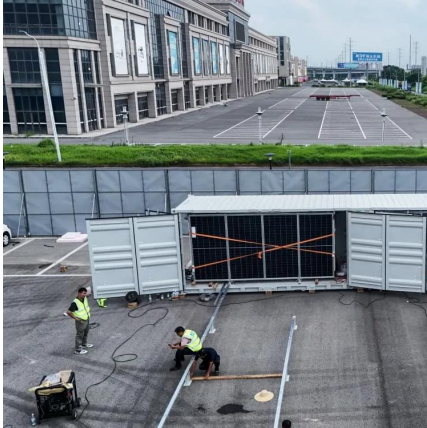
What is a 24V inverter used for?

Backup power systems for single devices like lights or small appliances. 24V inverters are better suited for larger systems where you need to power multiple devices or larger appliances. They are commonly used in: Larger RVs or mobile homes with more electrical equipment. Off-grid homes that require more power.



## How many volts can a 24 volt inverter withstand

---



### [What Will a 2400W Inverter Run and How Many Batteries for It](#)

Sep 16, 2025 · What will a 2400W inverter run? Discover appliance compatibility, continuous vs surge power, and how many batteries you need for reliable, efficient operation.

### [What Will An Inverter Run & For How Long? \(With Calculator\)](#)

Mar 3, 2023 · I saw on many forums that most people are confused about what they can run on their 1000,1500,2000,3000, & 5000-watt inverter and how long will their inverter last with a ...



### [Choosing the Right 24VDC to 120VAC or 110VAC Inverter ...](#)

Apr 22, 2025 · Choosing the right voltage is crucial to choosing the right inverter for your solar system. 24VDC stands for 24 Volts of Direct Current. It refers to the input voltage that the ...

### [What Will An Inverter Run & For How Long?](#)

Mar 3, 2023 · I saw on many forums that most people are confused about what they can run on their 1000,1500,2000,3000, & 5000-watt inverter ...



[How much power does an inverter draw? - Help Centre](#)

The current draw from a 12V or 24V battery when running an inverter depends on the actual load, not the inverter size. A quick rule is to divide watts by 10 for 12V systems or 20 for 24V ...



[12V vs 24V Inverter: What's the difference ...](#)

The difference between a 12V and 24V inverter is the amount of input volts it can handle. This is the voltage flowing from the battery into the inverter ...



[12V vs 24V Inverter: What's the difference between 12 and 24 Volt](#)

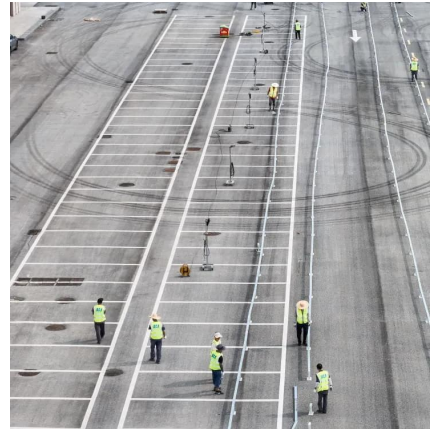
The difference between a 12V and 24V inverter is the amount of input volts it can handle. This is the voltage flowing from the battery into the inverter before the electricity is converted from DC ...





[What Will a 2400W Inverter Run and How ...](#)

Sep 16, 2025 · What will a 2400W inverter run? Discover appliance compatibility, continuous vs surge power, and how many batteries you ...



[Frequently Asked Questions about Inverters](#)

Frequently Asked Questions about Inverters How much battery capacity do I need with an inverter? As a rule of thumb, the minimum required battery capacity for a 12-volt system is ...

[How many appliances can a 24 Volt 220v Inverter power?](#)

Sep 3, 2025 · For those with high - power demands, our Inverter 48v 220v 6000w can handle multiple heavy - duty appliances at once. So, in conclusion, the number of appliances a 24 ...



**Inverter Calculator**

Change values in the boxes with arrows and the calculator will adjust to show you other system specifications: Inverter Input Inverter Power Rating Inverter Output 12VDC 24VDC 48VDC ...



### 12V vs 24V Inverter: What's The Difference & Which is Better

Inverters play a crucial role in modern power systems, converting DC (direct current) to AC (alternating current) for use in everyday devices. When choosing between a 12 voltage ...

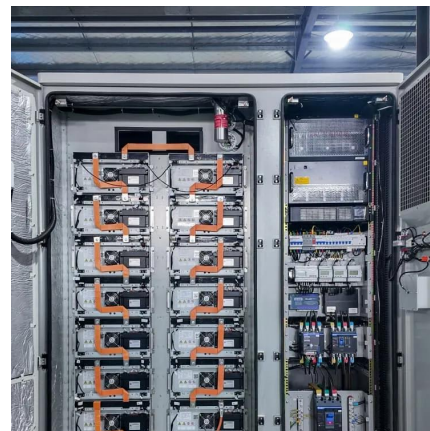


### 12V vs 24V Inverters Key Differences and ...

Jan 21, 2025 · A 24V inverter, on the other hand, can handle higher power loads, often up to 3,000 watts or more, with a more efficient current draw. ...

### 12V vs 24V Inverters Key Differences and Which One is Right ...

Jan 21, 2025 · A 24V inverter, on the other hand, can handle higher power loads, often up to 3,000 watts or more, with a more efficient current draw. Because the higher voltage allows for ...



### 12V vs 24V Inverter: What's The Difference

Inverters play a crucial role in modern power systems, converting DC (direct current) to AC (alternating current) for use in everyday devices. When ...



## Contact Us

---

For catalog requests, pricing, or partnerships, please visit:  
<https://llsolarenergy.co.za>

### Scan QR Code for More Information



<https://llsolarenergy.co.za>