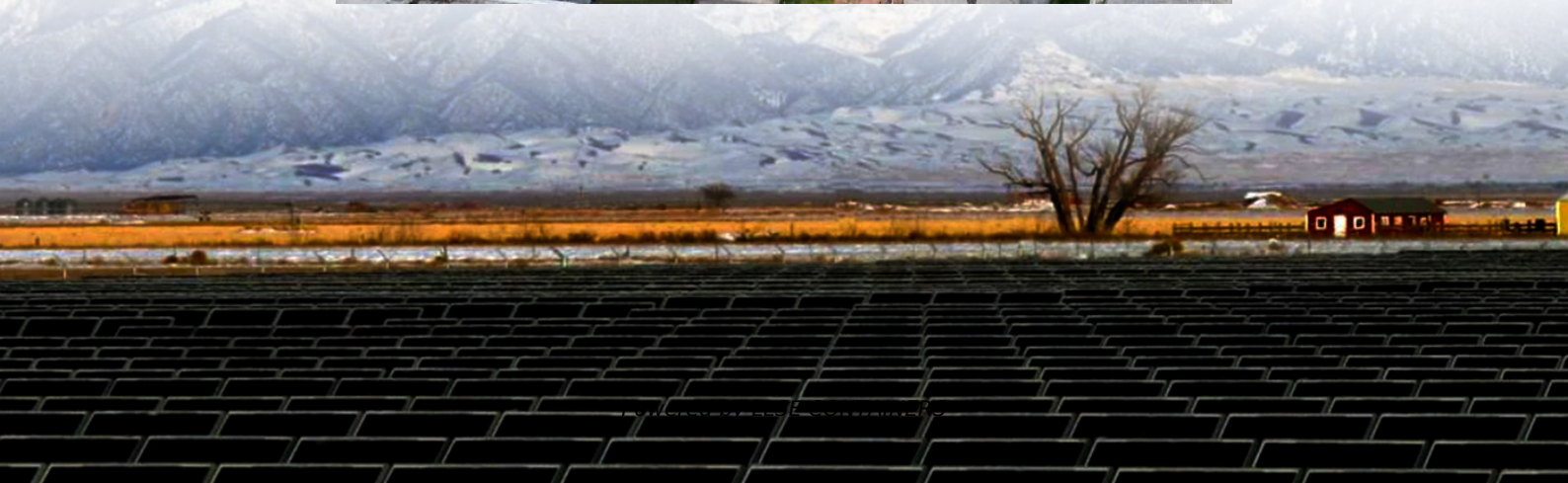


How many electrical appliances can the energy storage power station supply





Overview

What is an energy storage system?

An energy storage system (ESS) for electricity generation uses electricity (or some other energy source, such as solar-thermal energy) to charge an energy storage system or device, which is discharged to supply (generate) electricity when needed at desired levels and quality. ESSs provide a variety of services to support electric power grids.

Why do we need energy storage systems?

As a consequence, the electrical grid sees much higher power variability than in the past, challenging its frequency and voltage regulation. Energy storage systems will be fundamental for ensuring the energy supply and the voltage power quality to customers.

What are battery storage power stations?

Battery storage power stations are usually composed of batteries, power conversion systems (inverters), control systems and monitoring equipment. There are a variety of battery types used, including lithium-ion, lead-acid, flow cell batteries, and others, depending on factors such as energy density, cycle life, and cost.

What is the power capacity of a battery energy storage system?

As of the end of 2022, the total nameplate power capacity of operational utility-scale battery energy storage systems (BESSs) in the United States was 8,842 MW and the total energy capacity was 11,105 MWh. Most of the BESS power capacity that was operational in 2022 was installed after 2014, and about 4,807 MW was installed in 2022 alone.



How many electrical appliances can the energy storage power station

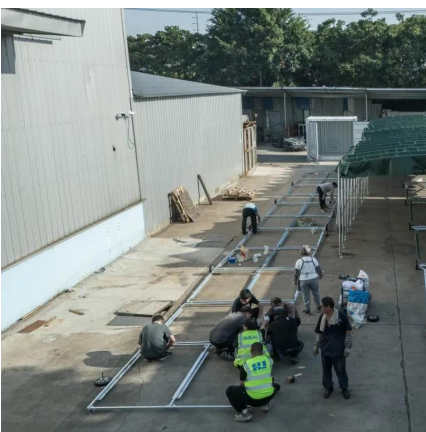


[What Appliances Can a Portable Power Station Run?](#)

Jul 22, 2025 · Fortunately, spending time off-grid doesn't have to mean living a spartan lifestyle. If you have a portable power station, you can operate many devices off-grid, including major ...

Electrical Energy Storage

4 days ago · absorb excess power generated locally for example from a rooftop solar panel. Storage is an important element in microgrids where it allows for better planning of local ...



[Energy storage for electricity generation](#)

An energy storage system (ESS) for electricity generation uses electricity (or some other energy source, such as solar-thermal energy) to charge an energy storage system or device, which is ...

[Challenge: How many devices can be connected to the energy storage](#)

Apr 4, 2024 · Based on the exploration of energy storage systems, the maximum number of devices that can connect to a power supply hinges on multiple factors. 1. Energy capacity



and ...



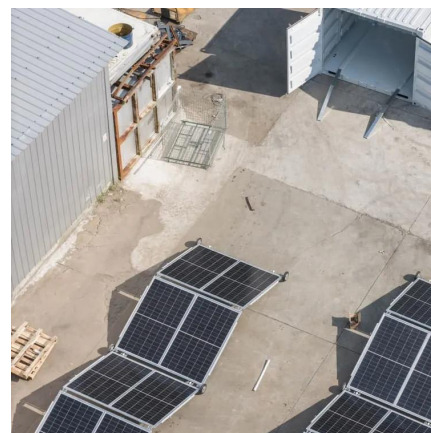
how many electrical appliances can the energy storage power station supply

As the photovoltaic (PV) industry continues to evolve, advancements in how many electrical appliances can the energy storage power station supply have become instrumental in ...



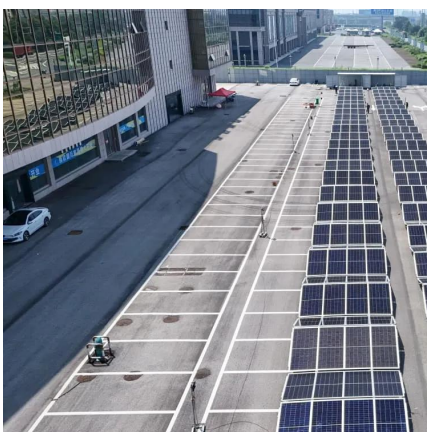
Energy storage for electricity generation

Aug 30, 2024 · An energy storage system (ESS) for electricity generation uses electricity (or some other energy source, such as solar-thermal energy) to charge an energy storage system or ...



The role of energy storage systems for a secure energy supply...

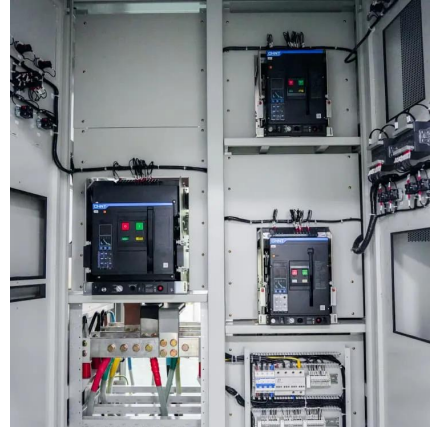
Nov 1, 2024 · The way to produce and use energy is undergoing deep changes with the fast-pace introduction of renewables and the electrification of transportation and heating systems. As a ...





[How Many Appliances Does Your Station Support?](#)

Jul 17, 2025 · Conclusion: Power More, Worry Less Understanding how many appliances your power station can support is crucial for making the most of your investment. By knowing your ...



[MPMC HYBRID POWER STATION SB Series](#)

Dec 2, 2025 · The system ensures power supply at night and in remote areas without main grid, saving at least 3,600 kWh of electricity every year. By expanding the capacity, other than ...

[Battery storage power station - a comprehensive guide](#)

14 hours ago · A battery storage power station, also known as an energy storage power station, is a facility that stores electrical energy in batteries for later use. It plays a vital role in the modern ...



[How many electrical appliances can the energy storage power station](#)

Jun 20, 2024 · The potential number of electrical devices an energy storage power station can support is contingent upon several factors, including 1. Total capacity of the en...



Contact Us

For catalog requests, pricing, or partnerships, please visit:
<https://llsolarenergy.co.za>

Scan QR Code for More Information



<https://llsolarenergy.co.za>