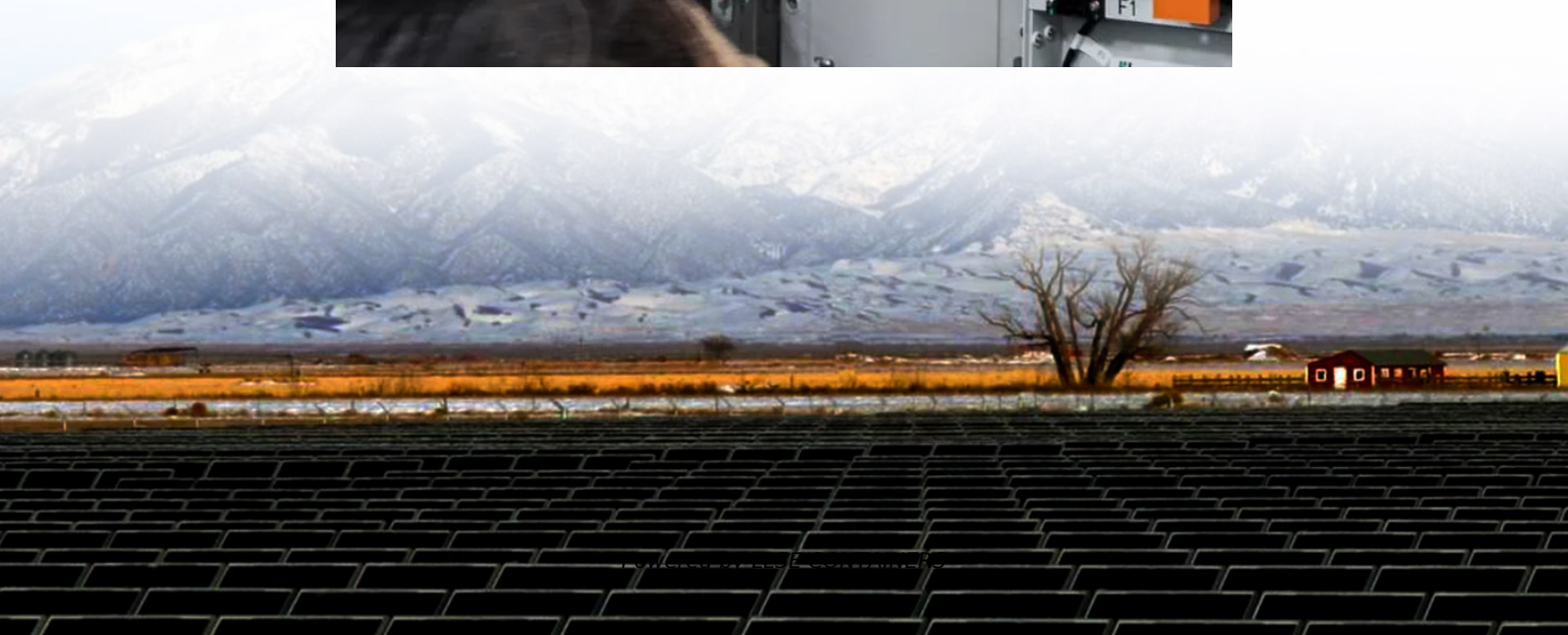


How long does it take to charge a flywheel energy storage





Overview

How does a flywheel energy storage system work?

Flywheel Energy Storage Systems (FESS) rely on a mechanical working principle: An electric motor is used to spin a rotor of high inertia up to 20,000-50,000 rpm. Electrical energy is thus converted to kinetic energy for storage. For discharging, the motor acts as a generator, braking the rotor to produce electricity.

What is the difference between a flywheel and a battery storage system?

Flywheel Systems are more suited for applications that require rapid energy bursts, such as power grid stabilization, frequency regulation, and backup power for critical infrastructure. Battery Storage is typically a better choice for long-term energy storage, such as for renewable energy systems (solar or wind) or home energy storage.

Can a flywheel energy storage system maintain power grid frequency?

Several innovative power utilities already use flywheel storage systems to maintain power grid frequency. Renewable energy is knocking on flywheel energy's door. The system can respond instantly, unlike battery storage. However on the downside, flywheel energy storage systems have low energy storage density per unit of weight and volume.

Do power utilities need a flywheel storage system?

Power utilities need innovative ways to store renewable wind and solar energy, during low demand periods, so they can release it after sunset when demand is high. Several innovative power utilities already use flywheel storage systems to maintain power grid frequency. Renewable energy is knocking on flywheel energy's door.



How long does it take to charge a flywheel energy storage



[A review of flywheel energy storage systems: state of the ...](#)

Mar 15, 2021 · This paper gives a review of the recent Energy storage Flywheel Renewable energy Battery Magnetic bearing developments in FESS technologies. Due to the highly ...

[Technology: Flywheel Energy Storage](#)

Oct 30, 2024 · Summary of the storage process
Flywheel Energy Storage Systems (FESS) rely on a mechanical working principle: An electric motor is used to spin a rotor of high inertia up to ...



[Flywheel Energy Storage Systems and Their Applications: A ...](#)

Apr 1, 2024 · The flywheel energy storage system (FESS) offers a fast dynamic response, high power and energy densities, high efficiency, good reliability, long lifetime and low maintenance ...

[A review of flywheel energy storage systems: state of the art ...](#)

Feb 1, 2022 · Thanks to the unique advantages such as long life cycles, high power density, minimal environmental impact, and high power quality such as fast response and voltage ...



[Flywheel Energy Storage System Basics](#)

Aug 13, 2025 · A flywheel energy storage system is therefore functionally similar to a hydro power station, that stores gravitational energy in water. In that instance, an electric motor pumps ...



[Flywheel Energy Storage System: What Is It and How Does It ...](#)

In essence, a flywheel stores and releases energy just like a figure skater harnessing and controlling their spinning momentum, offering fast, efficient, and long-lasting energy storage. ...



[Flywheel Energy Storage Discharge Time: What You Need to ...](#)

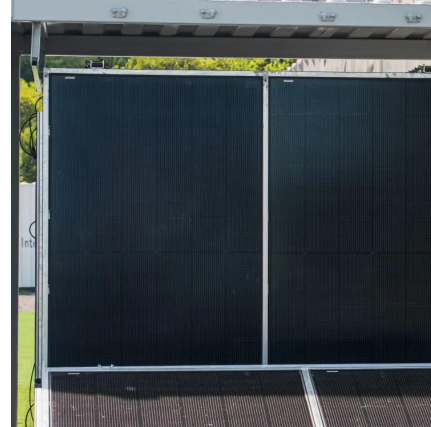
Aug 4, 2022 · Now imagine that top weighs 10 tons and stores enough energy to power your home for hours. That's flywheel energy storage in a nutshell--minus the childhood nostalgia. ...





[Flywheel Energy Storage -> Term](#)

Dec 1, 2025 · Flywheel Energy Storage Meaning
-> A Flywheel Energy Storage system is a mechanical device that stores electricity as kinetic energy in a rapidly spinning rotor for fast ...



[Full-scale analysis of flywheel energy storage](#)

Aug 3, 2022 · The flywheel energy storage system has the advantages of fast response, long life, good temperature adaptability, high efficiency, large capacity, and environmental friendliness. ...

[Flywheel Energy Storage for Electric Vehicle \(EV\) Charging ...](#)

Sep 23, 2024 · How do you think flywheel energy storage compares to traditional battery storage for EV charging stations in terms of long-term cost efficiency? FAQs Why are flywheels ...



Contact Us

For catalog requests, pricing, or partnerships, please visit:
<https://llsolarenergy.co.za>



Scan QR Code for More Information



<https://llsolarenergy.co.za>