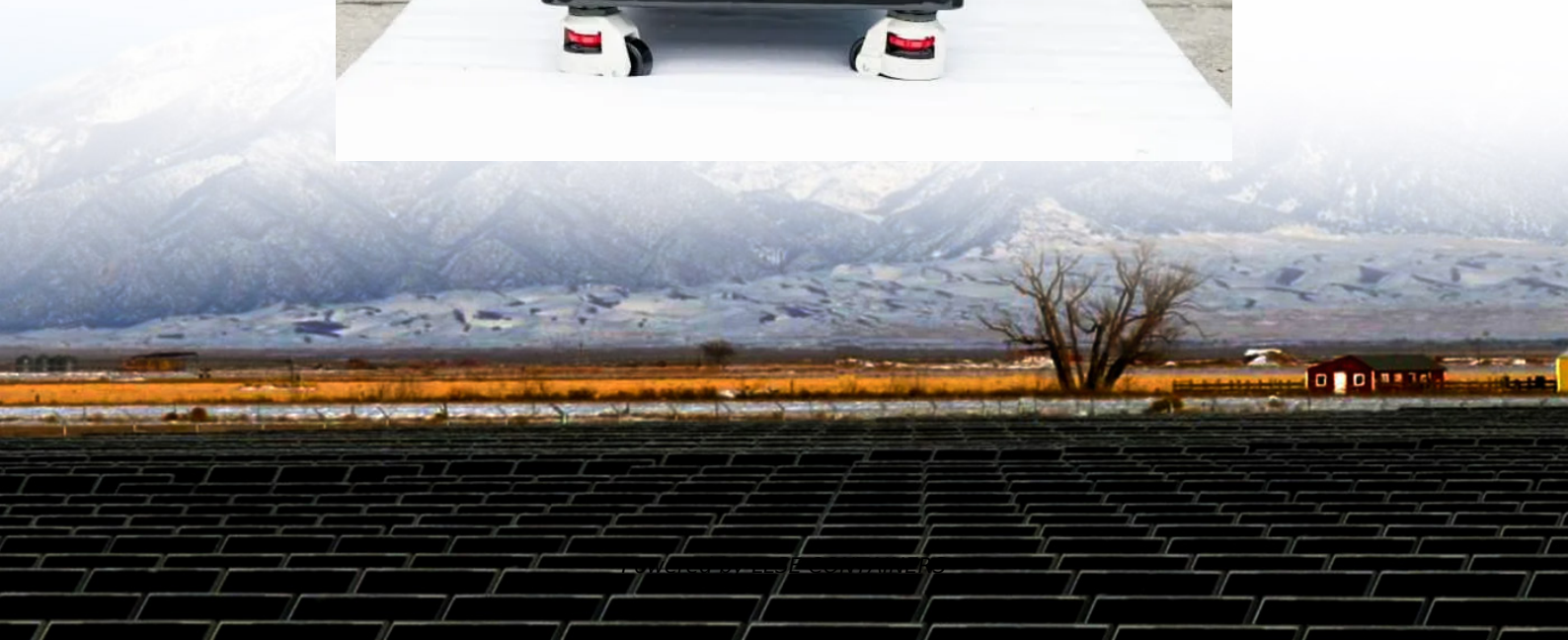


How big of an inverter can a 100w solar power system be equipped with





Overview

For a 100-watt solar panel, the ideal inverter size is within the 300 to 600-watt range, specifically a 12V DC to 220V AC model. What size solar inverter do I need?

This equates to the ratio of the DC power in the solar system to the AC power output from the inverter. For most solar systems, this ratio is going to be greater than 1, but less than 1.25. So for a 100W solar panel, the size of the inverter in this system should be greater than 100W and less than 125W. 2. Why is the size of the inverter important?

.

Do I need an inverter for a 100W solar panel?

However, do not install an inverter that is much larger than the probability of the solar panels, as this may also reduce the efficiency of the solar panels. For a 100W solar panel, you will need an inverter with a power of between 100W and 125W. But this is just a theoretical value.

How many watts can a solar inverter draw?

A 12V 5A PWM or MPPT charge controller is required to keep the battery from overcharging. With this system you can draw 100W from the inverter for 3 to 4 hours or 200W for 1 and half hours. Calculating inverter sizes is the same no matter what the solar panel output is.

How to calculate solar inverter size?

Generally, the inverter's size is calculated based on the DC rating of your solar panel system. If you install the 10-kilowatt system, you must have around an inverter with 10000 watts, plus or minus a small percentage. Your solar array size is a crucial loss on the power generation and maximum utilization of the connected equipment.



How big of an inverter can a 100w solar power system be equipped

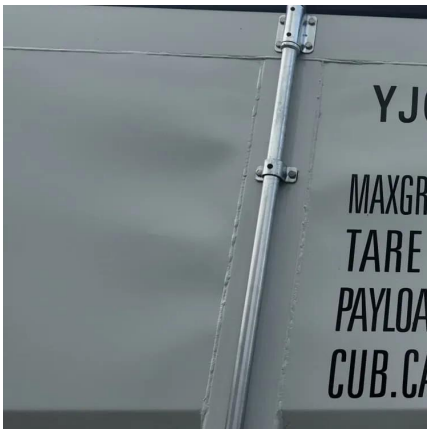


[What Size Inverter For a 100W Solar Panel?](#)

A 12V 100W solar panel needs a 12V 200W inverter to run AC powered appliances, and at least a 100ah battery to store energy. A 12V 5A PWM or MPPT charge controller is required to keep ...

[What size inverter for 100 watt solar panel?](#)

Sep 6, 2023 · For a 100-watt solar panel, the ideal inverter size is within the 300 to 600-watt range, specifically a 12V DC to 220V AC model. This is crucial because the inverter serves as ...



[Inverter Size Calculator - self2solar](#)

Feb 20, 2025 · Optimize your solar system by calculating the ideal inverter size. Simply input panel specs for a recommended inverter power range that ensures efficiency and safety today!

[Solar Inverter Sizing Guide: How to Size Your Inverter](#)

Sep 29, 2025 · Choosing the right solar inverter size can make or break your solar investment. Get it wrong, and you'll either waste money on oversized equipment or lose precious energy ...



[How to Choose the Right Inverter for 100W Solar Power ...](#)

For a 100W solar panel system, your inverter should be like a reliable assistant - strong enough to handle surprises but not oversized. The magic formula i Contact online >> HOME / How to ...



[How To Size A Solar Inverter in 3 Easy Steps](#)

After solar panels, the inverter is the most critical component of a solar system. But how big should your inverter be? In this guide, we share 3 easy steps on how to size a solar inverter ...



[The Only Inverter Size Chart You'll Ever Need](#)

Sep 25, 2023 · We created a comprehensive inverter size chart to help you select the correct inverter to power your appliances. The need for an inverter size chart first became apparent ...



[How to Choose the Right Size Solar Inverter: Step-by-Step ...](#)

Jul 15, 2025 · Wondering what size solar inverter do I need for your solar system? This guide walks you through calculating inverter size based on panel capacity, power usage, and safety ...



[What Size Inverter For a 100W Solar Panel?](#)

How to Calculate Solar Inverter Size
Important Reminders on The Calculations
Do You Need A Solar Inverter?
Can I Connect Several 100W Solar Panels to An Inverter?
Tips For Using An Inverter with Solar Panels
Conclusion
If you want to build a solar array you need more than 100 watts. Fortunately you can connect several of these to gain more power. But make sure the inverter has enough capacity for what you need. The number of solar panels you can connect to inverter depends on its capacity. If the inverter is 200W, you can only use 2 x 100W solar panels maximum. I See more on [portablesolarexpert](#) [jmhpower](#)

What Size Inverter Do I Need for a 100 Watt ...

Aug 11, 2024 · CONCLUSION: For a 100W solar panel, you will need an inverter with a power of between 100W and 125W. But this is just a ...

[What Inverter Size is Best for a 100Ah Battery?](#)

When setting up a solar, off-grid, or backup power system, understanding the compatibility between your battery size and inverter capacity is essential for both performance and safety. A ...



[What Size Inverter Is Best for a 100W Solar Panel?](#)

Jul 11, 2023 · Final Thoughts on What Size Inverter is Best for a 100W Solar Panel At the end of this cable, inverter boxes play a big role in the capabilities of the solar panel system as a ...

[What Size Inverter Do I Need for a 100 Watt Solar Panel](#)

Aug 11, 2024 · CONCLUSION: For a 100W solar panel, you will need an inverter with a power of between 100W and 125W. But this is just a theoretical value. If you want to find the right ...



Contact Us

For catalog requests, pricing, or partnerships, please visit:
<https://llsolarenergy.co.za>



Scan QR Code for More Information



<https://llolarenergy.co.za>