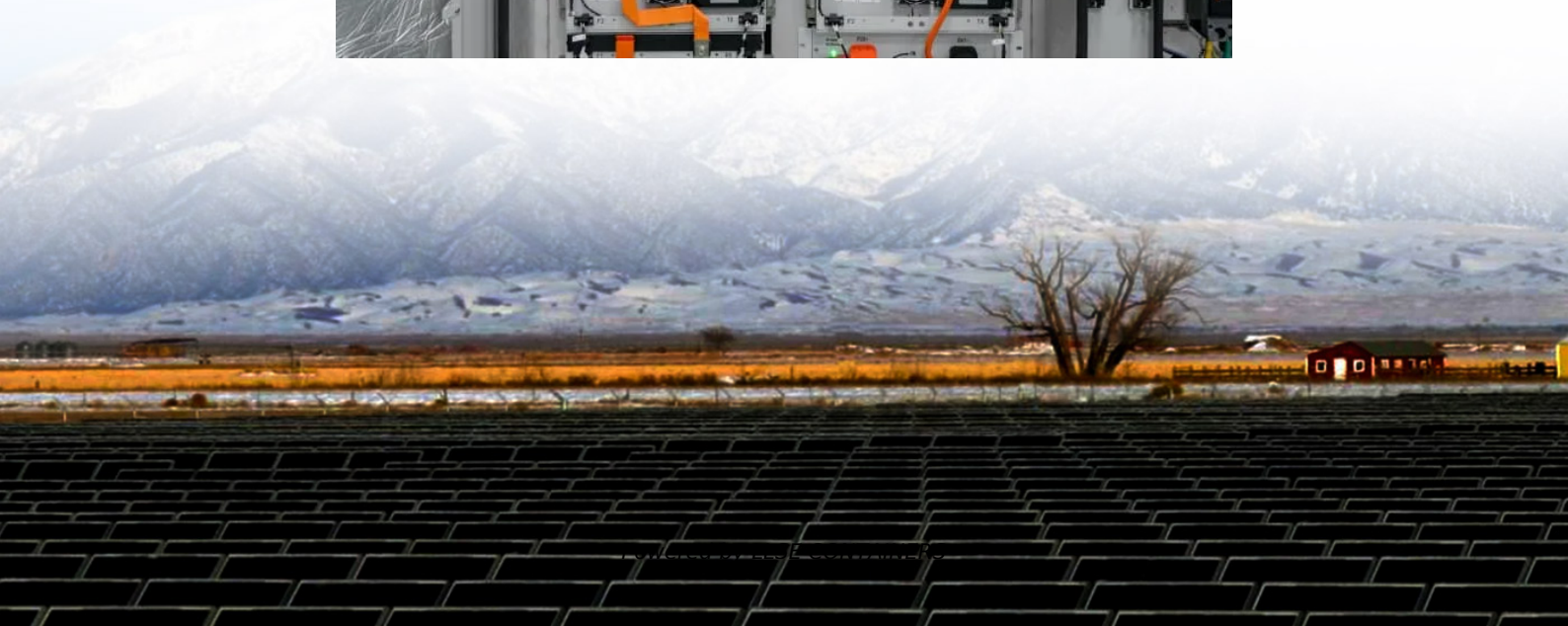


How big an inverter should I use for a 600w solar panel





Overview

What are the different solar inverter sizes?

Solar generators range in size from small generators for short camping trips to large off-grid power systems for a boat or house. Consequently, inverter sizes vary greatly. During our research, we discovered that most inverters range in size from 300 watts up to over 3000 watts. In this article, we guide you through the different inverter sizes.

Do I need an inverter size chart?

The need for an inverter size chart first became apparent when researching our DIY solar generator build. Solar generators range in size from small generators for short camping trips to large off-grid power systems for a boat or house. Consequently, inverter sizes vary greatly.

How much power does a solar inverter need?

Combine your findings: Highest Surge: e.g., 600 W from fridge. → Recommended Inverter Size: 1,200 W minimum. If you later add an air conditioner (2,400 W surge), you'd bump up to a 3,000 W inverter—like the Lefor 3000W in the Lefor Solar Inverter Series.

How do I choose a solar inverter?

Knowing your array size allows you to choose an inverter that can handle that production efficiently—without over- or under-investing in capacity. The second step is understanding your system's DC-to-AC ratio, one of the most important metrics when sizing a solar inverter.



How big an inverter should I use for a 600w solar panel



[How to Determine the Right Solar Inverter Size for Your System](#)

Aug 12, 2025 · Learn how to choose the right solar inverter size for maximum efficiency, energy savings, and system performance. Avoid common pitfalls and boost ROI.

[Solar Inverter Sizing Guide for Maximum Efficiency , Mingch](#)

Jun 27, 2025 · When choosing a solar inverter, size matters more than you might think. The right solar inverter sizing helps ensure your system performs efficiently, qualifies for incentives, and ...



[How to Choose the Right Size Solar Inverter: Step-by-Step ...](#)

Jul 15, 2025 · Wondering what size solar inverter do I need for your solar system? This guide walks you through calculating inverter size based on panel capacity, power usage, and safety ...



[Inverter Size Calculator - self2solar](#)

Feb 20, 2025 · Optimize your solar system by calculating the ideal inverter size. Simply input panel specs for a recommended inverter power range that ensures efficiency and safety today!



[Solar Inverter Sizing Guide: How to Size Your Inverter](#)

Sep 29, 2025 · Learn how to properly size your solar inverter with our complete guide. Discover the optimal DC-to-AC ratio and avoid costly sizing mistakes.



[What Size Inverter Do I Need for a Solar Panel System?](#)

Apr 1, 2025 · Three Steps to Precise Calculation
Step 1: Solar System Architecture Diagnosis
Before selecting an inverter, the overall architecture of the PV system needs to be clarified. Off ...



[The Only Inverter Size Chart You'll Ever Need](#)

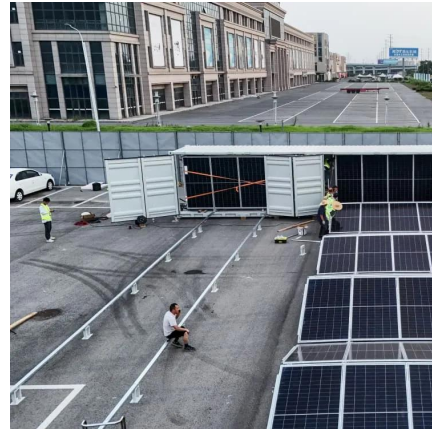
Sep 25, 2023 · We created a comprehensive inverter size chart to help you select the correct inverter to power your appliances. The need for an inverter size chart first became apparent ...





[What Size Solar Inverter Do I Need? Experts Break It Down](#)

Jul 18, 2025 · What Size Solar Inverter Do I Need?
A solar inverter should closely match your solar system's output in kW--typically within 80% to 120% of your total panel capacity. Key ...



Contact Us

For catalog requests, pricing, or partnerships, please visit:
<https://llsolarenergy.co.za>

Scan QR Code for More Information



<https://llsolarenergy.co.za>