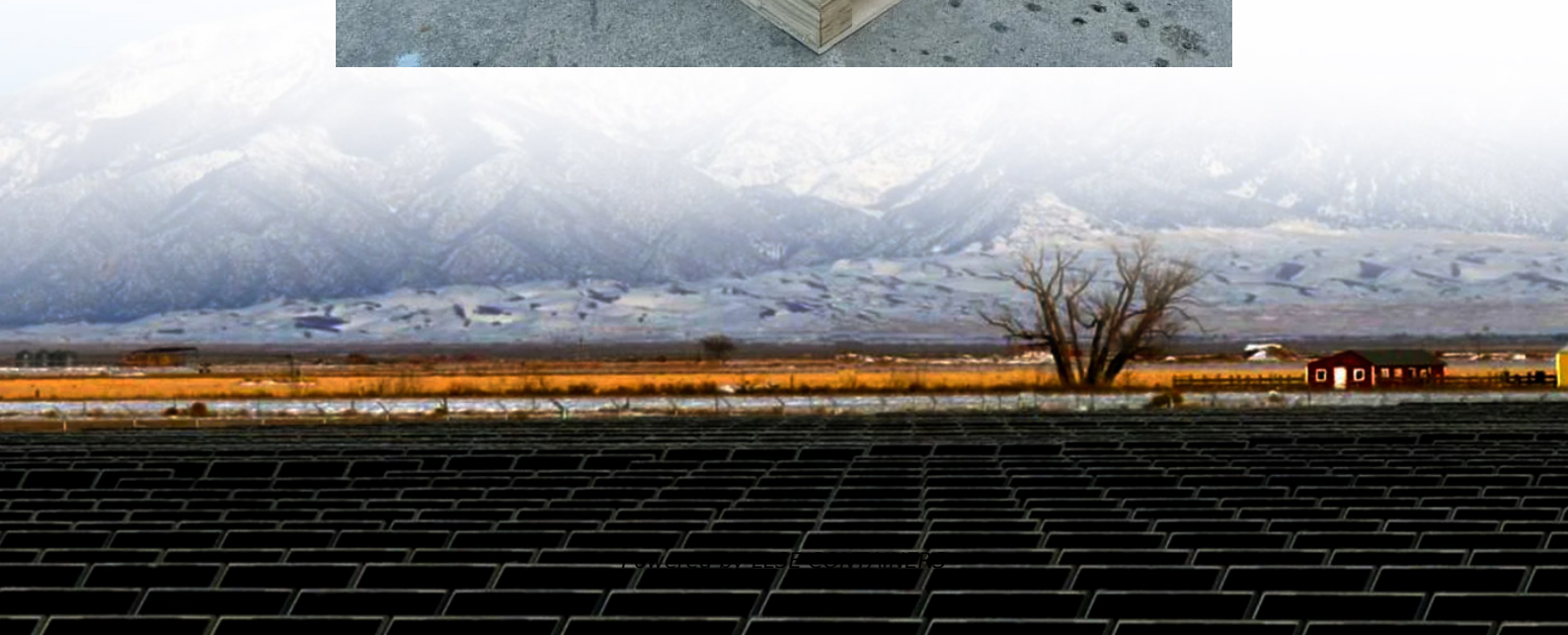


How big an inverter should I use for 60w5a





Overview

A 5 kW inverter is the most popular choice for residential installations, as it balances energy requirements and cost, accommodating around 12–15 panels or more if paired with a solar battery. Do I need an inverter size chart?

The need for an inverter size chart first became apparent when researching our DIY solar generator build. Solar generators range in size from small generators for short camping trips to large off-grid power systems for a boat or house. Consequently, inverter sizes vary greatly.

What size solar inverter do I Need?

The inverter should closely match your panel capacity (80-100% of the array size). For example, if you install a 6 kW solar PV system, you'll need a minimum 5 kVA inverter. When you install your solar system, your solar provider should discuss inverter options with you, as well as assess your system to determine which size inverter you need.

How do I choose the right solar inverter?

The best way to find the right-sized solar inverter is to consult with a trusted solar provider like Plico. We've been in the solar + battery game since 2019, so we know a thing or two about inverters. We'll guide you through the process, from choosing your system to installation and performance monitoring.

What is a recommended inverter power range?

By inputting your panel's rated power and number of panels, the calculator produces a recommended inverter power range that aligns with 80-100% of your system's total DC capacity. This approach ensures that your inverter is neither under-sized—risking energy losses and performance issues—nor over-sized, which can lead to unnecessary costs.



How big an inverter should I use for 60w5a



[How big an inverter should I use for a 300w solar panel](#)

Inverter Size Needed To Run A TV And Lights. Generally, a 300-watt inverter should be enough to run your TV and household lights. More specifically, a 300W inverter is big enough to run an ...

[What Size Inverter Do I Need ?A Complete Guide to ...](#)

Jun 12, 2025 · Discover how to select the perfect inverter size for your solar or backup power system. Learn to calculate power requirements, account for surge loads, match battery ...



[What Size Solar Inverter Do I Need?](#)

Feb 17, 2025 · The exact impact of your solar battery on inverter size depends on factors like battery capacity, inverter compatibility, and your specific energy usage patterns. It's best to ...

[How to Choose the Right Size Solar Inverter: Step-by-Step ...](#)

Jul 15, 2025 · Wondering what size solar inverter do I need for your solar system? This guide walks you through calculating inverter size based on panel capacity, power usage, and safety ...



[Inverter Size Chart: What Size Inverter Do I Need?](#)

Inverter Size Chart To help you quickly find your inverter size, I have created this easy-to-read inverter size chart. The watt rating of each appliance is a general average for you to compare ...



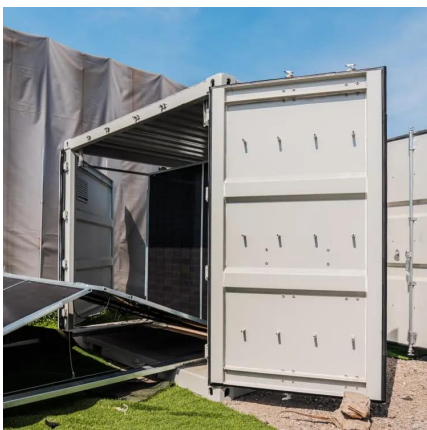
[The Only Inverter Size Chart You'll Ever Need](#)

Sep 25, 2023 · We created a comprehensive inverter size chart to help you select the correct inverter to power your appliances. The need for an inverter size chart first became apparent ...



[Solar Inverter Sizing Guide for Maximum Efficiency , Mingch](#)

Jun 27, 2025 · When choosing a solar inverter, size matters more than you might think. The right solar inverter sizing helps ensure your system performs efficiently, qualifies for incentives, and ...





How big an inverter should I use for solar panels

How big should a solar inverter be? You can size it between 1.15 and 1.5 times larger. The rule of thumb is to size your inverter 1.25 bigger than your solar array. In some cases, you may need ...



How big an inverter should I use for a 6kw solar panel

Most installations slightly oversize the inverter, with a ratio between 1.1-1.25 times the array capacity, to account for these considerations. The size of the solar inverter you need is directly ...

The Only Inverter Size Chart You'll Ever Need

How to Determine What Size Inverter I Need? What Are The Two Types of Power loads? Inverter Size Chart What Will A 300W Inverter Run? What Will A 500W Inverter Run? What Will A 700W Inverter Run? What Will A 1000W Inverter Run? What Will A 1500W Inverter Run? What Will A 2000W Inverter Run? What Will A 3000W Inverter Run? Before we go any further, we highly recommend that you choose a pure sine wave inverter. This type of inverter delivers high-quality electricity, similar to your utility company. This way, none of your appliances run the risk of being damaged. Now, when it comes to sizing your inverter, you always need to check your appliances' wattage and ensure t See more on climatebiz Solar Energy Scout

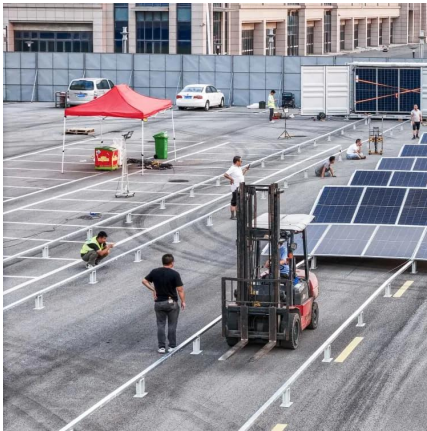


How To Size A Solar Inverter in 3 Easy Steps

What size solar inverter should you use for your



system? In this guide we share how to correctly size a solar inverter in 3 steps.



[Inverter Size Calculator - self2solar](#)

Feb 20, 2025 · Determining the Inverter Size to Match the Solar Panel Array Determining the correct inverter size depends on your solar array's capacity and your household's power ...

[How big an inverter should I use for a 10KW ...](#)

To calculate the ideal inverter size for your solar PV system, you should consider the total wattage of your solar panels and the specific conditions of your installation site. The general rule is to ...



[What Size Solar Inverter Do I Need? Experts Break It Down](#)

Jul 18, 2025 · Thinking about going solar? Great move. But before you start soaking up the sun, you'll need the right inverter to match your system. This guide breaks down what size solar ...

Contact Us

For catalog requests, pricing, or partnerships, please visit:
<https://llsolarenergy.co.za>



Scan QR Code for More Information



<https://llsolarenergy.co.za>