

How big an inverter should I use for 12v





Overview

What wattage Inverter should I use?

Match the inverter's continuous wattage rating to the battery's discharge capacity. For a 12V 200Ah battery (2.4kWh), a 2000W inverter is ideal. Formula: $\text{Inverter Wattage} \leq (\text{Battery Voltage} \times \text{Ah Rating} \times 0.8)$. Factor in surge power needs but prioritize sustained loads.

What size inverter for a 12V 200Ah battery?

For a 12V 200Ah battery (2.4kWh), a 2000W inverter is ideal. Formula: $\text{Inverter Wattage} \leq (\text{Battery Voltage} \times \text{Ah Rating} \times 0.8)$. Factor in surge power needs but prioritize sustained loads. Always check the battery's max discharge rate (C-rate) to avoid exceeding safe limits. When sizing for 24V or 48V systems, recalculate using the higher voltage.

What size inverter do I Need?

The inverter size calculator takes the guesswork out of choosing the right inverter. Simply select your appliances below, and you'll instantly see the inverter size you need. Standard 12v models top out around 3000w (24v/48v ~ 4000w). To proceed: Upgrade to a higher-voltage system (24 V/48 V) for a larger inverter.

What are the different solar inverter sizes?

Solar generators range in size from small generators for short camping trips to large off-grid power systems for a boat or house. Consequently, inverter sizes vary greatly. During our research, we discovered that most inverters range in size from 300 watts up to over 3000 watts. In this article, we guide you through the different inverter sizes.



How big an inverter should I use for 12v



[The Only Inverter Size Chart You'll Ever Need](#)

How to Determine What Size Inverter I Need? What Are The Two Types of Power loads? Inverter Size Chart What Will A 300W Inverter Run? What Will A 500W Inverter Run? What Will A 700W Inverter Run? What Will A 1000W Inverter Run? What Will A 1500W Inverter Run? What Will A 2000W Inverter Run? What Will A 3000W Inverter Run? Before we go any further, we highly recommend that you choose a pure sine wave inverter. This type of inverter delivers high-quality electricity, similar to your utility company. This way, none of your appliances run the risk of being damaged. Now, when it comes to sizing your inverter, you always need to check your appliances' wattage and ensure t See more on climatebiz topbullshop

How Big of an Inverter Can My Car Battery ...

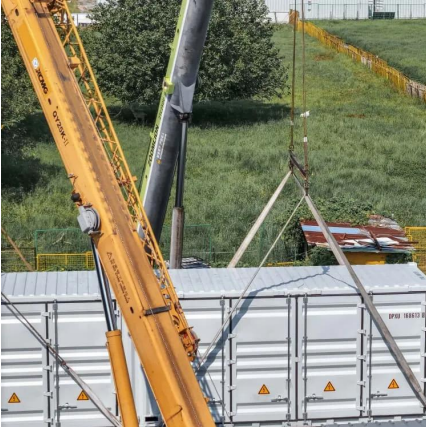
Mar 26, 2025 · Most cars use 12V batteries, some larger vehicles may use 24V batteries. This (kind of) voltage specification helps define the input ...

[What Size Inverter You Need \(Calculations + Battery\)](#)

Oct 6, 2022 · The size of the inverter required will be determined by the total wattage of the appliances you need to operate ...



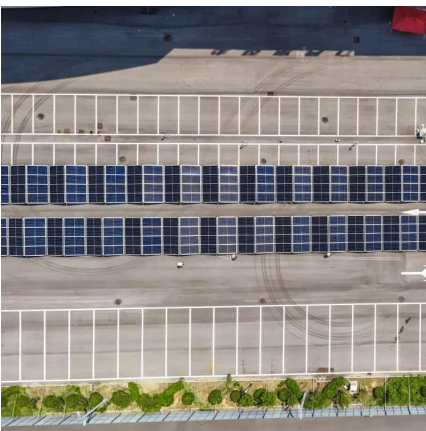
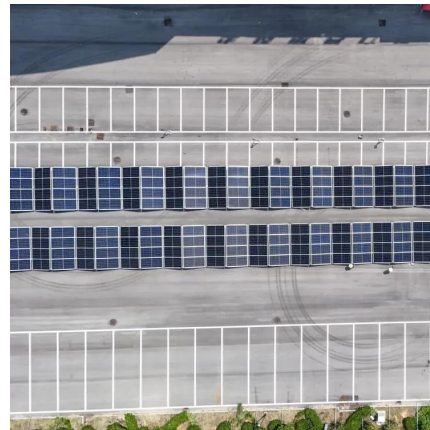
[Inverter Size Calculator , Find Your Perfect Power Match](#)



Apr 25, 2025 · Quickly size your campervan inverter. Add appliances, see min & max loads, and compare value vs premium options. Efficient, reliable, & easy.

What Size Inverter Do I Need

Feb 28, 2025 · What Factors Should I Consider When Selecting an Inverter? Your power consumption directly influences the size of the inverter you need. If your power consumption is ...

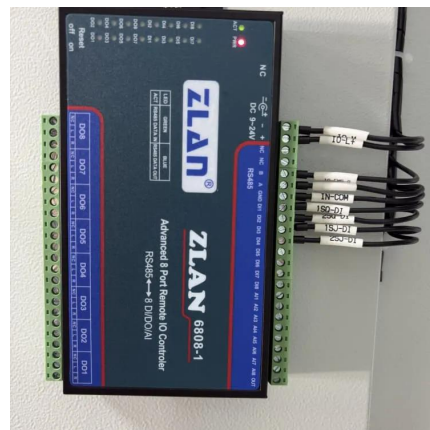


How Big of an Inverter Can My Car Battery Handle?

Mar 26, 2025 · Most cars use 12V batteries, some larger vehicles may use 24V batteries. This (kind of) voltage specification helps define the input requirements of the inverter. Battery ...

What Size Inverter Do I Need for a 12V 100Ah Battery?

Dec 19, 2023 · Use inverters with high-efficiency ratings. How Do Different Battery Types Affect Inverter Selection? Different battery types (lead-acid vs lithium) have varying discharge rates ...



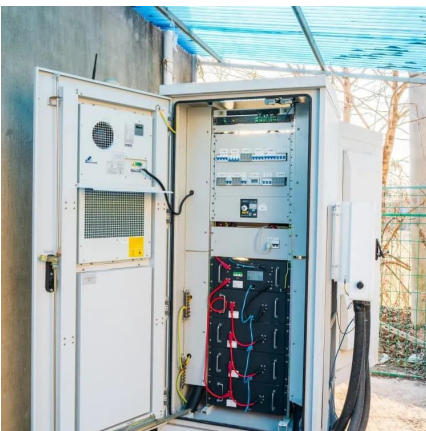
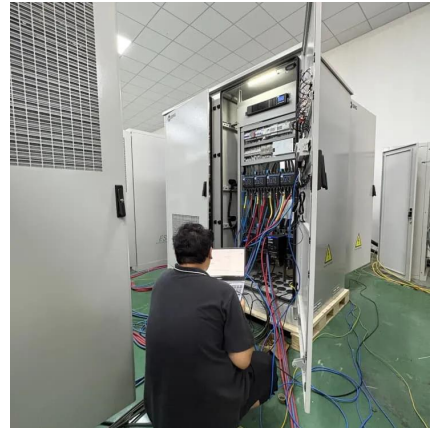


[The Only Inverter Size Chart You'll Ever Need](#)

Sep 25, 2023 · We created a comprehensive inverter size chart to help you select the correct inverter to power your appliances. The need for an inverter size chart first became apparent ...

[What size inverter can you run off a car battery?](#)

Aug 11, 2025 · A typical 12-volt car battery can safely support an inverter ranging from about 150 watts up to 600 watts for regular use without harming the battery. While it is technically ...



[Can an Inverter Be Too Big for Your Battery System?](#)

How to Calculate the Right Inverter Size for Your Battery Match the inverter's continuous wattage rating to the battery's discharge capacity. For a 12V 200Ah battery (2.4kWh), a 2000W inverter ...

[What Size Inverter You Need \(Calculations + Battery\)](#)

Oct 6, 2022 · The size of the inverter required will be determined by the total wattage of the appliances you need to operate and the time they need to run. You also need to add a bit ...





[What Size Inverter Do I Need](#)

Feb 28, 2025 · What Factors Should I Consider When Selecting an Inverter? Your power consumption directly influences the size of the inverter you ...

[How to Calculate the Right Inverter Size for Your Power Needs](#)

Future Needs: Choose a slightly larger inverter to accommodate future additions. Check Efficiency: High-efficiency inverters reduce energy loss and extend battery life. Ensure ...



[How Do You Choose the Right Inverter Size for Your Specific ...](#)

Oct 28, 2024 · To choose the right inverter size for your specific power needs, first calculate your total power requirements in watts. Multiply the battery capacity (in Ah) by its voltage (typically ...

Contact Us

For catalog requests, pricing, or partnerships, please visit:
<https://llsolarenergy.co.za>



Scan QR Code for More Information



<https://llsolarenergy.co.za>