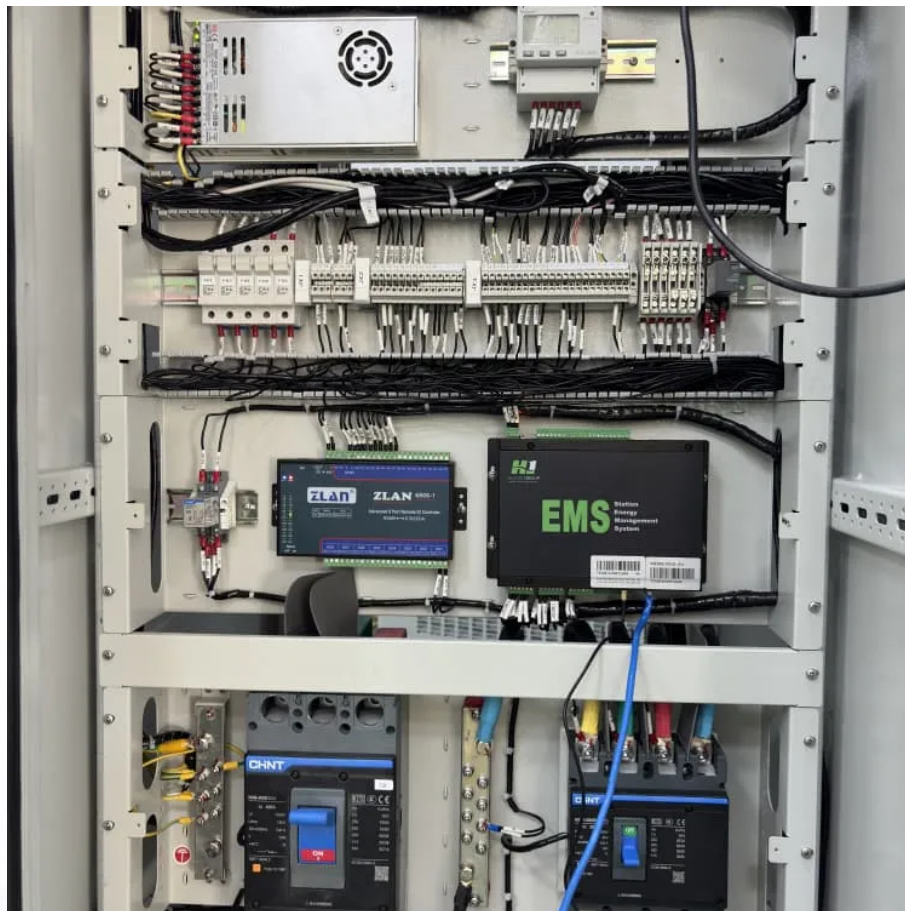


How big an inverter should I use for 12v150AH





Overview

Can a 150ah battery run an inverter?

150ah batteries are often used in off grid homes and RVs to run inverters. One of the things you have to do is make certain that the inverter is large enough, in this case for a 150ah battery. In this guide we will explain what capacity you will need. A 12V 150ah battery can store 1800 watts so a 2000 watt inverter is the right size.

How many Watts Does a 150 watt inverter hold?

A 12V 150ah battery can store 1800 watts so a 2000 watt inverter is the right size. A 24V 150ah battery holds up to 3600 watts, which means you should use a 4000 watt inverter. Inverter capacity is measured in watts. Battery sizes are measured in amp hours, so you need to find out how many watts a 150ah battery is.

What size inverter do I Need?

In this guide we will explain what capacity you will need. A 12V 150ah battery can store 1800 watts so a 2000 watt inverter is the right size. A 24V 150ah battery holds up to 3600 watts, which means you should use a 4000 watt inverter. Inverter capacity is measured in watts.

How many Watts Does a 150 watt inverter battery last?

Use this guide to check how many watts your appliances are. But for a 150ah battery, you will only use a limited number. Assuming it is a 12V battery and good for 1800 watts, you can load a laptop, a TV, several lights, a fan and a small microwave. You can load all these and the inverter battery should last an hour. This is just an example.



How big an inverter should I use for 12v150AH



[How to Choose the Right Inverter for a 12V 150Ah Battery](#)

Understanding Inverter Sizing for a 12V 150Ah Battery If you're using a 12V 150Ah battery, choosing the right inverter is critical to power your appliances safely. An inverter converts DC ...

[Calculate Battery Size for Inverter Calculator](#)

Mar 14, 2025 · The Calculate Battery Size for Inverter Calculator helps you determine the optimal battery capacity needed to support your inverter system. By inputting critical parameters such ...



[How Big of an Inverter Can My Car Battery Handle?](#)

Mar 26, 2025 · When considering connecting an inverter to your car battery, the first question we need to clarify is: how much power can your car battery actually support an inverter? Typically, ...



[The Only Inverter Size Chart You'll Ever Need](#)

Sep 25, 2023 · We created a comprehensive inverter size chart to help you select the correct inverter to power your appliances. The need for an inverter size chart first became apparent ...



[How Much Battery Capacity Do You Need With a 12V Inverter?](#)

Jun 14, 2025 · Discover how to calculate the ideal battery capacity for a 12V inverter using simple math, practical examples, and money-saving tips for daily power.

[How big an inverter should I use for 12v150AH](#)

Jun 10, 2025 · How many Watts Does a 150 watt inverter hold? A 12V 150ah battery can store 1800 watts so a 2000 watt inverter is the right size. A 24V 150ah battery holds up to 3600 ...



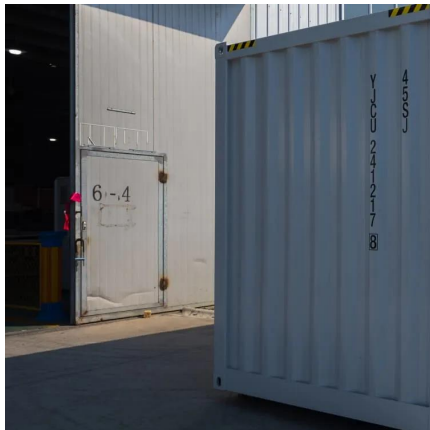
[What size inverter should I use for a 150a lithium battery](#)

Nov 23, 2025 · This is particularly true for lead acid. A 12V 150ah battery can store 1800 watts so a 2000 watt inverter is the right size. A 24V 150ah battery holds up to 3600 watts, which ...



[How Big of an Inverter Can My Car Battery ...](#)

Mar 26, 2025 · When considering connecting an inverter to your car battery, the first question we need to clarify is: how much power can your car ...



[Which inverter is best for 150ah battery?](#)

Dec 5, 2025 · The best inverter for a 150Ah battery is a pure sine wave 900VA-1500VA inverter, depending on your load requirements. For solar users or those planning to shift to solar later, a ...

[Calculate Battery Size for Inverter Calculator](#)

Mar 14, 2025 · The Calculate Battery Size for Inverter Calculator helps you determine the optimal battery capacity needed to support your inverter ...



[Inverter Capacity for 150ah Battery Guide](#)

A 12V 150ah battery can store 1800 watts so a 2000 watt inverter is the right size. A 24V 150ah battery holds up to 3600 watts, which means you should use a 4000 watt inverter.



Can an Inverter Be Too Big for Your Battery System?

FAQ Can I use a 3000W inverter with a 200Ah battery? Only if it's a 24V lithium system. For 12V lead-acid, $200\text{Ah} \times 12\text{V} \times 0.5\text{C} = 1200\text{W}$ max. How long will a 100Ah battery last with a 1000W ...



Contact Us

For catalog requests, pricing, or partnerships, please visit:
<https://llsolarenergy.co.za>

Scan QR Code for More Information



<https://llsolarenergy.co.za>