

How big an inverter can 12v30a drive





Overview

A typical 12-volt car battery can safely support an inverter ranging from about 150 watts up to 600 watts for regular use without harming the battery. What size inverter for a 12V 200Ah battery?

For a 12V 200Ah battery (2.4kWh), a 2000W inverter is ideal. Formula: Inverter Wattage \leq (Battery Voltage \times Ah Rating \times 0.8). Factor in surge power needs but prioritize sustained loads. Always check the battery's max discharge rate (C-rate) to avoid exceeding safe limits. When sizing for 24V or 48V systems, recalculate using the higher voltage.

How much inverter power can a car battery support?

There is a theoretical limit to the amount of inverter power that can be supported by an automotive battery. Theoretically, the maximum supported inverter power can be calculated by multiplying the battery capacity (Ah) by the battery voltage (V) multiplied by the discharge multiplier (C-rate).

Can a 12 volt car battery support a high power inverter?

Typically, a 12-volt car battery can support an inverter with a power range of about 150 watts to 1500 watts. Please note, however, that car batteries are not suitable for driving high power inverters for extended periods of time, which may cause damage to the battery.

What wattage Inverter should I use?

Match the inverter's continuous wattage rating to the battery's discharge capacity. For a 12V 200Ah battery (2.4kWh), a 2000W inverter is ideal. Formula: Inverter Wattage \leq (Battery Voltage \times Ah Rating \times 0.8). Factor in surge power needs but prioritize sustained loads.



How big an inverter can 12v30a drive



[How to Determine the Right Inverter Size For Your ...](#)

An inverter is a device that turns the power from a 12 volt DC battery, like the one in your car or truck, into the 120 volt AC power that runs all of the electronics in your house. You can use ...

[Inverter Capacity Calculator & Formula Online Calculator Ultra](#)

Oct 3, 2024 · Inverter capacity calculation is essential for selecting the right inverter that can handle the electrical load during power outages or off-grid conditions. By understanding the ...



[How Big of an Inverter Can My Car Battery Handle?](#)

Mar 26, 2025 · Calculating inverter demand sizing There is a theoretical limit to the amount of inverter power that can be supported by an automotive battery. Theoretically, the maximum ...



[The Only Inverter Size Chart You'll Ever Need](#)

Sep 25, 2023 · We created a comprehensive inverter size chart to help you select the correct inverter to power your appliances. The need for an inverter size chart first became apparent ...



[Can an Inverter Be Too Big for Your Battery System?](#)

How to Calculate the Right Inverter Size for Your Battery Match the inverter's continuous wattage rating to the battery's discharge capacity. For a 12V 200Ah battery (2.4kWh), a 2000W inverter ...



[How Big of an Inverter Can My Car Handle](#)

Jun 20, 2023 · Conclusion The size of the inverter that a car can handle is determined by the amount of power that the car's battery can provide. The typical 12 volt car battery can provide ...



[Is your inverter too big? Understanding the downsides of ...](#)

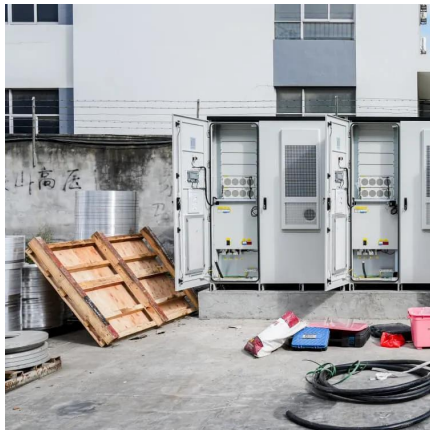
1 day ago · An overview of the hidden losses caused by oversized inverters and the role of monitoring in evaluating system efficiency and component matching.





[What size inverter can you run off a car battery?](#)

Aug 11, 2025 · A typical 12-volt car battery can safely support an inverter ranging from about 150 watts up to 600 watts for regular use without harming the battery. While it is technically ...



[How to size an inverter that can run your air ...](#)

Feb 10, 2024 · In this article, I'll explain in detail the main specifications to look at when shopping for an inverter that can run your air conditioner. I ...

[Inverter Size Calculator , Find Your Perfect Power Match](#)

Apr 25, 2025 · Inverters add load to the electrical system, even with no connected appliances. The larger the inverter, the greater the base load. So, it's a complete waste to install an ...



[How Big of an Inverter Can My Car Handle: Explained with ...](#)

Apr 1, 2023 · How Big of an Inverter Can My Car Handle: Understanding Your Car's Electrical System To determine the maximum size of an inverter that your car can handle, you need to ...



[The Only Inverter Size Chart You'll Ever Need](#)

How to Determine What Size Inverter I Need? What Are The Two Types of Power loads? Inverter Size Chart What Will A 300W Inverter Run? What Will A 500W Inverter Run? What Will A 700W Inverter Run? What Will A 1000W Inverter Run? What Will A 1500W Inverter Run? What Will A 2000W Inverter Run? What Will A 3000W Inverter Run? Before we go any further, we highly recommend that you choose a pure sine wave inverter. This type of inverter delivers high-quality electricity, similar to your utility company. This way, none of your appliances run the risk of being damaged. Now, when it comes to sizing your inverter, you always need to check your appliances' wattage and ensure t See more on climatebiz bettsun



How Much Battery Capacity Do You Need With a 12V Inverter?

Jun 14, 2025 · Discover how to calculate the ideal battery capacity for a 12V inverter using simple math, practical examples, and money-saving tips for daily power.



[How Much Battery Capacity Do You Need With a 12V Inverter?](#)

Jun 14, 2025 · Discover how to calculate the ideal battery capacity for a 12V inverter using simple math, practical examples, and money-saving tips for daily power.

Contact Us

For catalog requests, pricing, or partnerships, please visit:
<https://lsoleenergy.co.za>



Scan QR Code for More Information



<https://llsolarenergy.co.za>