

How big a battery should I use for a 45A inverter





Overview

For your 5kWh daily usage and 8 hours backup, you need a 180.5Ah 12V Lithium-ion battery. We recommend a 200Ah commercial size. What is the recommended battery size for an inverter?

Interpreting Results: Once you input the required data, the calculator will generate the recommended battery size in ampere-hours (Ah). For instance, if your power consumption is 500 watts, the usage time is 4 hours, and the inverter efficiency is 90%, the calculator might suggest a battery size of approximately 222 Ah.

Why should you use the calculate battery size for inverter calculator?

Using the Calculate Battery Size for Inverter Calculator can significantly streamline your power management process. This tool is particularly beneficial in scenarios where precise power estimation is critical, such as designing renewable energy systems, ensuring backup power in off-grid locations, or optimizing battery usage for cost efficiency.

How much battery should a 500 watt inverter use?

For instance, if your power consumption is 500 watts, the usage time is 4 hours, and the inverter efficiency is 90%, the calculator might suggest a battery size of approximately 222 Ah. **Practical Tips:** Ensure all input values are accurate to avoid skewed results.

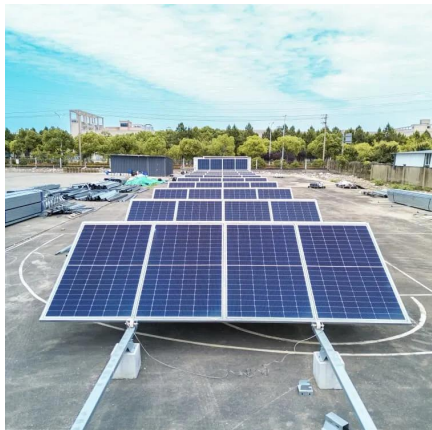
How many batteries in a solar inverter?

For example, if your required battery capacity is 20,000 Ah and you choose a battery with a capacity of 200 Ah, you would need $20,000 \text{ Ah} / 200 \text{ Ah} = 100$ batteries in your bank. **How to Calculate Your Solar Inverter Size?**

Inverters have two important power ratings: continuous power rating and peak power rating.



How big a battery should I use for a 45A inverter

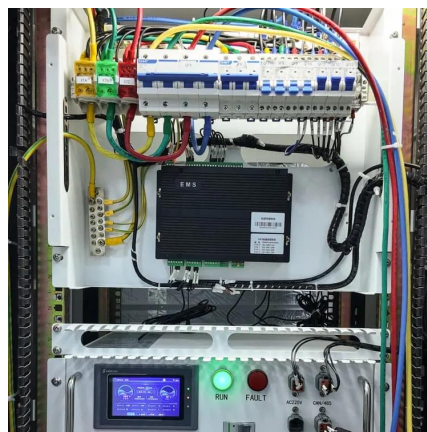


[What Size Inverter Do I Need for a 200AH Battery?](#)

Dec 15, 2023 · To determine the appropriate inverter size for a 200AH battery, you need to consider the total wattage of the devices you plan to power. A general rule is to choose an ...

[Battery to Inverter Calculator](#)

Jan 14, 2024 · Calculate the optimal battery size for your inverter with our battery to inverter calculator; find out the required battery capacity for your inverter with our battery power ...



[How Big of a Battery Do I Need to Run a 2000W Inverter?](#)

Dec 25, 2023 · To run a 2000W inverter, you typically need a battery with at least 200Ah capacity if you plan to run it for one hour. This calculation assumes a 100% efficiency rate, but in ...



[What size fuse between battery and inverter?](#)

Apr 22, 2024 · The amount of current (Amps) that you'd like the inverter to be able to pull from the battery. The amount of current that the wire between ...



[Calculate Battery Size for Inverter Calculator](#)

Mar 14, 2025 · The Calculate Battery Size for Inverter Calculator helps you determine the optimal battery capacity needed to support your inverter ...



[What Size Battery Do I Need to Run a 2000W Inverter?](#)

To run a 2000W inverter, you need to consider the appropriate battery size to ensure optimal performance and efficiency. Generally, for a 2000W inverter, a battery capacity of at least ...



[Calculate Battery Size for Inverter Calculator](#)

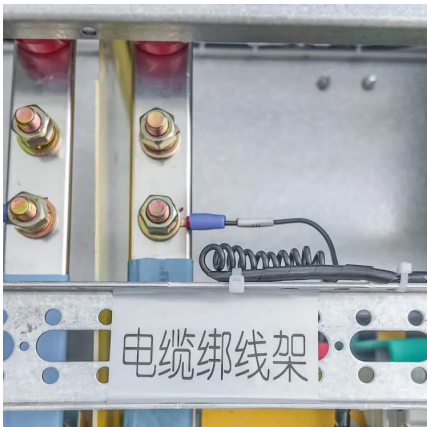
Mar 14, 2025 · The Calculate Battery Size for Inverter Calculator helps you determine the optimal battery capacity needed to support your inverter system. By inputting critical parameters such ...





[The Only Inverter Size Chart You'll Ever Need](#)

Sep 25, 2023 · We have created a comprehensive inverter size chart to help you select the correct inverter to power your ...



[How to Calculate Solar Panel, Battery, and ...](#)

Dec 28, 2023 · How to Calculate Your Solar Battery Bank Size? Determine how long you want your battery system to provide power during a grid ...

[How Many Batteries Do You Need for a ...](#)

Oct 29, 2024 · Guide to calculate how many batteries are needed for a 2000W inverter, ensuring optimal power supply for off-grid adventures ...



[Choosing and Sizing Batteries, Charge Controllers and Inverters ...](#)

If you are designing a solar electricity system and don't have access to the grid, you are going to have to deal with solar batteries. After having decided which type of battery to use, it will be ...



[How to Calculate the Right Inverter Battery Capacity for Your Needs](#)

Feb 24, 2025 · Learn how to calculate the right inverter battery capacity for your needs with a simple formula. Understand ...

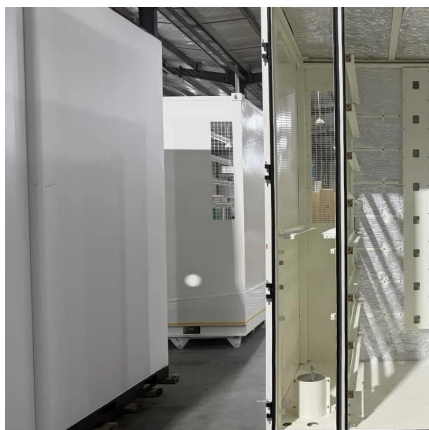


[Calculate Battery Size For Any Size Inverter \(Using Our ...](#)

Mar 3, 2023 · So I have made it easy for you, use the calculator below to calculate the battery size for 200 watt, 300 watt, 500 watt, 1000 watt, 2000 watt, 3000 watt, 5000-watt inverter

[What Will An Inverter Run & For How Long?](#)

Mar 3, 2023 · I saw on many forums that most people are confused about what they can run on their 1000,1500,2000,3000, & 5000-watt inverter ...



[How to Calculate Battery Size for Inverters of Any Size](#)

Learn how to calculate how much battery power you need to get your inverter up and running with The Inverter Store's handy how-to guide. It works for any size.



[Do I Need A Fuse Between Battery And ...](#)

Mar 21, 2024 · So, the answer to do I need a fuse between battery and inverter is yes, you sure do. First of all, the inverter will work only in ...



[Can an Inverter Be Too Big for Your Battery System?](#)

Why Battery Chemistry Matters in Inverter Sizing
Lithium-ion batteries tolerate higher discharge rates (up to 1C) compared to lead-acid (0.5C). A 100Ah LiFePO4 battery can safely power a ...

[How to Calculate the Right Battery Size for...](#)

Calculating the correct battery size ensures that your inverter system can meet your power needs without leaving you in the dark during outages.

...



[How Do I Match My Battery Size to My Inverter?](#)

Matching your battery size to your inverter is essential for ensuring efficient power usage and preventing system overloads. A well-sized battery will provide adequate energy for your ...



[How to Calculate the Right Battery Size for Your Inverter ...](#)

Calculating the correct battery size ensures that your inverter system can meet your power needs without leaving you in the dark during outages. An undersized battery may not provide enough ...



[What Size Solar Inverter Do I Need? Experts ...](#)

Jul 18, 2025 · Oversizing (up to 120%) helps if you plan to expand Consider sun exposure, energy use, and local utility rules Avoid guessing--use ...

[Best Battery Size Calculator For Solar And Off-Grid Systems](#)

Free battery size calculator - calculate the perfect battery capacity for your solar system, inverter, or car. Works with lithium-ion, lead-acid, and AGM batteries



[The Only Battery Size Chart You'll Ever Need](#)

Feb 26, 2022 · This article will help you understand the different battery sizes and provide you with a complete battery size chart.



[How to Calculate the Right Inverter Battery Capacity for Your ...](#)

Feb 24, 2025 · Learn how to calculate the right inverter battery capacity for your needs with a simple formula. Understand power requirements, efficiency losses, and the best battery types ...



[How to Calculate Solar Panel, Battery, and Inverter Size](#)

Dec 28, 2023 · How to Calculate Your Solar Battery Bank Size? Determine how long you want your battery system to provide power during a grid outage or periods of low sunlight. This ...

Contact Us

For catalog requests, pricing, or partnerships, please visit:
<https://llsolarenergy.co.za>

Scan QR Code for More Information



<https://llolarenergy.co.za>