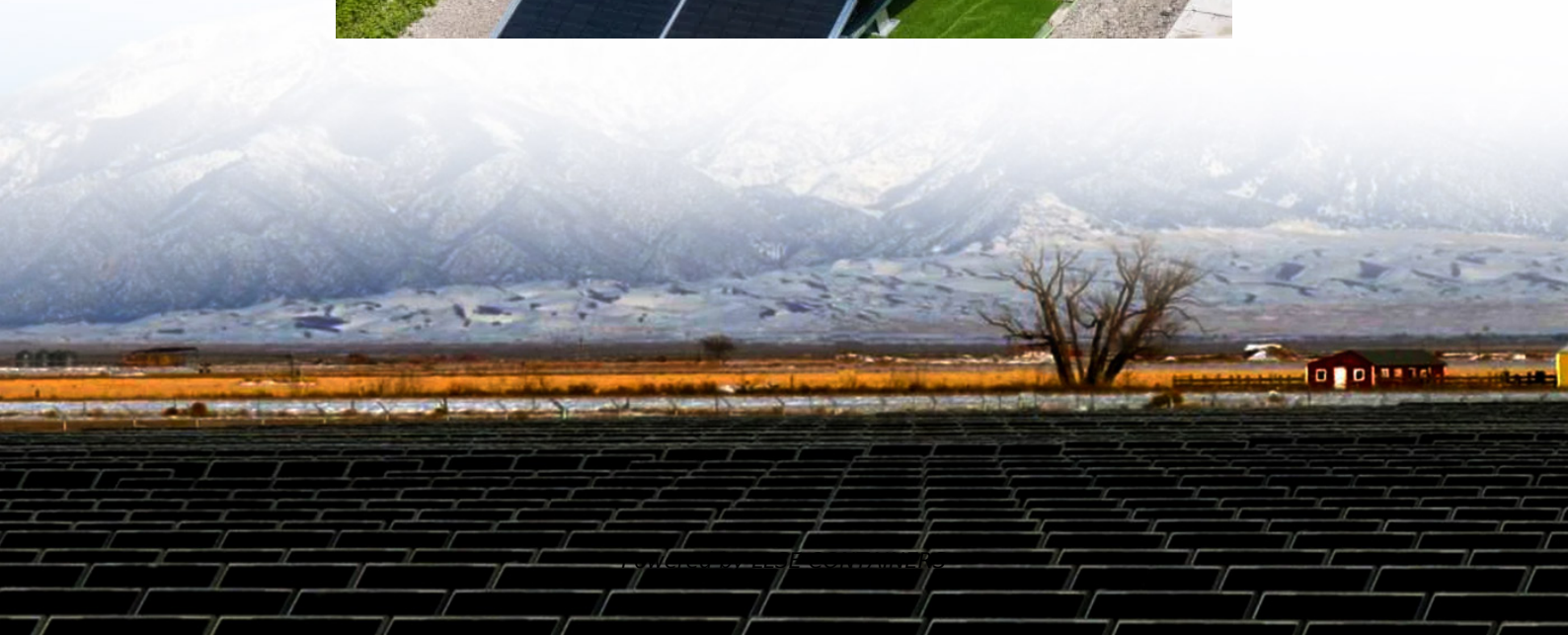


# Home inverter working time





## Overview

---

How long do solar inverters last?

Solar inverters don't last forever, and knowing their lifespan can save you from surprise breakdowns. On average, they'll serve you well for a decade or more. The key is understanding what affects their durability and how to extend it so your solar system runs smoothly for years. How Long Does a Solar Inverter Last?

.

How long can a 24V inverter run?

Regardless of the size, the calculation steps are always the same. Using this calculation, a 24V inverter with a 100ah battery and 93% efficiency can run a 500W load for 2.3 hours. You have a 24V inverter with a 150ah deep cycle battery. The inverter is 93% efficient. You want to run a 700 watt load, so how long can the inverter run this?

.

How do you calculate inverter usage time?

To calculate the usage time of an inverter, multiply the battery capacity by 12 (to convert Ah to Wh assuming a 12V battery), then multiply by the inverter efficiency, and finally divide by the load power. What is Inverter Usage Time?

Inverter usage time refers to the duration an inverter can supply power to a load before the battery is depleted.

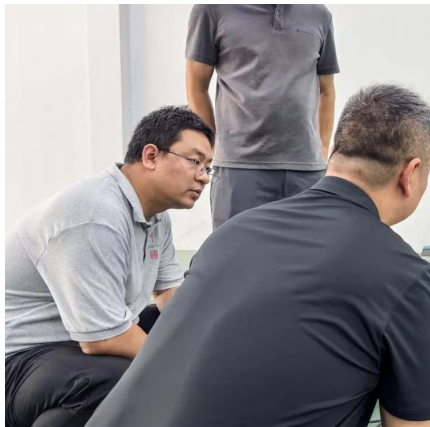
How do you calculate inverter runtime?

Divide the inverter watts by battery voltage to get the amps, then divide the amps by the inverter efficiency rating. Divide the result by the amps and you get the inverter runtime. An inverter draws its power from the battery so the battery capacity and power load determines how long the inverter will last.



## Home inverter working time

---

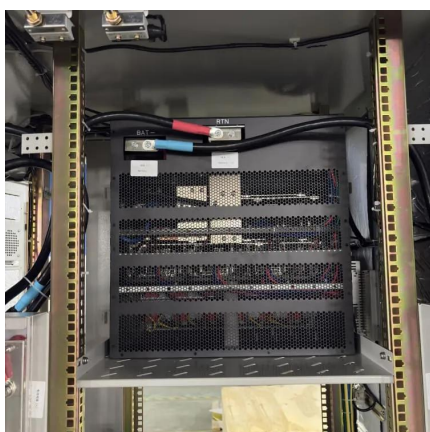


### [Inverter Run Time Calculator](#)

Mar 27, 2025 · Understanding how long your inverter will last during a power outage is essential for ensuring reliable backup power systems. This comprehensive guide explores the science ...

### [How Long Does an Inverter Last?](#)

Apr 23, 2025 · Overall, a good quality home inverter can work stably for 10~15 years, while a high load commercial system may need to be replaced between 5~10 years. The lifespan of ...



### **Inverter Usage Calculator**

Jan 10, 2024 · Enter the battery capacity, inverter efficiency, and load power into the calculator to determine the usage time of an inverter. This calculator helps to estimate how long an inverter ...

### [How Long Does a Solar Inverter Last? Here's the Truth](#)

Aug 22, 2025 · Solar inverters don't last forever, and knowing their lifespan can save you from surprise breakdowns. On average, they'll serve you well for a decade or more. The key is ...



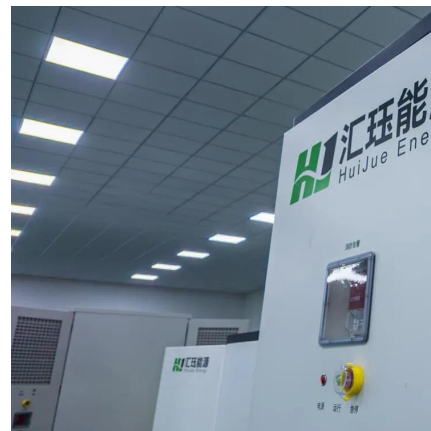


## [Understanding the Lifespan of Residential Inverters](#)

Jul 25, 2023 · Residential inverters have become an essential component of modern-day households, particularly for those who rely on solar power systems. They convert direct ...

## [How to Calculate How Long an Inverter Will Last](#)

How to Calculate How Long A Battery Will Last on An Inverter  
How Many Batteries Are Needed For My Inverter?  
What Inverter Size Do I Need?  
Inverter Frequently Asked Questions  
Conclusion  
How Do I Know if My Inverter is Working?  
Your inverter has an indicator light (usually green) to signify that it is running. If you connect a load to the inverter and it runs, then the inverter is drawing power from the battery and works.  
How Do I Know if the Battery is Full?  
All solar batteries have indicators or icons that will notify you when it is full. It might emit a sound, while others will simply refuse to accept any more power when it is full, so you can leave it connected to the power source without causing damage.  
See more on portablesolarexpert Senergy



## **Understanding the Lifespan of Residential ...**



Jul 25, 2023 · Residential inverters have become an essential component of modern-day households, particularly for those who rely on solar power ...

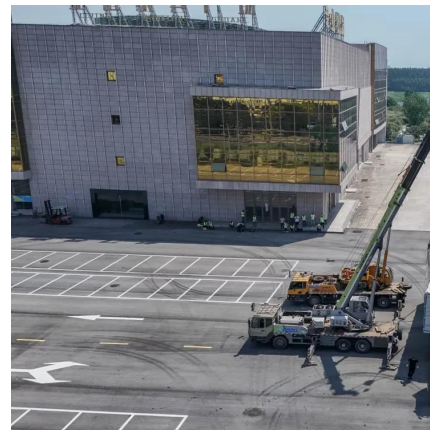


### [Inverter Runtime: Can It Run 24/7? Discover the Truth! -- ...](#)

May 21, 2024 · Curious if your inverter can run 24 hours a day? Find out the facts about inverter runtime, efficiency, and maintenance to keep it running smoothly without issues.

### [Should solar inverter be on all the time](#)

Sep 12, 2024 · A: Yes, your solar inverter should be on all the time to ensure that it can convert solar energy into usable electricity whenever there is sunlight. The inverter is responsible for ...



### [How Long Will My Inverter System Last in a Day? Here's](#)

Sep 13, 2024 · The type of inverter used in your solar energy system plays a significant role in determining how long the system can last on any given day. Inverters come in various types, ...



### [Residential Solar Inverter: Ultimate Guide for Homeowners](#)

Aug 27, 2025 · Discover everything about residential solar inverters: types, lifespan, sizing tips, and common issues to maximize your home solar system's efficiency.



## Contact Us

---

For catalog requests, pricing, or partnerships, please visit:  
<https://llsolarenergy.co.za>

## Scan QR Code for More Information



<https://llsolarenergy.co.za>