

Hindering the installation of wind and solar complementary equipment for solar container communication stations





Overview

Do wind and solar power plants need to be integrated?

Wind and solar power plants, like all new generation facilities, will need to be integrated into the electrical power system. This fact sheet addresses concerns about how power system adequacy, security, efficiency, and the ability to balance the generation (supply) and consumption (demand) are affected by wind and solar power production.

Does China have a potential for hydro-wind-solar complementary development?

China has made considerable efforts with respect to hydro- wind-solar complementary development. It has abundant resources of hydropower, wind power, and solar power and shows promising potential for future development.

How to optimize wind and solar energy integration?

The optimization uses a particle swarm algorithm to obtain wind and solar energy integration's optimal ratio and capacity configuration. The results indicate that a wind-solar ratio of around 1.25:1, with wind power installed capacity of 2350 MW and photovoltaic installed capacity of 1898 MW, results in maximum wind and solar installed capacity.

Do wind and solar power complement each other well?

It is clear that regardless of the wind and solar curtailment rate, the optimal installed capacity ratio is close to 1:1. This indicates that wind power and solar power complement each other well based on typical daily output data selected from the entire year, thereby demonstrating the necessity of simultaneous development of wind and solar power.



Hindering the installation of wind and solar complementary equipment



[Integrating Solar and Wind - Analysis](#)

Sep 18, 2024 · This report calls for strategic government action, enhanced infrastructure, and regulatory reforms to ensure the successful large-scale integration of solar PV and wind in ...

[WIND AND SOLAR COMPLEMENTARY SYSTEM ...](#)

Communication base station wind and solar hybrid energy storage cabinet photovoltaic Base station energy cabinet: a highly integrated and intelligent hybrid power system that combines ...



[An in-depth study of the principles and technologies of wind-solar](#)

Jul 26, 2024 · The wind-solar hybrid system combines two renewable energy sources, wind and solar, and utilizes their complementary nature in time and space in order to improve the ...



[Design of Off-Grid Wind-Solar Complementary Power ...](#)

Feb 29, 2024 · In remote areas far from the power grid, such as border guard posts, islands, mountain weather stations, communication base stations, and other places, wind power and ...



[Matching Optimization of Wind-Solar Complementary Power ...](#)

Sep 23, 2024 · The intermittency, randomness and volatility of wind power and photovoltaic power generation bring trouble to power system planning. The capacity configuration of integrated ...



[Optimal Design of Wind-Solar complementary power ...](#)

Dec 15, 2024 · The results indicate that a wind-solar ratio of around 1.25:1, with wind power installed capacity of 2350 MW and photovoltaic installed capacity of 1898 MW, results in ...



[Assessing complementarity of wind and solar resources for ...](#)

Mar 1, 2014 · In such a system wind and solar electricity production profiles should complement each other as much as possible in order to minimise the need of storage and additional ...





Overview of hydro-wind-solar power complementary development in China

Aug 1, 2019 · China has made considerable efforts with respect to hydro- wind-solar complementary development. It has abundant resources of hydropower, wind power, and solar ...



[Integrating solar and wind energy into the electricity grid for](#)

Jan 1, 2025 · This study aims to explore the concept of community grid support through solar and wind hybrid systems as a sustainable energy solution. Advantages of combining solar and ...

[Strategies for climate-resilient global wind and solar power ...](#)

Jun 18, 2025 · Climate-intensified supply-demand imbalances may raise hourly costs of wind and solar power systems, but well-designed climate-resilient strategies can provide help.



[Regulations on the Installation of Wind-Solar Complementary ...](#)

A communication base station, wind-solar complementary technology, applied in the field of new energy communication, can solve the problems of inconvenience, inability to utilize wind



[Emerging Issues and Challenges in Integrating of Solar and Wind](#)

Nov 12, 2024 · The anticipated expansion of renewable energy, particularly solar and wind power, is reshaping the landscape of global power systems. This article explores emerging issues and ...

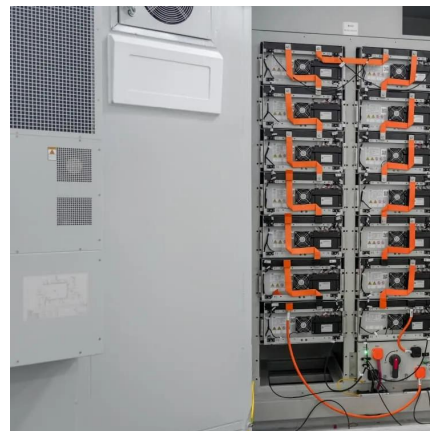


[Optimization study of wind, solar, hydro and hydrogen ...](#)

Jul 15, 2024 · Consequently, this article, targeting the current status of multi-energy complementarity, establishes a complementary system of pumped hydro storage, battery ...

[WIND AND SOLAR INTEGRATION ISSUES](#)

Feb 21, 2025 · WIND AND SOLAR INTEGRATION ISSUES Wind and solar power plants, like all new generation facilities, will need to be integrated into the electrical power system. This fact ...



[Exploring complementary effects of solar and wind power ...](#)

Mar 1, 2025 · Given the above, this work aims to contribute to the theme in question - namely, simulation of renewable energies - by proposing a methodology to simulate joint scenarios for ...



[Application of photovoltaics on different types of land in ...](#)

Mar 1, 2024 · Several studies emphasize the "PV+" model, which integrates solar energy with various sectors such as agriculture, fisheries, pastoralism, forestry, and wind power. Gillianne ...



Contact Us

For catalog requests, pricing, or partnerships, please visit:
<https://llsolarenergy.co.za>

Scan QR Code for More Information



<https://llsolarenergy.co.za>