

Finished solar container lithium battery pack parallel connection





Overview

How to connect lithium solar batteries in parallel?

Connecting Lithium Solar Batteries in Parallel: When connecting batteries in parallel, the positive terminals are connected together, and the negative terminals are connected together. The ampere-hour capacity of the individual batteries adds up, while the total voltage remains the same as the individual batteries.

How to connect lithium solar batteries in series?

Connecting Lithium Solar Batteries in Series: To connect lithium solar batteries in series, you simply link the negative pole of one battery to the positive pole of the next battery. This ensures that the same current flows through all the batteries. The total voltage of the series connection is the sum of the individual voltages.

Why do solar batteries need parallel connections?

Parallel connections allow for a more even discharge of batteries, which can enhance the lifespan of each unit by preventing over-discharge in any single battery. Understanding these elements of solar batteries equips you with the knowledge to optimize your solar energy system effectively.

What is the purpose of connecting lithium solar batteries in series?

The main purpose of connecting lithium solar batteries in series is to increase the output voltage. By adding up the voltages of the individual batteries, you can power devices that require higher voltage amounts. For example, connecting two 24V 100Ah batteries in series will result in a combined voltage of 48V while maintaining the same capacity.



Finished solar container lithium battery pack parallel connection



[How to Connect Lithium Solar Batteries in ...](#)

May 5, 2024 · Connecting lithium solar batteries in series or parallel is essential for customizing energy storage systems. In a series connection, ...

[Can I parallel multiple Lithium Battery Packs?](#)

May 27, 2025 · A lithium battery pack consists of multiple individual lithium cells connected in series and/or parallel to achieve the desired voltage ...



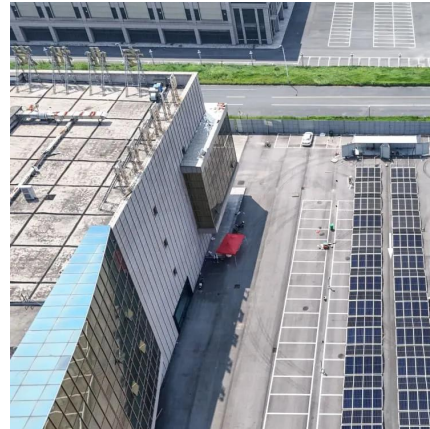
[Paralleling Lithium Batteries in Solar Systems: Principles, ...](#)

Sep 15, 2025 · Solar power generation relies on sunlight, with peak power generation during the day and zero power generation at night. This requires lithium batteries to store sufficient ...



[How to Balance Lithium Batteries with Parallel BMS?](#)

Sep 1, 2023 · A parallel BMS regulates the current flow between 2 or multiple batteries connected in parallel, learn how it works and how to connect it.



[Lithium Solar Batteries Series vs Parallel ...](#)

Apr 27, 2025 · Lithium solar batteries are essential components of solar energy systems, providing reliable energy storage for various ...



[BATTERY SERIES AND PARALLEL CONNECTION CALCULATOR](#)

48V lithium battery pack in parallel Safely paralleling 48V batteries requires identical voltage, chemistry, and state of charge (SoC). Mismatched parameters trigger cross-currents, ...



[Can I parallel multiple Lithium Battery Packs?](#)

May 27, 2025 · A lithium battery pack consists of multiple individual lithium cells connected in series and/or parallel to achieve the desired voltage and capacity. When cells are connected in ...





[How to Connect Solar Batteries in Parallel for Maximum ...](#)

Oct 26, 2024 · Unlock the full potential of your solar energy system by learning how to connect solar batteries in parallel. This comprehensive guide explores the benefits of increased ...



[Lithium Series, Parallel and Series and Parallel](#)

Mar 23, 2021 · Lithium Series, Parallel and Series and Parallel Connections Introduction Lithium battery banks using batteries with built-in Battery Management Systems (BMS) are created by ...

[How to Connect Lithium Solar Batteries in Series & Parallel](#)

May 5, 2024 · Connecting lithium solar batteries in series or parallel is essential for customizing energy storage systems. In a series connection, the voltage increases while the capacity ...



[Lithium Solar Batteries Series vs Parallel Connection](#)

Apr 27, 2025 · Lithium solar batteries are essential components of solar energy systems, providing reliable energy storage for various applications. Understanding how to connect these ...



Management of imbalances in parallel-connected lithium-ion battery packs

Aug 1, 2019 · Uneven electrical current distribution in a parallel-connected lithium-ion battery pack can result in different degradation rates and overcurrent issues in the cells. Understanding the ...



[How to Connect Solar Batteries in Parallel for ...](#)

Oct 26, 2024 · Unlock the full potential of your solar energy system by learning how to connect solar batteries in parallel. This comprehensive ...

[Batteries in Series vs Parallel: Understand The Differences](#)

Nov 18, 2025 · Batteries in series vs parallel--it's a topic that confuses many DIY enthusiasts and even some professionals. Of course, this is one of the questions the BSLBATT team is often ...



[How to Balance Lithium Batteries with Parallel ...](#)

Sep 1, 2023 · A parallel BMS regulates the current flow between 2 or multiple batteries connected in parallel, learn how it works and how to connect it.



Contact Us

For catalog requests, pricing, or partnerships, please visit:
<https://llsolarenergy.co.za>

Scan QR Code for More Information



<https://llsolarenergy.co.za>