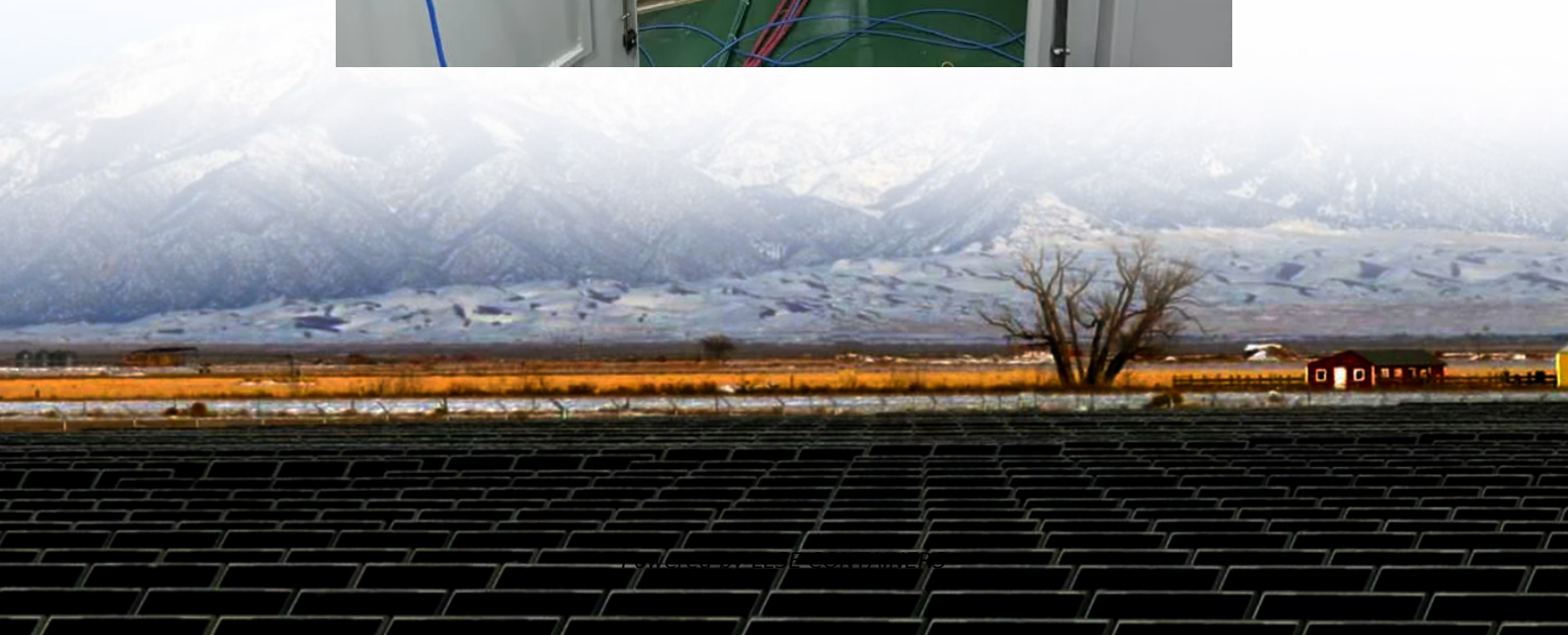


Factory price bus tie breaker in France





Overview

What is a bus tie breaker?

A Bus Tie Breaker is an essential device used in electrical systems to connect or isolate individual sections of a switchboard. In maritime and offshore operations, particularly in vessels equipped with Dynamic Positioning (DP) systems, bus tie breakers play a critical role in ensuring power distribution reliability and flexibility.

How many bus tie breaker controllers can a Deif power management system include?

A DEIF power management system can include as many Bus tie breaker controllers as necessary. Part of the versatile PPM 300 range The PPM 300 Bus tie breaker controller is part of the DEIF PPM 300 range of versatile controllers with built-in multi-master power management features.

What is a tie breaker?

A tie breaker is a type of circuit breaker that connects two sections of an electrical bus serving different power sources. They are commonly used to connect electrical systems to power sources and load circuits, as well as to protect people and equipment from overcurrents. In the context of maintenance, tie breakers offer significant advantages.

What is a bus tie switchgear?

Product Overview□The Bus Tie Switchgear is a critical component in medium-voltage (MV) power distribution systems, designed to interconnect and isolate multiple busbar sections. Rated for 10KV (IEC) to 15KV (ANSI) applications, it ensures load balancing, enhanced power continuity, and rapid system reconfiguration during faults or maintenance.



Factory price bus tie breaker in France



[Understanding Bus Tie Breakers: Functionality And Practical](#)

2 days ago · Learn about bus tie breakers, their functionality, and how they're used in electrical systems to connect and isolate bus sections, enhance reliability, and facilitate maintenance ...

[QUALITY SWITCHGEARS Manufacturing & Engineering Services](#)

Aug 12, 2022 · Sheet Steel fabricated low voltage Bus Tie Duct system in air-insulated, non segregated construction. Our Bus Ducts are designed to meet the required voltage, ampere ...

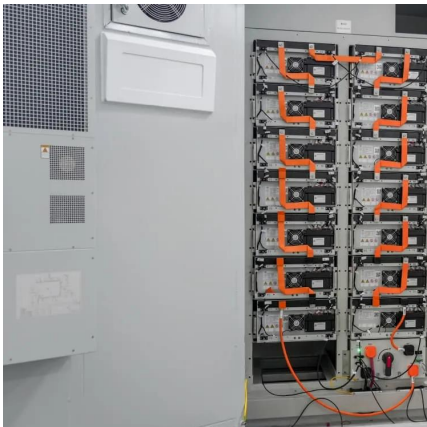
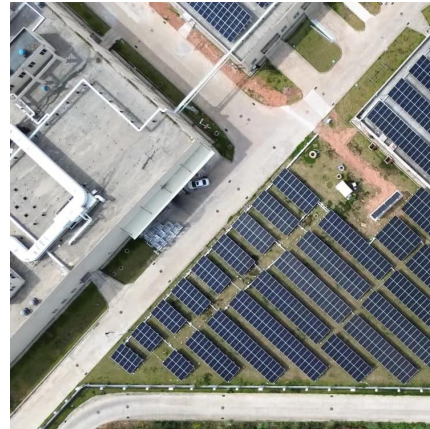


[15KV & 11KV & 12KV & 10KV Bus Tie Switchgear](#)

Nov 25, 2025 · Top 10KV, 11KV, 12KV & 15KV Bus Tie Switchgear Manufacturers - Reliable, Custom Solutions for Power Distribution. Get Competitive Pricing & Technical Support .

[Solid-State Bus Tie Breaker Market Research Report 2033](#)

According to our latest research, the global Solid-State Bus Tie Breaker market size in 2024 stands at USD 1.21 billion, driven by the robust adoption of advanced power management ...



Bus Tie Breaker: A Key Component in Electrical Power ...

A Bus Tie Breaker is an essential device used in electrical systems to connect or isolate individual sections of a switchboard. In maritime and offshore operations, particularly in vessels ...

Promoting more robust DP power systems with closed bus-ties ...

Mar 6, 2024 · The use of closed bus-ties for dynamic positioning power systems can yield significant benefits for the decarbonization and digitalization of the offshore and shipping ...



Contact Us

For catalog requests, pricing, or partnerships, please visit:
<https://llsolarenergy.co.za>



Scan QR Code for More Information



<https://llsolarenergy.co.za>