

Electric Power Sine Wave Inverter Production





Overview

How does a sine wave inverter work?

They convert direct current (DC) energy, such as that sourced from solar panels or batteries, into alternating current (AC) energy, the type used in most residential and commercial settings. A sine wave inverter operates by transforming a DC input into an AC output that closely mimics the pure sine wave of traditional power grid electricity.

What is a pure sine wave inverter?

Modern pure sine wave inverters are sophisticated electronic devices that play a crucial role in any solar power system. Their output power is much higher quality than modified sine wave inverters. The basic function of an inverter is to convert DC power output from the solar array into AC power output that we can use in our homes and businesses.

What is a modified sine wave inverter?

Modified sine wave inverters use simpler and cheaper electronics to produce a wave that is not quite a smooth sine wave. Pure sine wave inverters use more expensive electronics to generate a wave that is very close to a pure sine wave. The figure below compares outputs from a modified sine waver inverter and a pure sine wave inverter.

What voltage does a sine wave inverter use?

Input Voltage: This must match the voltage of your DC power source. Common values are 12V, 24V, or 48V. In conclusion, sine wave inverters play a crucial role in converting DC power from sources like batteries or solar panels into the AC power that most of our appliances and devices need.



Electric Power Sine Wave Inverter Production



[How Does A Pure Sine Wave Inverter Work?](#)

Oct 9, 2024 · Inverters are a critical part of any solar power system. We delve into inverter technology, in particular pure sine wave inverters, and learn why they are so important.

[How Inverter Generators Work , Pure Sine Wave Power ...](#)

Nov 24, 2025 · Learn how inverter generators work through a simple three-stage process that delivers clean, quiet, and efficient power. Understand pure sine wave output and low THD ...



[How Does a Pure Sine Wave Inverter Work? A ...](#)

4 days ago · A pure sine wave AC signal oscillates smoothly in a symmetrical, curved pattern, with voltage rising from 0 to a positive peak, falling back to 0, dropping to a negative peak, and ...

[Pure Sine Wave Inverter: Clean Power Guide 2025](#)

Apr 21, 2025 · A pure sine wave inverter is an advanced power conversion device that transforms direct current (DC) electricity typically sourced from batteries, solar panels, or



other off-grid ...

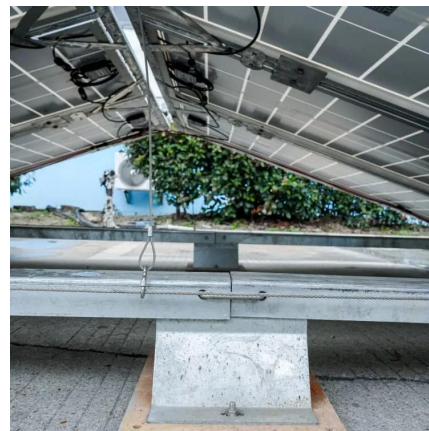


? What is a Pure Sine Wave Inverter and Why Does it Matter?

Jun 9, 2025 · Electricity that comes from the power grid is in the form of a sine wave--a smooth, repeating wave that maintains a consistent frequency (usually 50 or 60 Hz). A pure sine wave ...

How Does A Pure Sine Wave Inverter Work?

Inverters in Renewable Energy DC Power vs AC Power
Converting DC Power to AC Power
Sine Wave Inverters
Pure Sine Wave vs Modified Sine Wave Inverters
Modern Inverters For Solar Arrays
Power Quality
Conclusion
Sine wave inverters are available in two basic types: pure sine wave inverters and modified sine wave inverters. The difference is basically in the electronics. Modified sine wave inverters use simpler and cheaper electronics to produce a wave that is not quite a smooth sine wave. Pure sine wave inverters use more expensive electronics to generate See more on todayshomeowner Microcontrollers Lab



Pure Sine Wave Inverter A-Z , Theory , Types

A pure sine wave inverter is an electronic device that converts direct current (DC) electricity, typically from a battery or a solar panel, into



alternating ...



[Design of Pure sine wave inverter](#)

May 8, 2024 · 1. INTRODUCTION: This project focuses on dc to ac power inverter which aim to efficiently transform a dc power source to high voltage source like power that would be ...

[Sine Wave Inverters - Electricity - Magnetism](#)

Oct 26, 2023 · A sine wave inverter operates by transforming a DC input into an AC output that closely mimics the pure sine wave of traditional power grid electricity. This smooth, ...



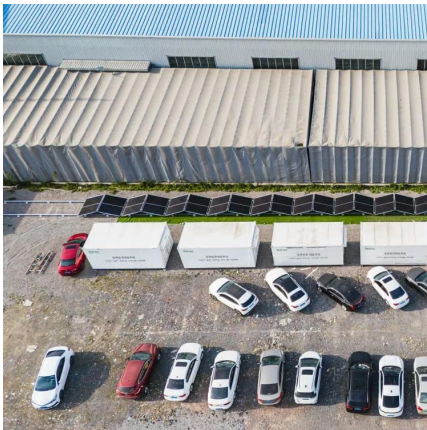
[Pure Sine Wave Inverter: A Comprehensive Guide to Electrical Power](#)

A pure sine wave inverter is an electronic device that converts DC power, typically sourced from batteries or solar panels, into high-quality AC power with a waveform that mimics the smooth ...



[Pure Sine Wave Inverter A-Z , Theory , Types , Working](#)

A pure sine wave inverter is an electronic device that converts direct current (DC) electricity, typically from a battery or a solar panel, into alternating current (AC) electricity with a ...



[What Is a Pure Sine Wave Inverter and How Does It Work?](#)

Jun 24, 2025 · A pure sine wave inverter is a specialty device that transforms direct current (DC) electricity from sources like batteries or solar panels into alternating current (AC) electricity, ...

Contact Us

For catalog requests, pricing, or partnerships, please visit:
<https://llsolarenergy.co.za>

Scan QR Code for More Information



<https://llsolarenergy.co.za>