

# Double-glass bifacial module warranty





## Double-glass bifacial module warranty

---

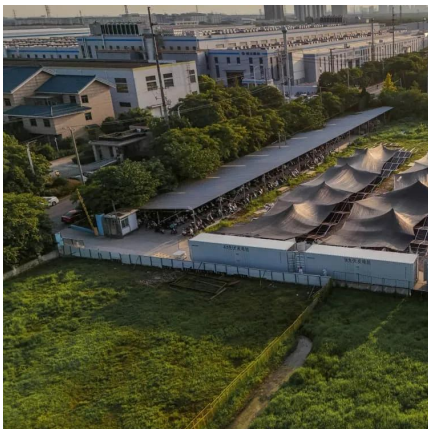


[DM445-465M10RT-B54HSW-HBW-20240513-EN](#)

May 30, 2024 · Statement: The installation instructions and the warranty conditions must be followed. Due to technological progress, product parameters will be adjusted ...

### Double Glass Bifacial

Sep 4, 2025 · N-Type 72 Half Cell Bifacial Module With Dual Glass SN (560~590W)-144MTB-Double Glass Bifacial 12 Years Product Warranty 30 Years Linear power output warranty ...



### Bi-facial Double Glass

Feb 22, 2023 · Our innovations are designed and engineered in Singapore. Among our product portfolio is the High-Power Density low-glare module (GMD series), 3-in-1 Building-Integrated ...

[Vertex\\_NFG21C.20\\_EN\\_2024\\_APAC\\_A\\_web](#)

Mar 2, 2024 · Trina Solar's Vertex Bifacial Dual Glass Performance Warranty 100% 99.0% 90% 87.4% Years 5 10 15 20 25 30 Comprehensive Products and System Certi



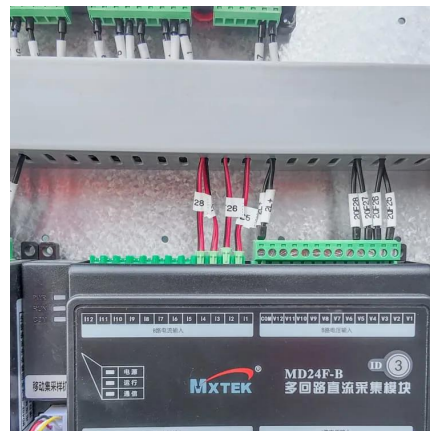
### [Raytech Double-Glass Modules , Bifacial Solar ...](#)

Mar 12, 2024 · Raytech as a manufacturer and supplier of high-quality double glass solar panel, solar module, and solar panel, provide you with high ...



### **Raytech Double-Glass Modules , Bifacial Solar Modules , Raytech Double**

Mar 12, 2024 · Raytech as a manufacturer and supplier of high-quality double glass solar panel, solar module, and solar panel, provide you with high-quality products and solar module ...



### **Bifacial Warranty**

Sep 4, 2025 · SEG provides a Limited Product guarantee for its modules. The "Limited Product Warranty Period" starting on the earlier of (i) the date of delivery of the Module or (ii) 180 days ...







### [EVO 6R 600-625W N Type TOPCon Bifacial Double-glass ...](#)

Jun 8, 2024 · Bifacial with Double-Glass Module adopts 182\*210mm half cells, bifacial module provide an additional 5%~25% output.



### [SoleFiori HJT bifacial double glass module](#)

SoleFiori HJT bifacial double glass module 132 version-heterojunction 210mm cell  
Power:695~740W Efficiency:23.18% Bifaciality rate: up to 95% Low attenuation: 1% ...

### [A.1\[2023\]\\_Risen\\_Limited Warranty for p-type Dual...](#)

Oct 17, 2025 · Revision: A3[2025] The warranties described in this limited warranty (such warranties being referred to collectively as this "Warranty") cover SPV MODULE(s) as below ...



## Contact Us

For catalog requests, pricing, or partnerships, please visit:  
<https://lsolarenergy.co.za>



## Scan QR Code for More Information



<https://llsolarenergy.co.za>