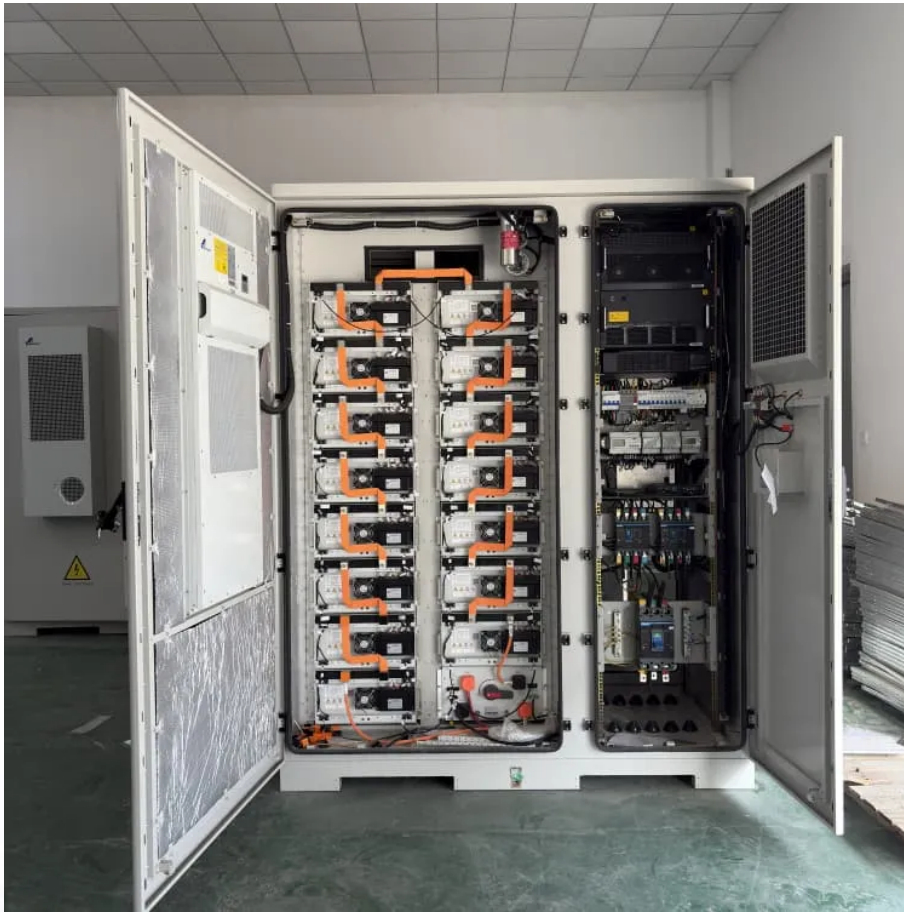


Does the 5G base station need to use AC power





Overview

Are 5G base stations causing more energy consumption?

However, Li says 5G base stations are carrying five times the traffic as when equipped with only 4G, pushing up power consumption. The carrier is seeking subsidies from the Chinese government to help with the increased energy usage.

Will 5G use micro-cells?

Therefore, in 5G networks, high-frequency resources will no longer use macro base stations, micro-cells become the mainstream, and the small base stations will be used as the basic unit for ultra-intensive networking, that is, small base stations dense deployment.

Does China Mobile have a 5G base station?

China Mobile has tried using lower cost deployments of MIMO antennas, specifically 32T32R and sometimes 8T8R rather than 64T64R, according to MTN. However, Li says 5G base stations are carrying five times the traffic as when equipped with only 4G, pushing up power consumption.

What is the difference between 4G and 5G?

According to the principle of mobile communication, the transmission distance and frequency of the signal are inversely proportional when the power ratio of receiving and transmitting is constant. The frequencies of 4G base stations are generally from 2.3GHz to 2.6GHz, and the frequencies of 5G high-frequency base stations are above 28GHz.



Does the 5G base station need to use AC power



[Building better power supplies for 5G base stations](#)

May 25, 2025 · Building better power supplies for 5G base stations Authored by: Alessandro Pevere, and Francesco Di Domenico, both at Infineon Technologies Infineon Technologies - ...

[5G base stations use a lot more energy than 4G base stations...](#)

Apr 3, 2020 · Exact estimates differ by source, but MTN says the industry consensus is that 5G will double to triple energy consumption for mobile operators, once networks scale. Warnings ...



[What are the challenges of power supply design in the 5G ...](#)

Oct 24, 2024 · Usually, the power supply of the base station is mainly divided into three levels. Generally speaking, the power supply of the base station is 220V AC.

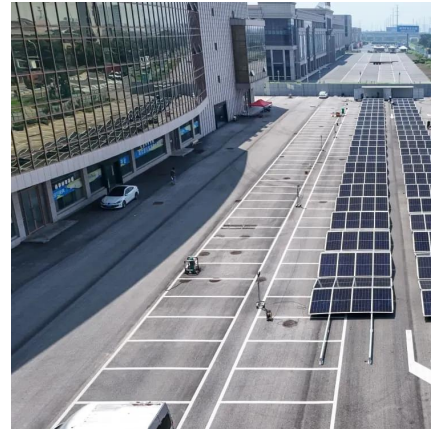


[Why does 5g base station consume so much power and how ...](#)

Apr 3, 2025 · 5G base stations use high power consumption and high RF signals, which require more signal processing for digital and electromechanical units, and also put greater



pressure ...



[Complete Guide to 5G Base Station Construction , Key Steps, ...](#)

Nov 17, 2024 · Explore how 5G base stations are built--from site planning and cabinet installation to power systems and cooling solutions. Learn the essential components, technologies, and ...



[Selecting the Right Supplies for Powering 5G Base Stations](#)

Additionally, these 5G cells will also include more integrated antennas to apply the massive multiple input, multiple output (MIMO) techniques for reliable connections. As a result, a ...



[5G infrastructure power supply design considerations \(Part II\)](#)

May 10, 2021 · Currently, power supply solutions deliver sufficient power to keep 4G core nodes operating. However, they may not be sufficient for 5G. Data show, for instance, that the ...





[Study on Power Feeding System for 5G Network](#)

Oct 24, 2019 · Therefore, in 5G networks, high-frequency resources will no longer use macro base stations, micro-cells become the mainstream, and the small base stations will be used as ...



[Optimal energy-saving operation strategy of 5G base station ...](#)

Dec 1, 2025 · To further explore the energy-saving potential of 5 G base stations, this paper proposes an energy-saving operation model for 5 G base stations that incorporates ...

Contact Us

For catalog requests, pricing, or partnerships, please visit:
<https://llsolarenergy.co.za>

Scan QR Code for More Information



<https://lsoleenergy.co.za>