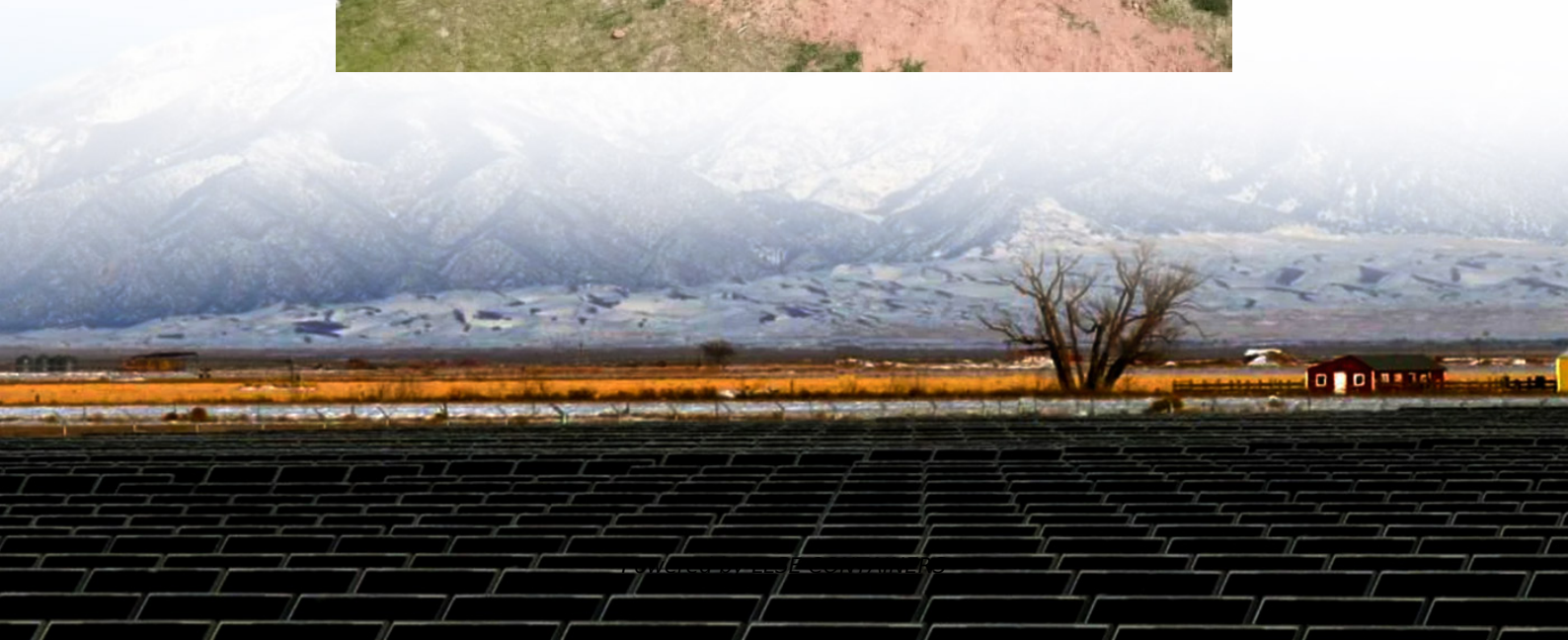


Do solar panels have the same power when connected in series





Overview

When solar panels are wired in series, the voltage of the panels adds together, but the amperage remains the same. Are solar panels connected in series or parallel?

So, in short: for solar panels connected in series, you add up the voltages, while for solar panels connected in parallel, you add up the current strengths. Let us walk you through connecting solar panels in series and in parallel and choose what works better for you! How do I wire a solar panel?

.

Should 12V solar panels be wired in series or parallel?

12V solar panels can be wired in either series or parallel, depending on your system requirements. For higher voltage systems, wire them in series to increase the overall voltage. For increased current and better performance under shaded conditions, wire them in parallel.

What is a series vs Parallel Solar System?

In many real-world solar installations, a combination of series and parallel wiring is used to balance voltage and current to fit specific system requirements. Understanding the differences between solar panels in series vs parallel connections is vital for designing a solar system that maximizes performance and longevity.

What if two solar panels are connected in series?

So, if you connect two solar panels with a rated voltage of 40 volts and a rated amperage of 5 amps in series, the voltage of the series would be 80 volts, while the amperage would remain at 5 amps. Putting panels in series makes it so the voltage of the array increases.



Do solar panels have the same power when connected in series



[How Do Solar Panels Connect In Series Vs Parallel?](#)

Dec 2, 2025 · Solar panels connected in series increase system voltage (VOC additive), while parallel connections boost current (ISC additive). For example, two 40V/10A panels in series ...

[How To Safely Connect Solar Panels In Series Or Parallel](#)

May 29, 2025 · Learn how to connect solar panels in series or parallel, including wiring diagrams, voltage differences, and expert DIY tips. Master your solar setup today!



[Connecting Solar Panels in Series or in Parallel? , EcoFlow US](#)

Jul 21, 2025 · To connect solar panels of the same model and rated power in series, wire the positive terminal to the negative terminal of each panel in the array. At the end of the chain, ...

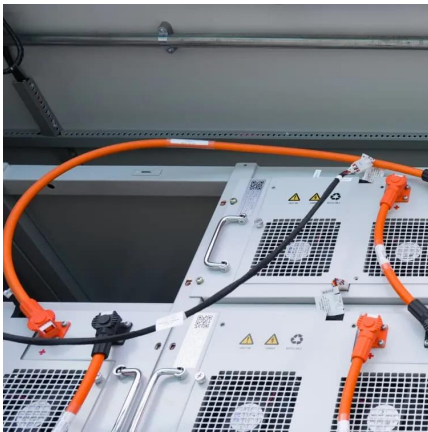
[Solar Panels in Series vs. Parallel: 6 Difference and Which Is ...](#)

Jun 18, 2025 · The wiring configuration impacts the system's voltage, current, overall performance, and reliability. Two common ways to connect solar panels are in series and in ...



[Solar Panel Series vs Parallel: Which is Better?](#)

Discover the optimal choice between solar panel series vs parallel configurations. Learn how to maximize efficiency and output with our comprehensive guide on solar panel series vs parallel ...



[The Ultimate Guide to Solar Panel Configurations: Series vs.](#)

Apr 23, 2025 · Introduction Choosing the right configuration for your solar panel system is crucial to ensure optimal performance and efficiency. When it comes to wiring and connecting multiple ...



[Series, Parallel & Series-Parallel Connection of Solar Panels](#)

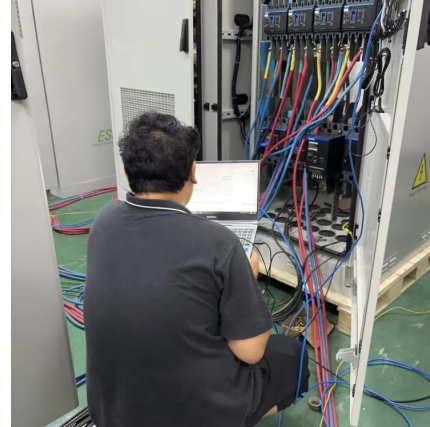
1 day ago · What is a Solar Photovoltaic Array? A Solar Photovoltaic Module is available in a range of 3 WP to 300 WP. But many times, we need power in a range from kW to MW. To ...





[Series, Parallel & Series-Parallel Connection of Solar Panels](#)

What Is A Solar Photovoltaic array?Series Connection of ModulesParallel Connection of ModulesSeries - Parallel Connection of Modules-Mixed CombinationSometimes to increase the power of the solar PV system, instead of increasing the voltage by connecting modules in series the current is increased by connecting modules in parallel. The current in the parallel combination of the PV modules array is the sum of individual currents of the modules. The voltage in the parallel combination of the modules See more on electricaltechnology SolarReviews



How To Wire Solar Panels In Series Vs.

How you wire solar panels will influence how much energy a solar system produces. Find out if wiring in series, parallel, or both, is best for you.



[What is a Series or Parallel Connection in Solar Panels?](#)

Aug 29, 2025 · A series connection links solar panels end-to-end. Technically, you connect the positive terminal of one panel directly to the negative terminal of the next. Voltage Behavior: ...

[How to Connect Multiple Solar Panels Together \(Series vs ...](#)

Jul 18, 2025 · If you're looking to increase your solar capacity, connecting multiple solar panels together is a great option. But should you wire them in series, parallel, or a combination of ...





[Solar Panel Series Vs Parallel: Wiring, Differences, And Your ...](#)

Nov 11, 2024 · Solar Panels Series vs Parallel: What Is The Difference? Whether you connect solar panels in series or in parallel, the total power output (in Watts) is the sum of the power ...

[How to Wire Two or More Solar Panels in Parallel](#)

Jan 11, 2025 · The connection of multiple solar panels in parallel arises from the need to reach certain current values at the output, without changing the voltage. In fact, by wiring several ...



[Solar Panels Series vs Parallel: Understanding and Difference](#)

Dec 1, 2023 · Learn the differences between wiring solar panels in series vs parallel, and find out which method is best for your system's efficiency, safety, and performance.

Contact Us

For catalog requests, pricing, or partnerships, please visit:
<https://llsolarenergy.co.za>



Scan QR Code for More Information



<https://llsolarenergy.co.za>