

Do lithium batteries need to be assembled in different capacities and groups





Overview

Can you mix different capacity lithium batteries?

Yes, you can mix different capacity lithium batteries, whether a normal 12V 100Ah battery or a Lithium server rack battery. You can combine different capacity batteries in parallel. You cannot combine different capacity batteries in series. There are a few points you need to consider when wiring in parallel. Let's explore these three points.

How to choose a lithium battery?

Replace all batteries when they run low. Use a lithium battery protection plate with corresponding parameters. Select batteries with consistent performance. Generally, lithium battery cells need to be paired for serial and parallel use. Pairing criteria: voltage difference $\leq 10\text{mV}$, internal resistance difference $\leq 5\text{m}\Omega$, capacity difference $\leq 20\text{mA}$.

What is the difference between lithium battery series and parallel?

Lithium batteries in parallel: the voltage remains the same, the capacity is added, the internal resistance is reduced, and the power supply time is extended. Lithium battery series and parallel: Both parallel combination and series combination are in the middle of the battery pack, which increases the voltage and capacity.

Are series and parallel connection of lithium batteries safe?

The series and parallel connection of lithium batteries is a key technology to increase voltage and capacity, but it also contains safety risks. This article will analyze in detail the principles, methods and precautions of series and parallel connection of lithium batteries to help you avoid potential risks and build a battery system correctly.



Do lithium batteries need to be assembled in different capacities and



[What Are the Different Types of Lithium Batteries and Their ...](#)

Apr 11, 2025 · The electrochemical process in Li-ion batteries involves lithium ions moving between the anode and cathode during charging and discharging. This design enables energy ...

[Why do lithium batteries need a different charger?](#)

Jan 17, 2024 · Lithium batteries require specialized chargers due to their unique charging profiles, voltage requirements, and safety features. Unlike traditional lead-acid batteries, lithium ...



[Helpful Guide to Lithium Batteries in Parallel ...](#)

Apr 23, 2024 · Part 1. What are lithium batteries in parallel and series? The voltage and capacity of a single lithium battery cell are limited. In actual ...



[Maximizing Power and Capacity: A ...](#)

Dec 3, 2024 · Maximizing power and capacity when connecting lithium-ion batteries involves understanding how to effectively wire them in series or ...



[Lithium Batteries in Series and Parallel: In-Depth Analysis](#)

Nov 14, 2025 · With the development of modern technology, lithium batteries have been widely used in electronic devices due to their excellent performance. However, the voltage and ...



[Can You Mix Different Capacity Lithium Batteries?](#)

Jun 20, 2023 · A comprehensive guide to mixing different capacity lithium batteries. Dive into the crucial aspects of voltage, BMS, fuses, and more.



[Can You Mix Different Capacity Lithium ...](#)

Jun 20, 2023 · A comprehensive guide to mixing different capacity lithium batteries. Dive into the crucial aspects of voltage, BMS, fuses, and more.





[Paralleling batteries... Some do's, don'ts and ...](#)

Sep 9, 2024 · While different age batteries have a significant effect for AGM batteries, it's much less so for LiFePO4, however it's still present. ...



[Helpful Guide to Lithium Batteries in Parallel and Series](#)

Apr 23, 2024 · Part 1. What are lithium batteries in parallel and series? The voltage and capacity of a single lithium battery cell are limited. In actual use, lithium batteries need to be combined ...

[Lithium Batteries in Series and Parallel: In ...](#)

Nov 14, 2025 · With the development of modern technology, lithium batteries have been widely used in electronic devices due to their excellent ...



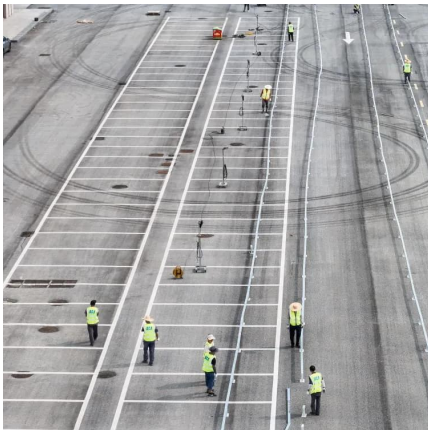
[How Are Lithium Battery Packs Assembled?](#)

Nov 17, 2025 · How Are Lithium Battery Packs Assembled? Lithium battery packs are essential components in various applications, from electric vehicles to renewable energy storage ...



[Lithium Batteries in series or parallel: What is ...](#)

The capacity of batteries in parallel: 2000mAh single battery can be assembled into a battery pack with a capacity of $2 \times (N)Ah$ according to ...



[Series vs Parallel Battery Setup: Optimize Performance](#)

Apr 4, 2025 · Is it better to connect lithium batteries in series or parallel? Choosing between series and parallel battery connections confuses many engineers. A wrong choice can reduce ...

[LITHIUM BATTERIES \(UN3090, UN3091, UN3480, UN3481\)](#)

Mar 27, 2025 · These instructions have been specifically prepared for the shipment of lithium batteries fully regulated as Class 9, UN3090, UN3091, UN3480, UN3481; effective January 1, ...



[Understanding Different Lithium Battery ...](#)

May 4, 2025 · Lithium batteries come in many cell formats--cylindrical (e.g., 18650, 21700, 26650), prismatic, and pouch--each optimized for specific ...



[Everything About Lithium Battery Series & Parallel](#)

May 21, 2025 · Learn how to safely connect lithium batteries in series and parallel. Avoid risks, extend battery life and build reliable power systems with our expert guide.



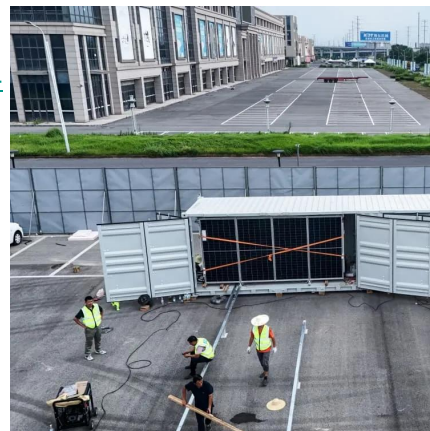
[Everything About Lithium Battery Series & Parallel](#)

May 21, 2025 · Learn how to safely connect lithium batteries in series and parallel. Avoid risks, extend battery life and build ...



[How to Assemble a Lithium Battery Pack: Step-by-Step ...](#)

Feb 9, 2025 · Assembling a lithium battery pack is a critical skill for anyone working with modern energy storage systems. Whether you're powering an electric vehicle, a renewable energy ...



[Can Lithium Batteries with Different Capacities Be Connected ...](#)

Jan 23, 2025 · Connecting lithium batteries in parallel is a common practice to achieve higher voltage and capacity, widely used in applications such as power tools, electric vehicles, and ...



[Lithium Batteries in series or parallel: What is the difference?](#)

The capacity of batteries in parallel: 2000mAh single battery can be assembled into a battery pack with a capacity of $2 * (N)Ah$ according to needs (N: number of single cells); Such as 4000mAh, ...



[Maximizing Power and Capacity: A Comprehensive Guide](#)

Dec 3, 2024 · Maximizing power and capacity when connecting lithium-ion batteries involves understanding how to effectively wire them in series or parallel configurations, ensuring ...

LITHIUM BATTERIES 101

Apr 28, 2022 · Introduction A brief history and overview of advanced battery chemistry: The first lithium-ion battery prototype Popular lithium (ion) cell types: What are batteries made of? What ...



[How to Safely Connect Lithium Batteries with Different Capacities](#)

Jan 14, 2025 · Conclusion Connecting lithium batteries with different amp-hour ratings is feasible with the right approach and precautions. By understanding the basics of series and parallel ...



Contact Us

For catalog requests, pricing, or partnerships, please visit:
<https://llsolarenergy.co.za>

Scan QR Code for More Information



<https://llsolarenergy.co.za>