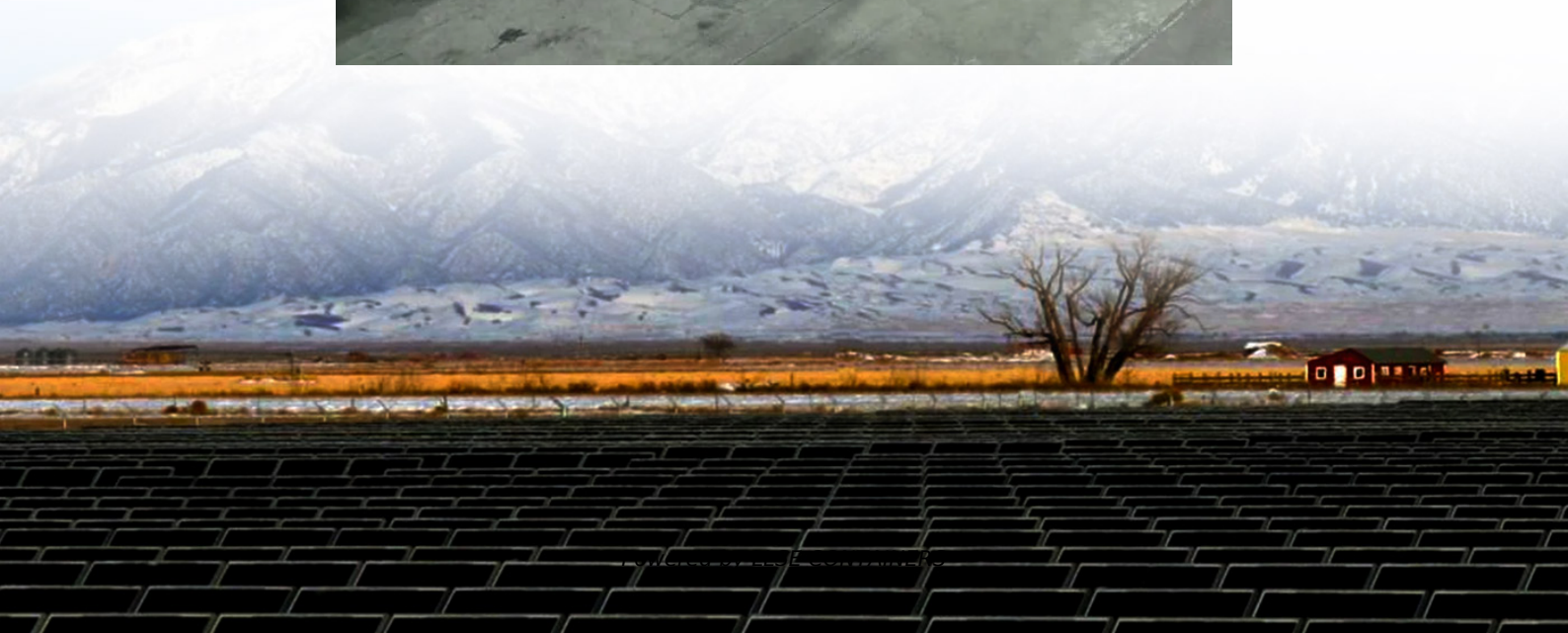


# **Communication network base station equipment includes**





## Overview

---

What is a base station in a telecommunications network?

A base station is a critical component in a telecommunications network. A fixed transceiver that acts as the central communication hub for one or more wireless mobile client devices. In the context of cellular networks, it facilitates wireless communication between mobile devices and the core network.

What are the components of a base station?

The base station will have one or more RF antennas installed to transmit and receive RF signals from other devices. The block diagram of a base station typically includes the following key components: Baseband Processor: The baseband processor too deals with different communication protocols and interfaces with mobile network infrastructure.

What equipment does a base station need?

Control Equipment: Base stations include control equipment that manages the communication protocols and coordinates the interaction between mobile devices and the network. This equipment ensures that data is routed correctly and efficiently. Power Supply: A reliable power supply is essential for the continuous operation of a base station.

What is the main base station equipment connection diagram?

The Core Layout: Main Base Station Equipment Connection Diagram The connection diagram provides a clear overview of how the main base station equipment operates within the network. Surrounding this central "brain" are the "Four Guardians" that ensure seamless functionality:



## Communication network base station equipment includes

---



### Cell Towers/Base Stations

Sep 3, 2023 · Base Station Equipment: The base station equipment includes the necessary electronics and hardware to support communication with mobile devices. It also handles signal ...

### [Complete Guide to 5G Base Station Construction , Key Steps, Equipment](#)

Nov 17, 2024 · At the heart of mobile communication networks lies the main base station equipment. Central to this setup are three critical components-- BBU (Baseband Unit), RRU ...

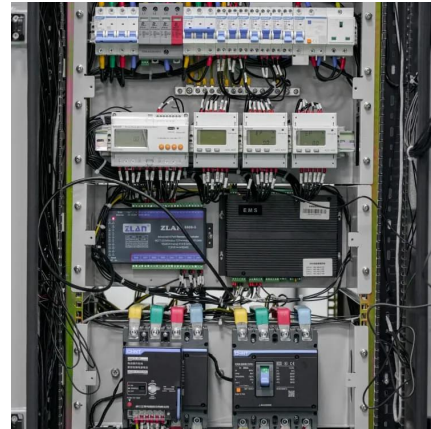


### [What is a Base Station in Telecommunications?](#)

Discover the role and functionality of a base station in telecommunications networks. Learn how these critical components manage communication between mobile devices and the network, ...

### [4.Basic Configuration of Base Stations , About DOCOMO](#)

The basic base station equipment for digital mobile communications systems consists of amplifiers (AMP) to amplify the transmission and reception signals to desired levels, modems ...



## Base Station Equipment - Types and Applications of Mobile Communication

The main components of 5G base station equipment are antennas, transceivers, baseband units, power supply units, and others. Antennas are essential components in 5G base stations, ...



### What Is a Base Station? Exploring the Core of 5G Networks ...

Aug 19, 2025 · Base stations are the core of mobile communication, and with the rise of 5G, thermal and energy challenges are increasing. This article explains the definition, structure, ...



### 1. What Is a Base Station and What Are Its Core Components?

A mobile communication base station is the radio facility that covers a specific area and enables data transmission between mobile phones and the core network. It is the frontline of the entire ...





## Contact Us

---

For catalog requests, pricing, or partnerships, please visit:  
<https://llsolarenergy.co.za>

### Scan QR Code for More Information



<https://llsolarenergy.co.za>