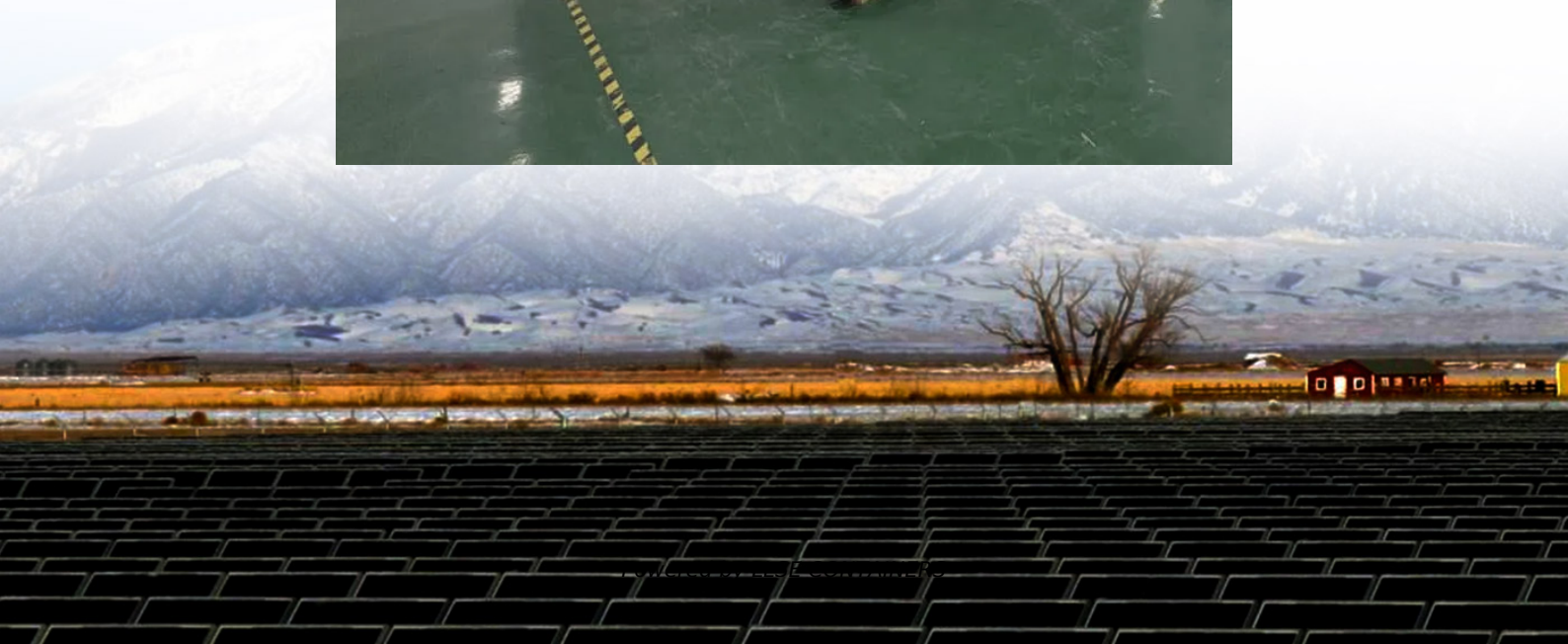


Communication method erecting a base station on the roof





Overview

What is a communication tower erection service?

Some communication tower erection services perform acquisition, acceptance, extreme load, and additional load inspections. Acquisition inspections verify the suitability of existing buildings, structures, designs, and equipment. Acceptance inspections ensure that a new tower is plumb and that guyed wires are properly tensioned.

Do powertelcom rooftop towers have angle profiles?

PowerTelcom offers tripod towers with 60-degree angle profiles and four-legged towers with standard angle profiles. Non-penetrating options are available for installations where roof membrane integrity must be maintained. What benefits do Rooftop Towers provide?

.

What are antenna towers & how do they work?

These towers mount directly on buildings to reduce height requirements and overall costs. They accommodate various antenna loads for microwave, GSM, CDMA, and other telecommunication systems while providing flexible installation options including poles, guyed masts, and lattice configurations.



Communication method erecting a base station on the roof

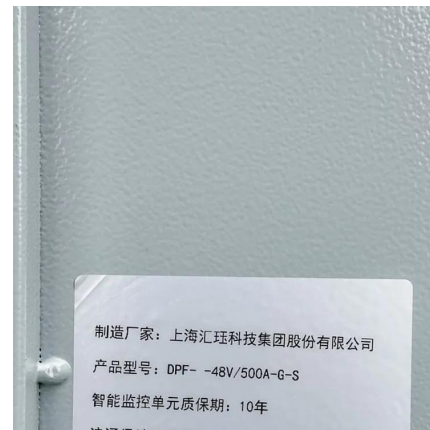


[Base station antennas on the roof of a building.](#)

Download scientific diagram , Base station antennas on the roof of a building. from publication: Utilizing Non-Orthogonal Polarization With Polarization Reuse Technique for 4 x 4 MIMO ...

[Rooftop Base Station , Huijue Group E-Site](#)

Each rooftop base station becomes a 3D network probe, mapping signal propagation in real-time. Suddenly, telecom operators aren't just service providers - they're urban digital twin architects.



[Blog -Communication Signal Tower Types & Design, Mobile Base Station](#)

Aug 12, 2024 · A rooftop tower, also known as a rooftop base station or rooftop site, refers to a telecommunication tower or antenna system that is installed on the rooftop of a building or ...

[Building a communication base station on the roof](#)

4 days ago · A telecommunications system (radio base station) may comprise an equipment room/shelter which is a structure for housing power supply and transmission equipment and/or

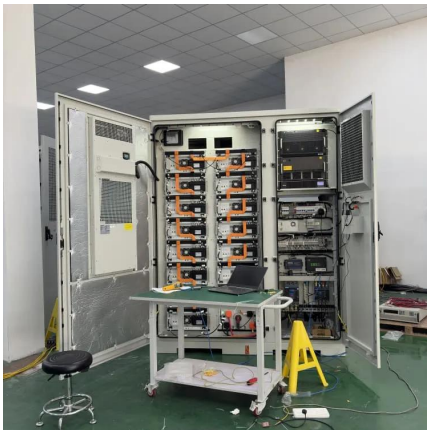


...



[Communication Tower Erection Services Selection Guide](#)

They are suitable for emergency communications, two-way radio, remote base stations, and cell-on-wheels (COW) applications. Platform towers are used in surveillance, recreation, and ...



[Communication Tower Erection Services Selection Guide](#)

5 days ago · Rooftop Tower Rooftop Tower, also known as rooftop telecom angular tower or rooftop base station, serves as a steel supporting structure designed for communication ...



[What Is A Rooftop Tower? -alrtower](#)

Jul 8, 2024 · A rooftop tower, also known as a rooftop base station or rooftop site, refers to a telecommunication tower or antenna system that is installed on the rooftop of a building or ...





Rooftop tower base station: the 'invisible communication ...

Jan 7, 2025 · What is the rooftop tower base station? From a high altitude in the city, the tower base stations on rooftops resemble steel guardians standing at the top of various buildings. It ...

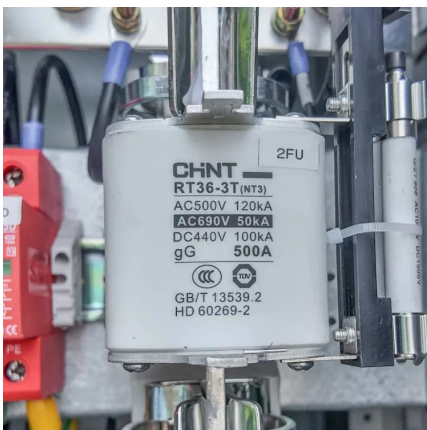
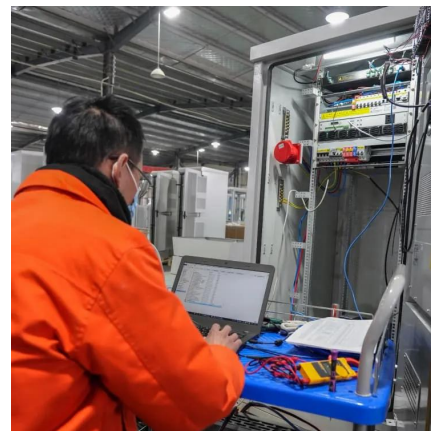


GUIDANCE NOTE FOR SUBMISSION OF APPLICATIONS ...

Oct 21, 2020 · 3. For installation of new radio base stations and reconfiguration of existing radio base stations involving changes in the structural design and planning perspective of the parent ...

A study on the ambient electromagnetic radiation level of 5G base

Feb 21, 2024 · Knowledge of the electromagnetic radiation characteristics of 5G base stations under different circumstances is useful for risk prevention, assessment, and management. ...



Design requirements for base stations on the roof of communication

What is rooftop base telecommunication station (RBTs)? Rooftop Base telecommunication station (RBTs) means a support structure attached to a roof, side or any other part of a building and ...



[A Review on Buildings having Telecommunication Tower at Roof](#)

We simulated earthquakes, both vertically and horizontally, and then used a method called linear dynamic analysis to measure how the towers moved and how much they swayed at their base.



Contact Us

For catalog requests, pricing, or partnerships, please visit:
<https://lsoleenergy.co.za>

Scan QR Code for More Information



<https://lsoleenergy.co.za>