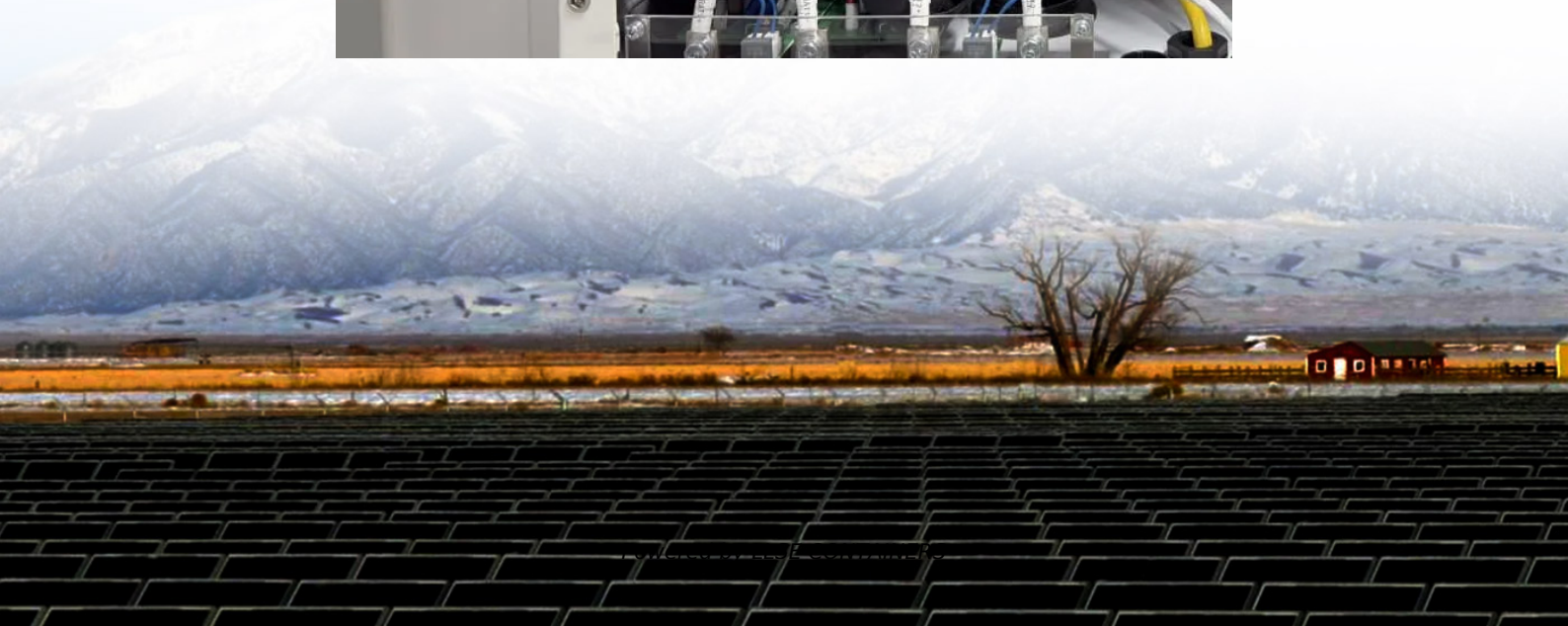


Can the inverter be directly connected to the solar panel





Overview

Can you connect an inverter to a solar panel?

In theory, you can indeed connect an inverter directly to a solar panel, but usually it's necessary to install a special inverter designed to handle voltage fluctuations and convert them into a steady stream of constant voltage. This means using a solar charge controller and a battery, particularly for non-hybrid installations.

How do I set up a solar inverter?

Existing inverters in grid-tied systems operate from a control panel. Set the amount of amps you need your inverter to pull from the solar panels. You can also switch off the electricity grid in a way the system runs on solar a ray only. Start the system and check if the control panel is sending any current to your inverter.

How to choose a solar inverter?

Specifications can vary so make sure to check the inverter before connecting any solar panel to it. Generally speaking, the inverter can handle 30% more power than the rated power. If you decide that you want to add some more solar panels to your system, then look for those with at least a 20% efficiency rating.

How does a solar inverter work?

Solar panels harvest energy from the sun and send it to the solar battery in one direction as DC. Since most appliances at a home run in AC, an inverter is incorporated into the solar PV system. The inverter converts the Direct Current into Alternating Current which is sent in different pieces in one second.



Can the inverter be directly connected to the solar panel



[How to connect solar panels to the inverter?](#)

Oct 26, 2020 · When you have solar panels, your primary concern is to make the best use of them. As we all know, solar energy generated by the PV

...

[How To Connect Solar Panels to an Inverter](#)

Jun 24, 2025 · Solar panels should always be wired to an inverter through a charge controller first rather than connected directly. This helps ensure ...



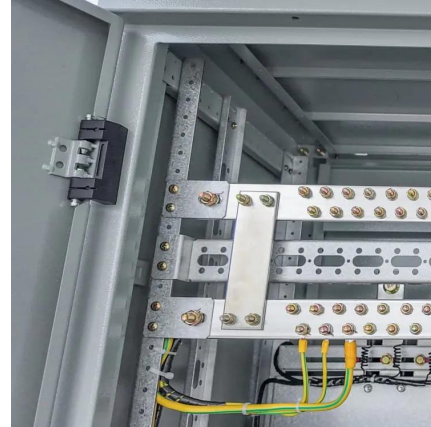
[How to connect a solar panel to an existing ...](#)

Nov 25, 2023 · Connecting Directly to a Solar-Ready Inverter: If the inverter is designed for direct solar input (as in hybrid or grid-tie inverters), you ...

[How to Connect Solar Panel to Inverter](#)

Jun 9, 2025 · Learn how to connect solar panels to an inverter in 8 easy steps. Discover inverter types, wiring methods, safety tips, and ways to

...



[Can You Run an Inverter Directly from a Solar Panel?](#)

For a regular off-grid solar panel system you need a number of different components including batteries, an inverter, and a solar charge controller. But you might be wondering if you can run ...



[How to Wire Solar Panels to Inverter: ...](#)

Mar 8, 2024 · How to Wire Solar Panels to Inverter: Connect them in series, parallel, or a combination of both, depending on the voltage & current output.



[How to Connect Solar Panel to Inverter](#)

Jun 9, 2025 · Learn how to connect solar panels to an inverter in 8 easy steps. Discover inverter types, wiring methods, safety tips, and ways to optimize your solar system.





[Can You Connect A Solar Panel Directly To An Inverter](#)

Aug 8, 2025 · To connect solar panels directly to an inverter, you will need solar panels, an inverter (like string or microinverters), mounting equipment, appropriate wiring, and ...

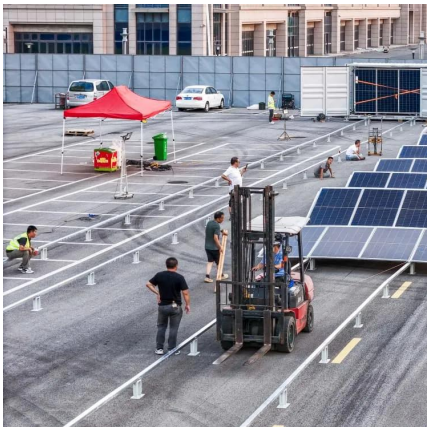
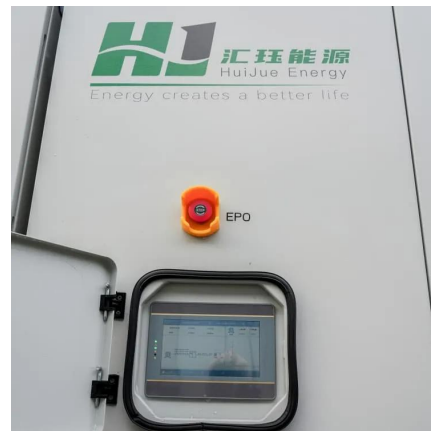


[Connect Solar Panels To An Inverter: A Step ...](#)

However, to truly harness the potential of solar energy, connecting the solar panels to an inverter is essential. The inverter serves as the heart of the ...

[Can Solar Panel Be Connected Directly to Inverter?](#)

Oct 24, 2025 · Whether solar panels can be connected directly to inverter depends on whether the voltage and power are perfectly matched, as well as the system type and environmental ...



[Can I Connect My Solar Panels Directly to My Inverter?](#)

Oct 23, 2025 · Considering wiring your solar panels directly to your inverter? This sounds simple, but there's a whole lot more to it than just wiring wires. If you're installing solar panels, you'll ...



[How to Connect a Solar Panel to an Inverter: ...](#)

2 days ago · Solar panels are the go-to solution for clean energy in the era of global energy transition. However, solar panels alone are not enough; a ...



[Can I connect an inverter directly to a solar ...](#)

May 27, 2025 · There's a common question among solar energy enthusiasts: can you connect an inverter directly to a solar panel? Understanding the ...

[How to Connect a Solar Panel to an Inverter](#)

Aug 7, 2025 · Learn how to connect a solar panel to an inverter with step-by-step guides, inverter types, optimization tips, and FAQs. Discover AUXSOL's tailored solar solutions for efficient ...



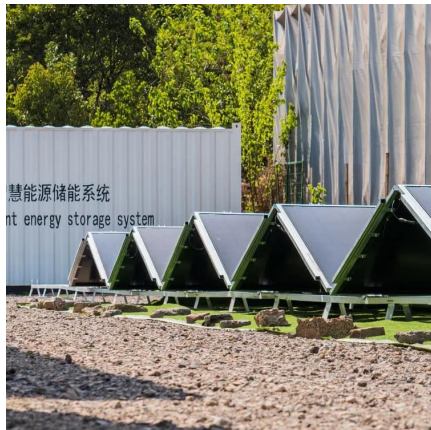
[How to connect a solar panel to an existing inverter?](#)

Nov 25, 2023 · Connecting Directly to a Solar-Ready Inverter: If the inverter is designed for direct solar input (as in hybrid or grid-tie inverters), you can connect the solar panel directly to the ...



[How to connect solar panels to inverter and ...](#)

May 7, 2025 · This guide explains how to connect solar panels to an inverter safely and effectively. We'll also discuss factors like inverter capacity to ...

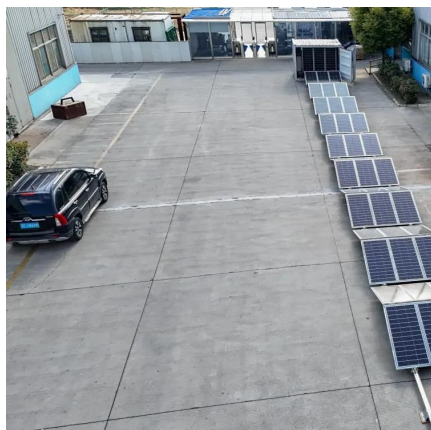


[Can I Connect Solar Panel Directly to Inverter](#)

No, connecting solar panels directly to an inverter is unsafe and inefficient. You need a charge controller to regulate voltage (typically 12V/24V/48V) and prevent cell overcharging. Grid-tied ...

[Direct Power from the Sun: 7 Essential Connectors for Can You Connect](#)

Well, the answer to "can you connect an inverter directly to a solar panel" isn't a simple yes or no. While it's technically possible under very specific circumstances, it's generally not ...



[How to Connect a Solar Panel to an Inverter: A Beginner ...](#)

2 days ago · Solar panels are the go-to solution for clean energy in the era of global energy transition. However, solar panels alone are not enough; a conversion device is needed to ...



[Can I connect an inverter directly to a solar panel?](#)

May 27, 2025 · There's a common question among solar energy enthusiasts: can you connect an inverter directly to a solar panel? Understanding the relationship between these



[Can I Connect Solar Panel Directly to Load?](#)

Oct 3, 2022 · There are many factors that affect solar panel output, but one of the most significant is the season. In winter, panels may produce less due ...

[Connecting Solar Panel Directly to Inverter?](#)

Jan 9, 2024 · Discover if you can connect solar panel directly to inverter, and learn about the implications for your solar setup in Kenya with our expert ...



[Can You Run an Inverter Directly from a Solar ...](#)

For a regular off-grid solar panel system you need a number of different components including batteries, an inverter, and a solar charge controller. ...



Contact Us

For catalog requests, pricing, or partnerships, please visit:
<https://llsolarenergy.co.za>

Scan QR Code for More Information



<https://llsolarenergy.co.za>