

Can solar be directly connected to an inverter





Overview

Why do I need to connect more solar panels to my inverter?

There are two reasons why you might need to connect more solar panels to your inverter. A solar panel does not work 100% efficiently. There will always be some variables such as weather variations that hinder the panel from collecting solar energy at its maximum.

Does a solar panel send current to an inverter?

However, a solar panel does not send current to an Inverter. An Inverter pulls the current it needs from the solar panel. If the solar panel is 10kilowatts and your inverter needs 5killowatts, the inverter will only pull 5kilowatts from the solar panels. If you have more space on your rooftop to add more panels, then you should add them.

Do solar panels need an inverter?

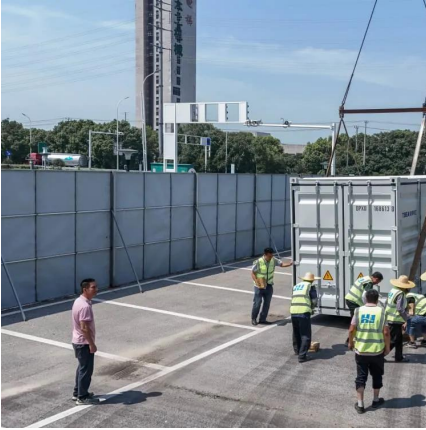
A solar power system requires an inverter to convert DC into AC power. You do not need an inverter for DC powered devices like motors, as they can be connected directly to the solar panel. Solar panels produce DC power. You can connect any device or appliance that runs DC onto it directly. No need for an inverter or battery.

How do you connect a solar panel to an inverter?

Connect the solar panel to the inverter. The connectors are included in your PV kit. Plug them into the proper input. Once everything is set, test the panel and inverter. The system should start charging provided the sun is out. Just make sure all the wires are tight, otherwise you might run into problems like a solar panel with no voltage.



Can solar be directly connected to an inverter



[Can I connect an inverter directly to a solar panel](#)

May 27, 2025 · There's a common question among solar energy enthusiasts: can you connect an inverter directly to a solar panel? Understanding the relationship between these

[How to Connect a Solar Panel to an Inverter: A Beginner ...](#)

Solar panels are the go-to solution for clean energy in the era of global energy transition. However, solar panels alone are not enough; a conversion device is needed to convert DC ...



[Can You Run an Inverter Directly from a Solar ...](#)

For a regular off-grid solar panel system you need a number of different components including batteries, an inverter, and a solar charge controller. ...



[Can Solar Panel Be Connected Directly to Inverter?](#)

Oct 24, 2025 · Whether solar panels can be connected directly to inverter depends on whether the voltage and power are perfectly matched, as well as the system type and environmental ...



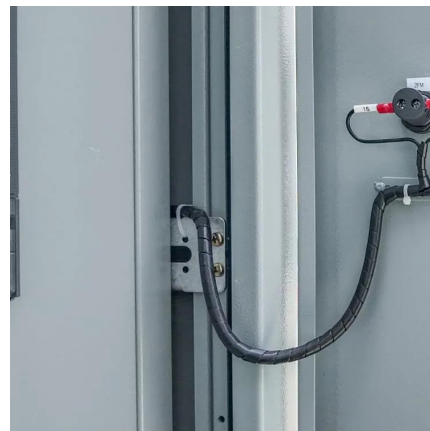
[Can I connect an inverter directly to a solar ...](#)

May 27, 2025 · There's a common question among solar energy enthusiasts: can you connect an inverter directly to a solar panel? Understanding the ...



[Cracking the Code: Can a Solar Panel Be Connected Directly ...](#)

Typically, a solar panel produces DC (Direct Current) electricity, which needs to be converted into AC (Alternating Current) electricity by an inverter to power your household appliances or feed ...



[Can I Connect My Solar Panels Directly to My Inverter?](#)

Oct 23, 2025 · Considering wiring your solar panels directly to your inverter? This sounds simple, but there's a whole lot more to it than just wiring wires. If you're installing solar panels, you'll ...





[How to connect a solar panel to an existing ...](#)

Nov 25, 2023 · Connecting Directly to a Solar-Ready Inverter: If the inverter is designed for direct solar input (as in hybrid or grid-tie inverters), you ...

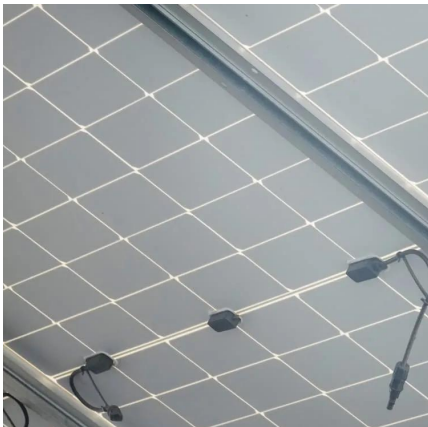


[Can I Use a Power Inverter With a Solar Panel?](#)

When putting together a solar power system for something like an RV, boat, or a small cabin, you might wonder if you can connect a solar panel directly to a power inverter to keep it simple. ...

[Can You Connect A Solar Panel Directly To An Inverter](#)

Aug 8, 2025 · To connect solar panels directly to an inverter, you will need solar panels, an inverter (like string or microinverters), mounting equipment, appropriate wiring, and ...



[How to connect a solar panel to an existing inverter?](#)

Nov 25, 2023 · Connecting Directly to a Solar-Ready Inverter: If the inverter is designed for direct solar input (as in hybrid or grid-tie inverters), you can connect the solar panel directly to the ...



[Can You Run an Inverter Directly from a Solar Panel?](#)

For a regular off-grid solar panel system you need a number of different components including batteries, an inverter, and a solar charge controller. But you might be wondering if you can run ...



Contact Us

For catalog requests, pricing, or partnerships, please visit:
<https://llsolarenergy.co.za>

Scan QR Code for More Information



<https://llsolarenergy.co.za>