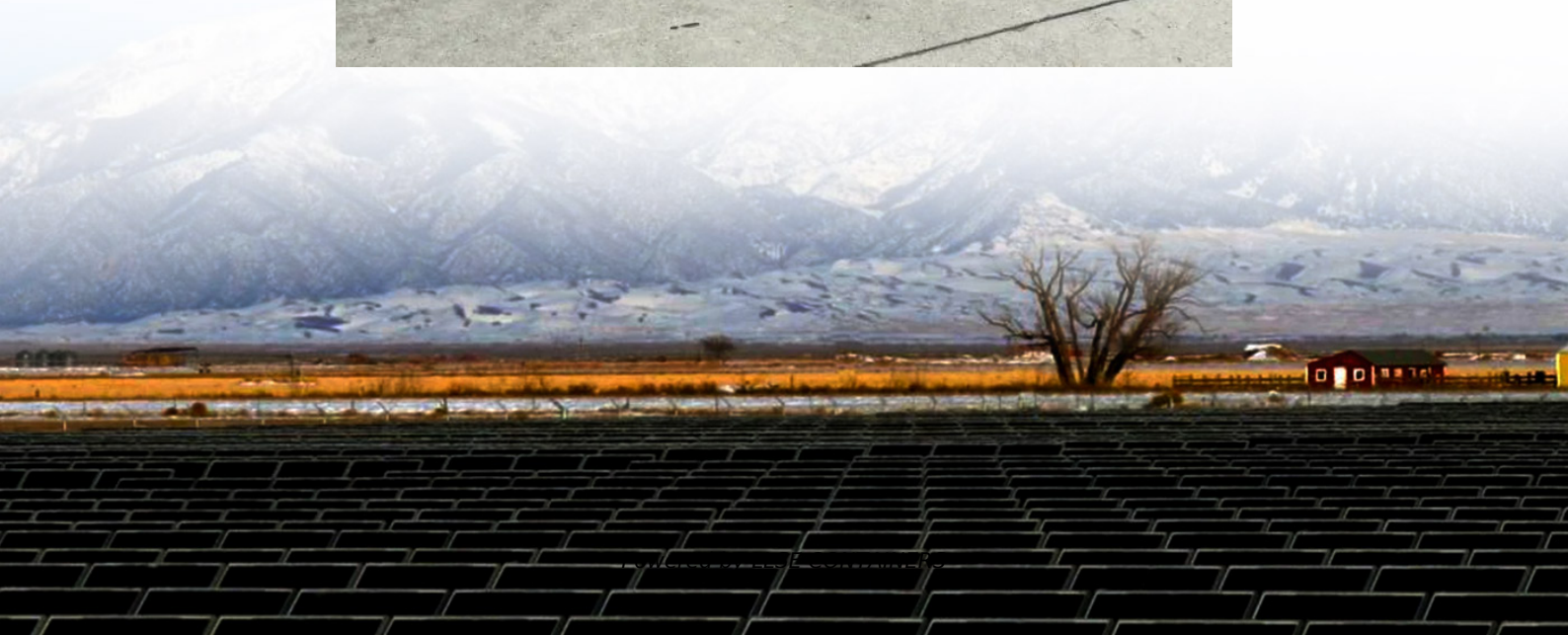


Can a 12v battery be used as an inverter





Overview

Can a 12V battery power an inverter?

Here's the magic: by connecting your 12v battery to an inverter, you unlock the potential to power various devices, bringing a touch of home comfort to your off-grid adventures. But there's a catch - the amount of time your battery can provide power depends on several factors. That's what we'll explore in the next part!.

Can a 12 volt car battery support a high power inverter?

Typically, a 12-volt car battery can support an inverter with a power range of about 150 watts to 1500 watts. Please note, however, that car batteries are not suitable for driving high power inverters for extended periods of time, which may cause damage to the battery.

Can a high power inverter be used on a car battery?

When using a high power inverter, it may be necessary to consider a battery with additional deep cycles to ensure that the car battery is not damaged by continuous discharge. For standard automotive batteries, it is recommended that inverter power not exceed 600 watts for safety and battery life.

How does a 12V battery work?

A 12v battery, familiar from most vehicles, stores electrical energy. It's like a little reservoir of power waiting to be tapped. Inverter: Think of an inverter as a translator. It takes the direct current (DC) stored in your 12v battery and converts it into alternating current (AC) - the type of electricity used to power most appliances.



Can a 12v battery be used as an inverter



[Can You Use a 24 volt inverte With a 12V Battery System?](#)

Jul 19, 2025 · 24 Volt Inverter on 12V Battery: Risky Mismatch Trying to power a 24 volt inverter with half the voltage is like feeding a sports car watered-down fuel--performance collapses ...

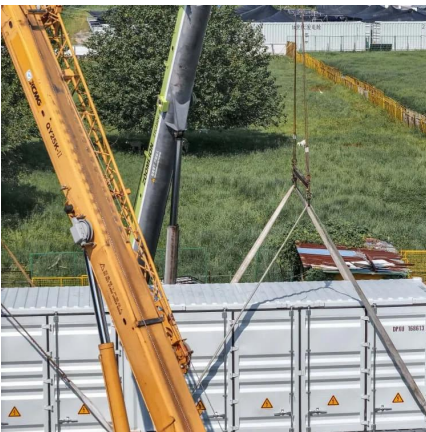
batteries

Apr 6, 2017 · A "deep cycle" battery would be better than a car starting battery, because it is designed to withstand deep discharges, while starting batteries are designed to deliver high ...



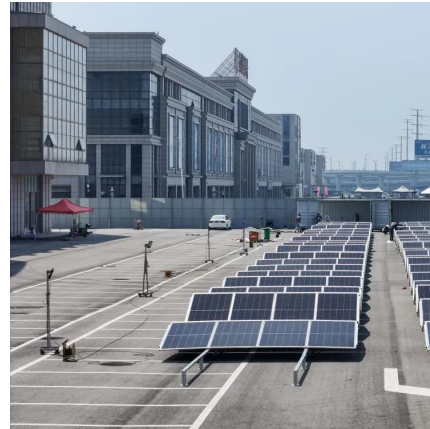
[Can an Inverter Be Too Big for Your Battery System?](#)

How to Calculate the Right Inverter Size for Your Battery Match the inverter's continuous wattage rating to the battery's discharge capacity. For a 12V 200Ah battery (2.4kWh), a 2000W inverter ...



[How Long Will A 12V Battery Last With an Inverter](#)

Jun 8, 2024 · This is where the magic of a 12v battery and inverter come in. They can transform your 12v battery, typically found in cars, into a portable power source, letting you enjoy some ...



[Can I Use a 12V 7AH Battery with an Inverter?](#)

Dec 26, 2023 · Yes, you can use a 12V 7Ah battery with an inverter, provided that the inverter is compatible with a 12V input. This configuration is suitable for low-power applications, such as ...

[What Is A 12V Inverter And Where Is It Used?](#)

A 12V inverter is a device that converts 12V DC power from batteries or solar panels into 120V/230V AC electricity, enabling the use of household appliances in off-grid or mobile ...



[Best Inverter For 12v Battery \[Updated: December 2025\]](#)

Aug 3, 2025 · A 12V battery inverter is a device that converts direct current (DC) energy from a 12V battery into alternating current (AC) energy. This allows the use of battery power for ...





What does a power inverter do, and what can I use one for?

The inverter draws its power from a 12 Volt battery (preferably deep-cycle), or several batteries wired in parallel. The battery will need to be recharged as the power is drawn out of it by the ...

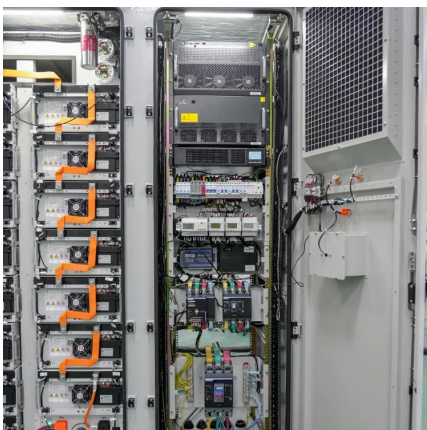


What size inverter can you run off a car battery?

Aug 11, 2025 · A typical 12-volt car battery can safely support an inverter ranging from about 150 watts up to 600 watts for regular use without harming the battery. While it is technically ...

Can I Use a Car Battery for an Inverter?

May 2, 2025 · Yes, you can use a car battery for an inverter, but it's not always the most efficient or long-lasting solution. While car batteries are designed for short bursts of power to start a ...



Understanding Battery Capacity and Inverter Compatibility

Aug 20, 2024 · How Long Can a 100 Ah Battery Run a 1000W Inverter? To estimate how long a battery can run an inverter, we need to consider the power draw and the battery's capacity. ...



[Car Battery Inverter Guide: Power Your Devices Anywhere ...](#)

Jun 24, 2025 · Learn how to safely use a car battery inverter, how long it lasts, what battery to choose, and key tips for powering devices off-grid or during outages.



[How Big of an Inverter Can My Car Battery Handle?](#)

Mar 26, 2025 · To determine the maximum inverter power that your vehicle's battery can support, you need to know the battery's rated voltage (12V for most automotive batteries) and the ...

[How long will a 12v battery last with inverter](#)

Apr 30, 2025 · How long will a 12v battery last with an inverter? Here is a completed explication on the factors that affect the run time of 12v battery and the calculation formula.



Contact Us

For catalog requests, pricing, or partnerships, please visit:
<https://llsolarenergy.co.za>



Scan QR Code for More Information



<https://llsolarenergy.co.za>