

Can 24V solar container lithium battery packs be connected in series





Overview

Yes, solar batteries can be connected in series. When you connect batteries in series, the voltage of each battery adds up, but the current remains the same as that of a single battery. How to connect lithium solar batteries in series?

Connecting Lithium Solar Batteries in Series: To connect lithium solar batteries in series, you simply link the negative pole of one battery to the positive pole of the next battery. This ensures that the same current flows through all the batteries. The total voltage of the series connection is the sum of the individual voltages.

What is the purpose of connecting lithium solar batteries in series?

The main purpose of connecting lithium solar batteries in series is to increase the output voltage. By adding up the voltages of the individual batteries, you can power devices that require higher voltage amounts. For example, connecting two 24V 100Ah batteries in series will result in a combined voltage of 48V while maintaining the same capacity.

Should you connect lithium solar batteries in series or parallel?

In a parallel connection, the capacity increases while maintaining the same voltage, ideal for longer run times. When setting up lithium solar batteries, understanding how to connect them in series or parallel is crucial for maximizing efficiency and performance. Below, we delve into the specifics of each configuration.

Can a lithium battery be connected in a series?

At Valen, we don't recommend series connecting Lithium batteries. However, Lithium batteries can be placed in parallel if required and done correctly. To explain why it is best to first understand how Lithium battery technology works.



Can 24V solar container lithium battery packs be connected in series



[How to Connect Lithium Solar Batteries in Series & Parallel](#)

May 5, 2024 · Connecting lithium solar batteries in series or parallel is essential for customizing energy storage systems. In a series connection, the voltage increases while the capacity ...

[Connecting Lithium Solar Batteries In Series And In Parallel](#)

Aug 11, 2024 · European new energy policies place emphasis on the adoption of renewable energy, a key example being solar power. Wiring lithium solar batteries in series and in parallel ...



[Can You Connect LiFePO4 Batteries in Series?](#)

Apr 29, 2024 · Learn how to safely and efficiently connect LiFePO4 batteries in series to achieve higher voltages (e.g., 12V to 24V). This expert guide covers technical insights, advantages, ...

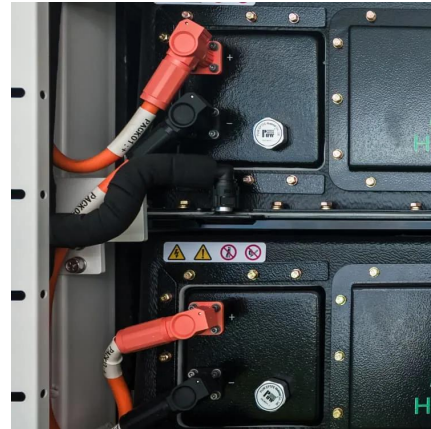


[Can Solar Batteries Be Connected in Series?](#)

Apr 27, 2025 · When to Connect Batteries in Series Higher Voltage Systems: If your solar system requires a voltage higher than 12V --for example, 24V or 48V --connecting multiple



batteries ...

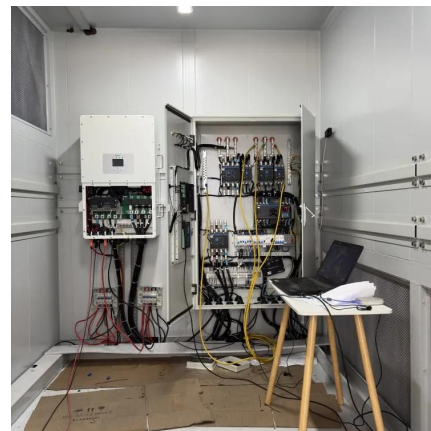


[Lithium Solar Batteries Series vs Parallel Connection](#)

Apr 27, 2025 · Lithium solar batteries are essential components of solar energy systems, providing reliable energy storage for various applications. Understanding how to connect these ...

[Can a lithium battery pack be used in series?](#)

May 28, 2025 · The ability to customize the voltage by connecting battery packs in series allows manufacturers to design vehicles with different power requirements. So, in conclusion, lithium ...



[Batteries in Series vs Parallel: Understand The Differences](#)

Nov 18, 2025 · Imagine you're setting up a solar power system for your off-grid cabin or building an electric vehicle from scratch. You've got your batteries ready, but now comes a crucial ...



[Can lithium battery cells be connected in series?](#)

Jul 24, 2025 · By connecting lithium battery cells in series, you can create a battery pack with the right voltage to store and use the solar energy effectively. Take our 24V 3Ah LFP Solar ...



[How to Effectively Connect Batteries in Series and Parallel?](#)

Jan 4, 2025 · Connecting batteries in series or parallel affects voltage, capacity, and overall system performance. Understanding the proper methods and safety precautions ensures ...

What are the implications of connecting lithium battery packs in series?

Apr 25, 2021 · The concern with series-connected batteries of any type is uneven charge/discharge rates within the string of cells. This can cause overcharging of some cells, ...



[Can a 24v 100ah lithium battery 2.56kwh be used in series ...](#)

May 21, 2025 · In conclusion, our 24V 100Ah lithium battery with a 2.56 kWh capacity can be used in series with other compatible batteries, provided that the necessary precautions are taken. ...



[How to best connect Lithium batteries in series](#)

Jul 7, 2020 · We instead recommend using Lithium batteries that are designed and manufactured to the required system voltage. For example, a 24V 100Ah caravan battery system could be ...



Contact Us

For catalog requests, pricing, or partnerships, please visit:
<https://llsolarenergy.co.za>

Scan QR Code for More Information



<https://llsolarenergy.co.za>