

Battery Priority Inverter





Overview

What are the working modes of a solar inverter?

Usually solar inverters have three working modes, PV (battery) priority, mains priority and ECO mode. Which working mode can maximize the utilization of photovoltaic energy and meet customer requirements as much as possible. It certainly seems an appropriate subject of discuss.

What is solar and wind priority mode?

The Solar and wind priority mode works for systems with a managed battery, where a BMS manages the charging process (DVCC) and more traditional systems where the inverter/charger runs its own charge process. Examples of managed battery systems are Lynx Smart BMS, MG Energy Systems batteries with MG Master LV, and similar.

What are the working modes of xindun solar inverter?

Xindun solar inverters have three working modes: PV mode, mains mode and ECO mode. Which inverter mode can maximize the utilization of pv energy and meet customer requirements as much as possible?

How to choose the working modes of solar inverter?

Usually solar inverters have three working modes, PV (battery) priority, mains priority and ECO mode.

How do I override solar and wind priority?

Operation Once solar and wind priority is activated, it can be overridden at any time via a virtual switch in VictronConnect, the VRM portal or the GX device to force charging with shore power to charge the battery to 100%. Once charging is complete, the system will return to sustain mode and prioritise solar and wind power.

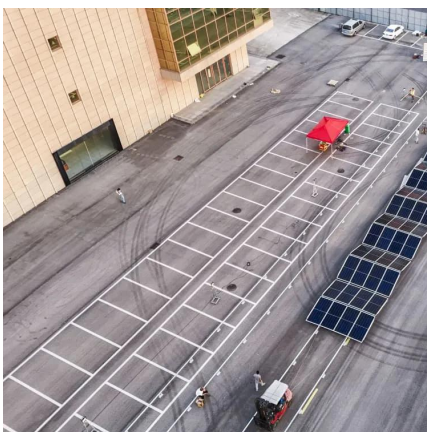


Battery Priority Inverter



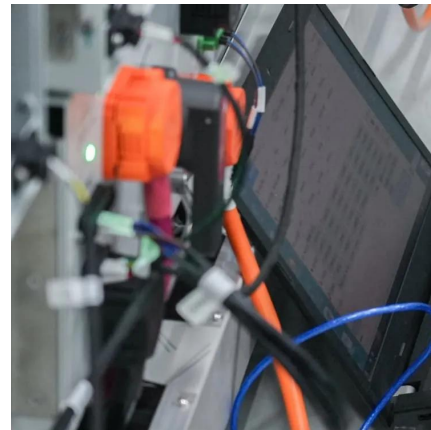
12 of 20

Jun 9, 2022 · On the inverter screen there is an arrow between the inverter and battery - this indicates power flow between the two Arrow pointing towards the battery means the battery is ...



[How to Select the Right Working Mode for an ...](#)

Sep 8, 2025 · Learn how to choose the right inverter mode for an off-grid solar system, including PV priority, and battery priority options.



[How to Choose the Operating Mode of Solar ...](#)

May 5, 2022 · What are the working modes of solar inverters? Battery (solar) priority mode When the solar inverter battery is fully charged, the load will ...

[Why inverter need Inverter battery priority unattended?](#)

An inverter with battery priority is a type of power inverter that allows a battery bank to take precedence over an external power source. This means that if the battery bank is charged and ...



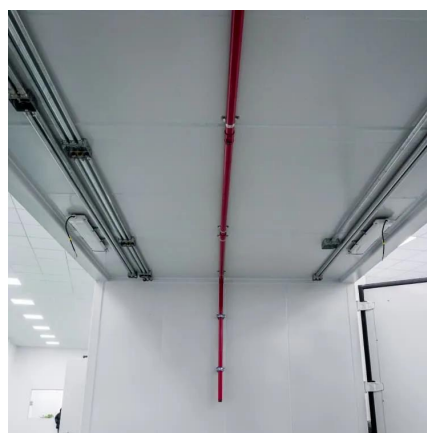
[How to Select the Right Working Mode for an Off-Grid Solar...](#)

Sep 8, 2025 · Learn how to choose the right inverter mode for an off-grid solar system, including PV priority, and battery priority options.



[AC / Battery Priority Mode Switch - Siginer...](#)

Jun 29, 2016 · In AC priority mode, when AC input is present, the battery will be charged first, and the inverter will transfer the input AC to power the ...



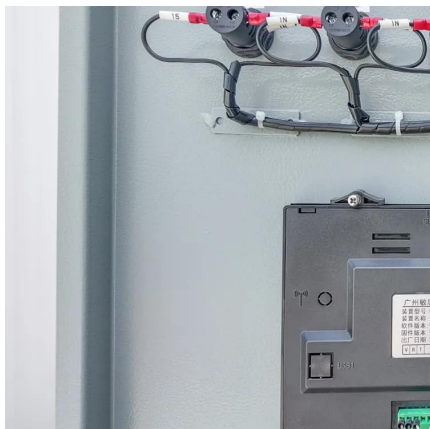
Solar & Wind Priority

Sep 18, 2024 · The Solar and wind priority mode works for systems with a managed battery, where a BMS manages the charging process (DVCC) and more traditional systems where the ...



[battery priority inverter, battery priority inverter Suppliers ...](#)

The strategic use of a battery priority inverter can lead to significant energy savings and improved system efficiency. By prioritizing battery storage, these inverters help in reducing electricity ...



[Why inverter need Inverter battery priority unattended?](#)

When the battery voltage returns to the set parameters, the inverter will automatically turn on without us having to turn it on? Inverter battery priority unmanned operation refers to a ...

[Hybrid Inverter Output Priority](#)

May 27, 2020 · I just watched Will's video about the Growatt inverter: No Battery Solar Power System: Growatt SPF 3000TL LVM-ES So I started to read up on this particular inverter. It's a ...



[How to Choose the Operating Mode of Solar Inverter?](#)

May 5, 2022 · What are the working modes of solar inverters? Battery (solar) priority mode
When the solar inverter battery is fully charged, the load will be powered by the battery even if the ...



[How to choose the working modes of solar inverter?](#)

May 29, 2021 · Usually solar inverters have three working modes, PV (battery) priority, mains priority and ECO mode. Which working mode can maximize the utilization of photovoltaic ...



[How to choose the working modes of solar ...](#)

May 29, 2021 · Usually solar inverters have three working modes, PV (battery) priority, mains priority and ECO mode. Which working mode can ...



[AC / Battery Priority Mode Switch - Sagineer Power](#)

Jun 29, 2016 · In AC priority mode, when AC input is present, the battery will be charged first, and the inverter will transfer the input AC to power the load. Only when the AC input is stable for a ...



Contact Us

For catalog requests, pricing, or partnerships, please visit:
<https://lsolarenergy.co.za>



Scan QR Code for More Information



<https://lsolarenergy.co.za>