

# **Base station site installation requirements**





## Overview

---

Where should a base station be installed?

The location is the actual environment in which the base station will be installed. Typically, this means outside in an open sky environment (e.g. on the roof of a building or in an empty field). Figure 2 shows a typical fixed installation of several antennas, including a VeraChoke and a VeraPhase 6000, on a roof.

How do I set up a base station?

Set up the base station using either the tripod or T-bar mounting method. You must use an external radio antenna kit for the internal 450 MHz or 900 MHz radio. To avoid interference between the 900 MHz radio and GPRS transmissions, do not mount the external radio antenna within 1 m (3.3 ft) of the GSM antenna.

Should a base station be permanent or semi-permanent?

The requirement for a permanent base station setup increases as more receivers that use the base station as a source of corrections, increases the cost of any base station downtime. On the largest jobsites, and on those that remain operational for the longest time, a permanent or semi-permanent installation is a popular solution.

What is the main base station equipment connection diagram?

The Core Layout: Main Base Station Equipment Connection Diagram The connection diagram provides a clear overview of how the main base station equipment operates within the network. Surrounding this central "brain" are the "Four Guardians" that ensure seamless functionality:



## Base station site installation requirements

---



### [How to set up a base station - Chapter 1: Introduction](#)

This is the first of a series of articles dealing with how to correctly set up a base station. In this article, we give a brief introduction and explain the most important concepts.

### [Process of Installing a Base Transceiver Station \(BTS\)](#)

Dec 12, 2024 · Installing a Base Transceiver Station (BTS) is a critical step in building mobile communication networks. Here's a step-by-step guide to the process: 1.



### [Installation Criteria for a 5G Technology Cellular Base Station](#)

Sep 4, 2025 · In this research, employing analysis and study-based methodology, the conditions of the typical cellular base station of the mobile operator were evaluated, finding that the ...

### [Site earth and BTS grounding requirements](#)

Site earthing and site equipment grounding considerations and recommendations. BTS site grounding is divided into two contexts: site earthing and site equipment grounding. To protect ...



### [Common ways to set up a base station](#)

Dec 1, 2025 · On the largest jobsites, and on those that remain operational for the longest time, a permanent or semi-permanent installation is a popular solution. A receiver is typically used as ...



### [Process of Installing a Base Transceiver ...](#)

Dec 12, 2024 · Installing a Base Transceiver Station (BTS) is a critical step in building mobile communication networks. Here's a step-by-step guide to ...



### [Installation of Base Stations and Radiation Safety](#)

Oct 9, 2025 · The rollout of 5G services needs the establishment of an extensive network of radio base stations and small cells to support very high-speed data transmission and ubiquitous ...





## [Requirements for Installation and Operation](#)

May 19, 2025 · Installation requirements 21  
Checking the site 21 Space requirements 21  
Nokia MetroSite Base Station dimensions and weight Clearances around BTS 22 Mounting locations ...



## [Complete Guide to 5G Base Station Construction . Key Steps, ...](#)

Nov 17, 2024 · Explore how 5G base stations are built--from site planning and cabinet installation to power systems and cooling solutions. Learn the essential components, technologies, and ...

## [How to set up a base station - Chapter 1: ...](#)

This is the first of a series of articles dealing with how to correctly set up a base station. In this article, we give a brief introduction and explain the ...



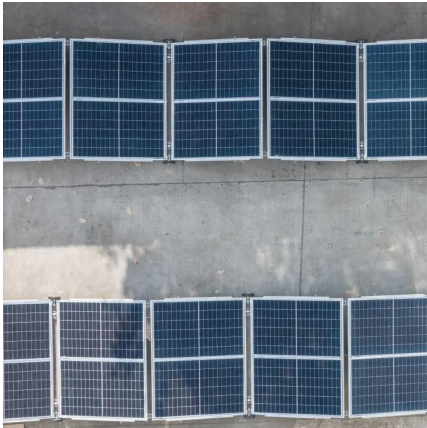
## [Complete Guide to 5G Base Station ...](#)

Nov 17, 2024 · Explore how 5G base stations are built--from site planning and cabinet installation to power systems and cooling solutions. Learn the ...



### [Gateway and Base Station Installation Guide](#)

Aug 11, 2018 · Installation Planning IMPORTANT:  
This document provides guidelines for the proper placement and installation of Gateways, Base Stations, and the antennas. Failure to ...



### [Base Station Installation & Maintenance](#)

Installation and the upgrading of base stations are underway to expand to 5G coverage. To ensure stable communication between a base station and connect with the stability of mobile ...

## Contact Us

---

For catalog requests, pricing, or partnerships, please visit:  
<https://llsolarenergy.co.za>

**Scan QR Code for More Information**



<https://llolarenergy.co.za>