

Base station communication equipment assembly process





Overview

What is a base station PCB?

In the era of advanced wireless communication, base station PCBs (Printed Circuit Boards) serve as the backbone of communication infrastructure, especially for 4G and 5G networks. The manufacturing process of base station PCBs is complex and demands high precision to ensure signal integrity, reliability, and durability.

What are the components of a base station?

The base station will have one or more RF antennas installed to transmit and receive RF signals from other devices. The block diagram of a base station typically includes the following key components: Baseband Processor: The baseband processor too deals with different communication protocols and interfaces with mobile network infrastructure.

What is a communication base station?

In the vast telecommunications network, communication base stations play a frontline role. Positioned closest to end users, they serve as gateways for processing customer requests and managing data flow. In the words of "Interesting Communication Engineering Drawings," these stations act like "business trackers," always vigilant to:.

How does a base station work?

Base stations typically have a transceiver, capable of sending and receiving wireless signals; Otherwise if they only send the trailer it will be considered a transmitter or broadcast point only. The base station will have one or more RF antennas installed to transmit and receive RF signals from other devices.



Base station communication equipment assembly process

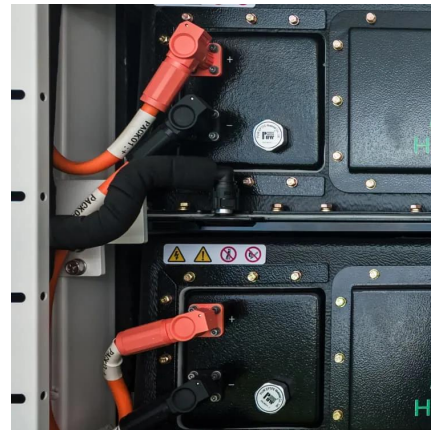


[Process of Installing a Base Transceiver Station \(BTS\)](#)

Dec 12, 2024 · Installing a Base Transceiver Station (BTS) is a critical step in building mobile communication networks. Here's a step-by-step guide to the process: 1.

[Process of Installing a Base Transceiver ...](#)

Dec 12, 2024 · Installing a Base Transceiver Station (BTS) is a critical step in building mobile communication networks. Here's a step-by-step guide to ...



[Complete Guide to 5G Base Station ...](#)

Nov 17, 2024 · Explore how 5G base stations are built--from site planning and cabinet installation to power systems and cooling solutions. Learn the ...



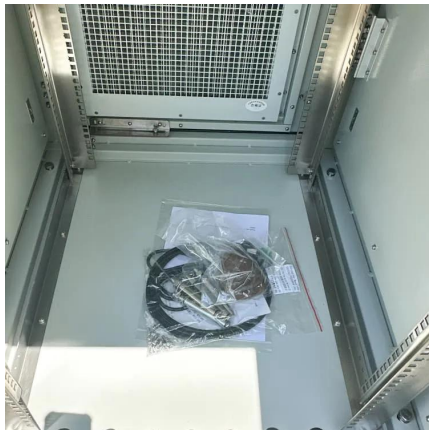
[Equipment Needed to Build a 5G Base Station](#)

Oct 2, 2025 · Overview of 5G base station equipment, components, and layered architecture covering antenna systems, RRU/BBU functions, transmission, power, and monitoring.



[In-Depth Analysis of Base Station PCB Manufacturing Process](#)

Mar 13, 2025 · In the era of advanced wireless communication, base station PCBs (Printed Circuit Boards) serve as the backbone of communication infrastructure, especially for 4G and 5G ...



Base Stations

Jul 23, 2025 · The present-day tele-space is incomplete without the base stations as these constitute an important part of the modern-day scheme of wireless communications. They are ...



[Communication Equipment PCB Manufacturing Guide](#)

Oct 26, 2025 · Professional communication equipment PCB manufacturing for telecom infrastructure, networking devices, and wireless systems with advanced assembly.





Base Station Installation & Maintenance

Installation and the upgrading of base stations are underway to expand to 5G coverage. To ensure stable communication between a base station and connect with the stability of mobile ...



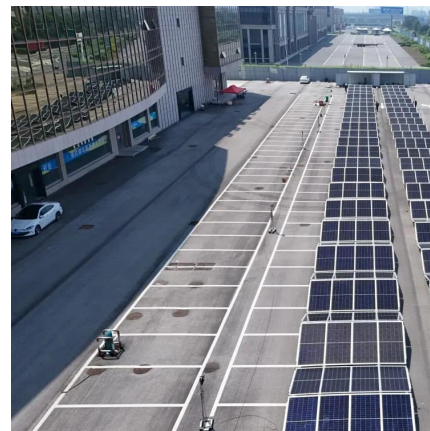
COMONENTS OR 5G BASE STATIONS AND ANTENNAS

base-station connects other wireless devices
base-station architecture includes various equipment, such as a amplifier, which converts signals from RF antennas to (baseband unit in ...



5G communication base station assembly interface equipment

Feb 25, 2022 · A communication base station and interface equipment technology, which is applied in the field of 5G communication base station assembly interface equipment, can solve ...



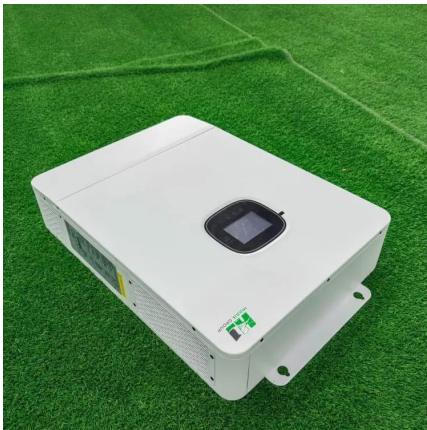
5G communication base station assembly ...

Feb 25, 2022 · A communication base station and interface equipment technology, which is applied in the field of 5G communication base station ...



Baseband Unit (BBU)

The baseband unit (BBU) is a crucial component in mobile base stations, handling tasks like signal processing, resource allocation, and protocol management to ensure efficient ...



[Complete Guide to 5G Base Station Construction Key Steps, Equipment](#)

Nov 17, 2024 · Explore how 5G base stations are built--from site planning and cabinet installation to power systems and cooling solutions. Learn the essential components, technologies, and ...

Contact Us

For catalog requests, pricing, or partnerships, please visit:
<https://llsolarenergy.co.za>

Scan QR Code for More Information



<https://llolarenergy.co.za>