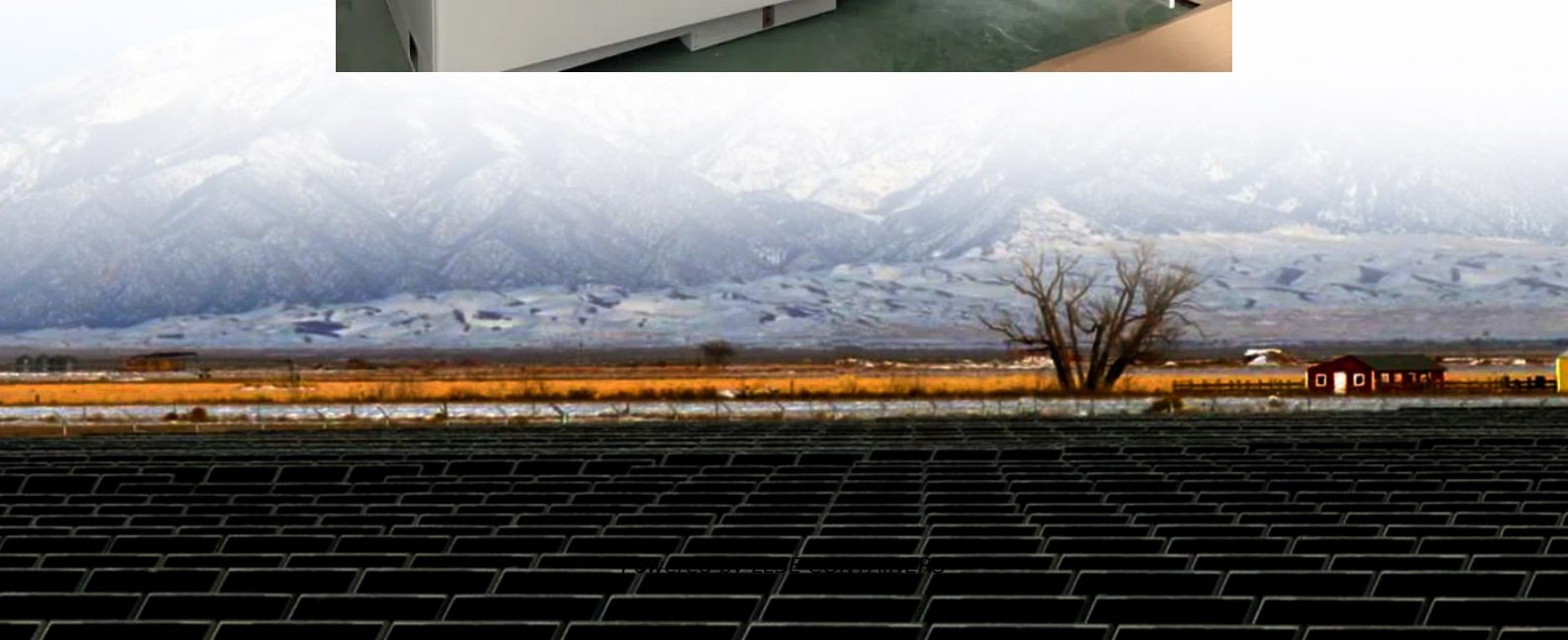


Base station battery pack short circuit





Overview

What makes a telecom battery pack compatible with a base station?

Compatibility and Installation Voltage Compatibility: 48V is the standard voltage for telecom base stations, so the battery pack's output voltage must align with base station equipment requirements. Modular Design: A modular structure simplifies installation, maintenance, and scalability.

What is a short circuit current in a battery?

Battery manufacturers provide a value of short circuit current which needs to be used for validation of proper protection device. Duration of this short circuit current can be of few seconds before a battery failure occurs. The characteristic current and duration changes depending on the battery type.

What is BMS short circuit protection?

BMS short circuit protection specifically refers to the BMS's ability to detect overcurrent or abnormal current flows and respond by isolating faults and shutting down the system. Without BMS short circuit protection, unimpeded current flows can cause batteries to rapidly heat up and face thermal runaway.

What is a battery management system (BMS)?

A Battery Management System is an electronic system that manages battery operations including monitoring key parameters and protecting against issues like short circuits. BMS short circuit protection specifically refers to the BMS's ability to detect overcurrent or abnormal current flows and respond by isolating faults and shutting down the system.



Base station battery pack short circuit



How does short

Jun 19, 2025 · The battery pack should be installed according to the manufacturer's instructions, ensuring that all connections are secure and there is no physical damage to the cells. Using ...

[Main Causes of Shortened Battery Lifespan in Base Stations](#)

Mar 13, 2025 · Battery packs are a crucial part of the base station's DC uninterruptible power supply, with investments comparable to those in switch power supply equipment. Most mobile ...

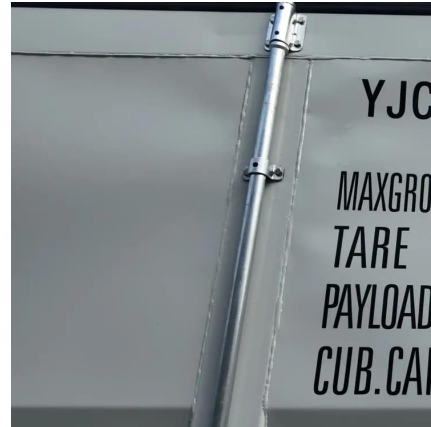


[BMS Short Circuit Protection for Battery Packs](#)

Feb 1, 2024 · Lithium-ion batteries provide high energy density and efficient power for electric vehicles, energy storage systems, and other applications. However, battery short circuits will ...

[BMS Shunt-less Short-circuit](#)

Sep 29, 2025 · The key features include short circuit testing of the evaluation board and battery pack, over-current detection, and short-circuit current detection. These functions are crucial for ...



[Telecom Base Station Backup Power Solution: Design Guide ...](#)

Jun 5, 2025 · Discover the 48V 100Ah LiFePO4 battery pack for telecom base stations: safe, long-lasting, and eco-friendly. Optimize reliability with our design guide.



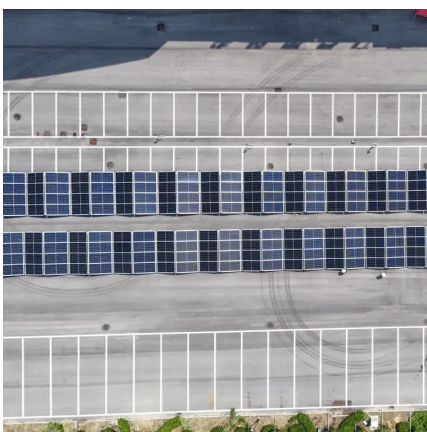
[DESIGN FOR SAFE AND RELIABLE ELECTRICAL ...](#)

Jan 23, 2019 · Unlike the short circuit current generated by the AC sources, generally predictable, the short circuit current generated by the battery is variable and not easily predictable. With an ...



[Early Internal Short Circuit Diagnosis for Lithium-Ion Battery Packs](#)

Oct 28, 2024 · Timely identification of early internal short circuit faults, commonly referred to as micro short circuits (MSCs), is essential yet poses significant challenges for the safe and ...





[Overcurrent protection vs. Short circuit protection in BMS](#)

May 25, 2024 · Overcurrent protection and short circuit protection are vital components of battery management systems (BMS) that ensure the safety and longevity of battery packs. ...



Contact Us

For catalog requests, pricing, or partnerships, please visit:
<https://llsolarenergy.co.za>

Scan QR Code for More Information



<https://llsolarenergy.co.za>