

Are lithium batteries cylindrical





Overview

What is a cylindrical lithium ion battery?

Cylindrical lithium-ion battery cells are a type of rechargeable battery commonly used in a wide range of electronic devices, electric vehicles, and energy storage systems. They are characterized by their cylindrical shape, standardized sizes, and high energy density, making them versatile and suitable for various applications.

What are the different types of lithium ion batteries?

There are three main types of lithium-ion batteries (li-ion): cylindrical cells, prismatic cells, and pouch cells. In the EV industry, the most promising developments revolve around cylindrical and prismatic cells.

What is a cylindrical battery?

Long-term research in high-performance electrode materials, explosion-proof batteries, and low-temperature batteries, with a solid scientific research background and rich practical experience. Cylindrical cells are a type of lithium-ion battery characterized by their cylindrical shape and robust metal casing.

What is the difference between a cylindrical and a prismatic battery?

Cylindrical cells feature a compact, standardized design, making them ideal for modular battery packs. Prismatic cells, on the other hand, offer higher energy density per unit, which suits applications requiring fewer cells.



Are lithium batteries cylindrical



[Prismatic Cells vs. Cylindrical Cells: What is the Difference?](#)

What Are Prismatic Cells
What Are Cylindrical Cells
The Main Differences Between Prismatic and Cylindrical Cells
Why Prismatic Cells Might Be Taking Over
Prismatic Cells in Energy Storage Systems
The Switch to Prismatic Batteries
Shape is not the only thing that differentiates prismatic and cylindrical cells. Other important differences include their size, the number of electrical connections, and their power output. See more on laserax Battle Born Batteries

Pouch vs. Prismatic vs. Cylindrical? Your Lithium Battery ...

Jul 29, 2025 · What's the difference between pouch, prismatic, and cylindrical cells in lithium batteries? Read our guide to find the right battery cell type for your system.

[Pouch vs. Prismatic vs. Cylindrical? Your Lithium Battery Cell ...](#)

Jul 29, 2025 · What's the difference between pouch, prismatic, and cylindrical cells in lithium batteries? Read our guide to find the right battery cell type for your system.



[Comparative Analysis of Cell Design: Form Factor and ...](#)

Oct 20, 2025 · This review investigates how cell form factors (cylindrical, prismatic, and pouch)

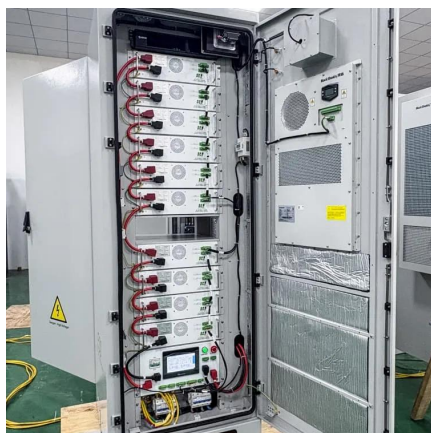


and electrode architecture (jelly-roll, stacked, and blade) influence the performance, safety, ...



Li-ion Battery Manufacture: Cell Shape and Assembly Method

6 days ago · The battery assembly process differs slightly depending on the shape, and so is explained separately for each shape. There are three main shapes of lithium-ion battery: ...

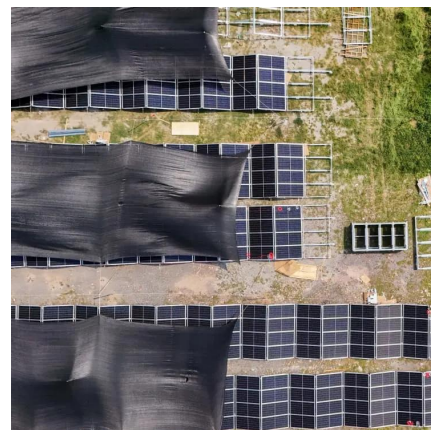


What is a Cylindrical Lithium-Ion Battery?

Sep 10, 2025 · Why Choose Jawepower's Cylindrical Lithium-Ion Batteries? Selecting the right battery supplier is crucial for businesses aiming to maintain reliability and safety. At ...

A Comprehensive Guide to Cylindrical Lithium-Ion Cells

Nov 14, 2025 · The story of cylindrical lithium-ion battery cells traces back to the 1990s, when researchers pioneered the development of rechargeable lithium-ion batteries. The cylindrical ...



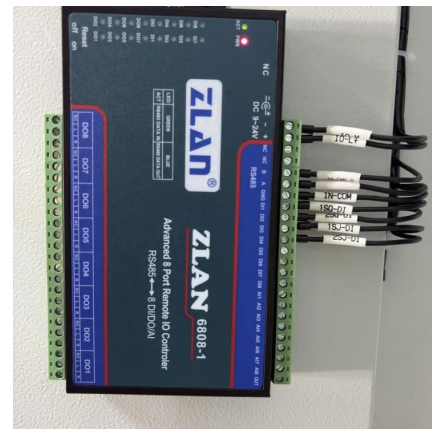


What You Need to Know About Cylindrical Cells

May 20, 2025 · Cylindrical cells are robust lithium-ion batteries with high energy density, scalability, and durability, ideal for electric vehicles and energy storage systems.

Everything You Need to Know About Cylindrical Lithium Batteries

Nov 8, 2025 · Cylindrical lithium batteries power everything from gadgets to EVs. Learn their types, features, pros, and best uses to choose the right battery confidently.

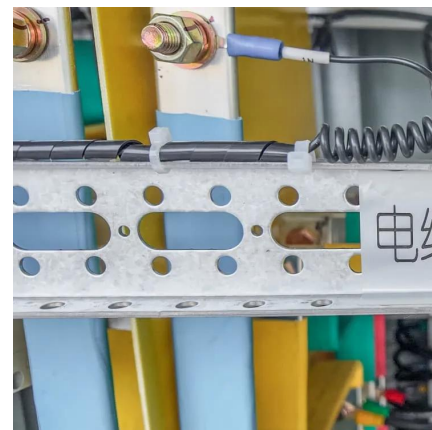


Cylindrical Lithium Batteries Explained: Models, Materials, ...

Nov 24, 2025 · Cylindrical lithium batteries are divided into different systems such as lithium iron phosphate, lithium cobalt oxide, lithium manganese oxide, cobalt-manganese hybrid, and ...

Prismatic Cells vs. Cylindrical Cells: What is the Difference?

Apr 25, 2022 · There are three main types of lithium-ion batteries: cylindrical cells, prismatic cells, and pouch cells. In the EV industry, the most promising developments revolve around ...





Contact Us

For catalog requests, pricing, or partnerships, please visit:
<https://llsolarenergy.co.za>

Scan QR Code for More Information



<https://llsolarenergy.co.za>