

48V to 220V inverter withstand current





Overview

What is a 48 watt inverter?

48V 2000W power inverter with universal socket and USB port, modified sine wave or pure sine wave output waveform are available. Option for 110V/120V or 220V/230V/240V AC 50Hz/60Hz, suitable DC to AC inverter for home use to charge TV, laptop, fans, lights and other appliances. Storage temperature of this 2000 watt inverter between -30 °C to +70 °C.

How much power does a 5000W inverter use?

5000W 48V DC to 220V AC pure sine wave inverter. This inverter operates with a 48V DC voltage compatible with SOLISE lithium batteries. It transforms 48V DC (direct current) into 220V AC (alternating current). Peak power : 10 000W <3sec. STANDARDS Certifications : RoHS I CE Warranty - 2 years.

What is the working temperature of a 48V 5000W inverter?

Working temperature of this 48V 5000W inverter between -10 °C to 50 °C. A 48V power inverter is a device used to convert direct current (DC) electrical power from a 48-volt battery or DC power source into alternating current (AC) power. In terms of functionality, a 48V power inverter typically consists of several key components.

How does a 48V power inverter work?

In terms of functionality, a 48V power inverter typically consists of several key components. These include a DC input, an inverter circuit that converts DC to AC power, control electronics for regulating the output voltage and frequency, and output sockets or terminals to connect AC-powered devices.



48V to 220V inverter withstand current



[48v dc to 230v 220v ac inverters 240v](#)

Jun 3, 2025 · Xindun power factory sales inverter 48v to 220v, 48v to 240v, 48vdc to 230vac. AC inverters high frequency design, high power density, high efficiency, low no-load loss.

[Rack mounted DC to 220V AC high frequency pure sine wave](#)

This rack-mounted inverter converts DC to 220V AC with high-frequency pure sine wave, ideal for telecommunication and other applications.



[Inverter 5000W 48V DC to 220V AC](#)

This inverter operates with a 48V DC voltage compatible with SOLISE lithium batteries. It transforms 48V DC (direct current) into 220V AC (alternating current).

[How to Choose the Best Inverter 48v 220v for Your Power ...](#)

4 days ago · An inverter 48v 220v converts direct current (DC) from a 48-volt battery bank into alternating current (AC) at 220 volts, which is standard household voltage in many countries ...



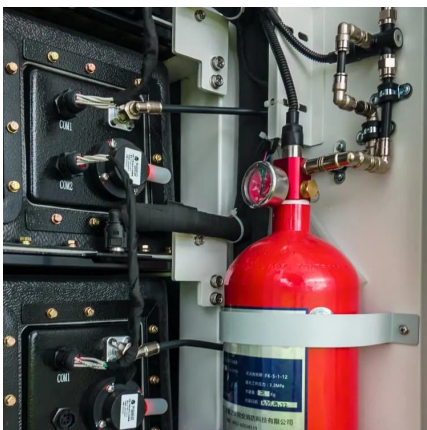
[48v Inverter, 48v DC to 120v/220v AC Power ...](#)

48V 2000W power inverter with universal socket and USB port, modified sine wave or pure sine wave output waveform are available. Option for ...



[Anern 6200W Hybrid Solar Inverter 48V DC to 220-230VAC....](#)

May 14, 2024 · About this item ?PURE SINE WAVE INVERTER?6200W Off-Grid Solar Inverter, 48V, Built-in 120A MPPT Charge Controller, Pure Sine Wave Inverter, Single-phase Output ...



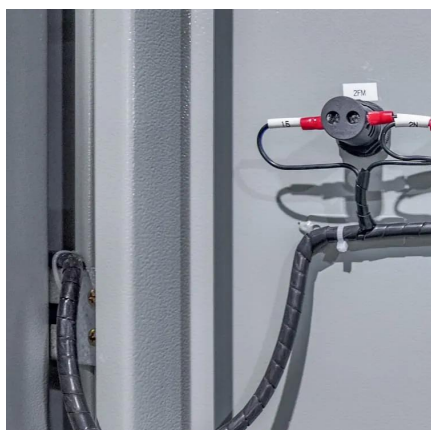
[10.2KW 220Vac 48Vdc All In One Inverter Charger](#)

10.2KW pure sine wave inverter with up to 95% efficiency seamlessly converts 48V DC to 220V AC power and vice versa. Compatible with the grid, solar panels, and generators, it offers ...



Inverter 48V 220V

With its compact design and durable build, this inverter is built to withstand harsh environments, making it suitable for both indoor and outdoor use. Moreover, the inverter 48v 220v is ...

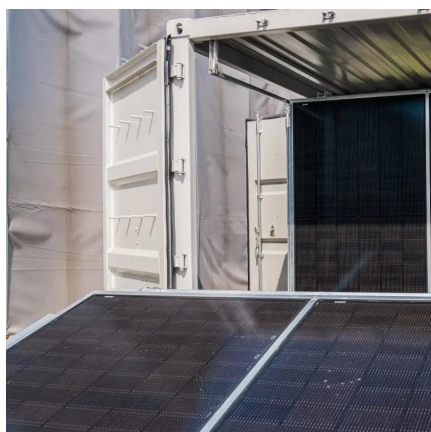


[800 Watt Modified Sine Wave Inverter, ...](#)

The 800W modified sine wave inverter, converting 48VDC to 220VAC with an output power of 800W and a peak power of 1600W, this inverter efficiently ...

[Inverter 5000W 48V DC to 220V AC](#)

This inverter operates with a 48V DC voltage compatible with SOLISE lithium batteries. It transforms 48V DC (direct current) into 220V AC (alternating ...



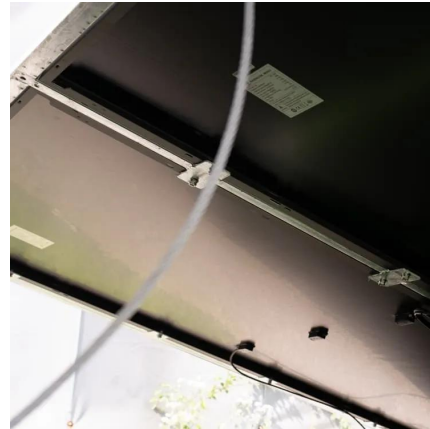
[Best 48V DC to 220VAC Inverters for Reliable Off-Grid and ...](#)

Sep 7, 2025 · Choosing the right 48V DC to 220VAC inverter is essential for powering home appliances, solar off-grid systems, and recreational vehicles efficiently. These inverters convert ...



[800 Watt Modified Sine Wave Inverter, 48VDC to 220VAC](#)

The 800W modified sine wave inverter, converting 48VDC to 220VAC with an output power of 800W and a peak power of 1600W, this inverter efficiently converts DC power from a 48V ...



[48v Inverter, 48v DC to 120v/220v AC Power Inverter, inverter...](#)

48V 2000W power inverter with universal socket and USB port, modified sine wave or pure sine wave output waveform are available. Option for 110V/120V or 220V/230V/240V AC ...

Contact Us

For catalog requests, pricing, or partnerships, please visit:
<https://llsolarenergy.co.za>

Scan QR Code for More Information



<https://llolarenergy.co.za>