

200a battery 100w inverter





Overview

How do I choose the right inverter size for my 200Ah lithium battery?

When it comes to choosing the right inverter size for your 200Ah lithium battery, there are a few factors you'll need to consider. The first is the power needs of the devices you plan on running off the inverter. Take into account their wattage requirements and how many devices will be connected at once.

How do I choose a battery inverter?

Additionally, pay attention to the voltage compatibility between your battery and the chosen inverter. Ensure they are both compatible (most inverters work with standard 12V batteries) and match each other's specifications for optimal performance.

Should I buy a larger inverter?

A larger inverter may seem tempting, but if it exceeds the capacity of your battery, it can drain the battery quickly and reduce its lifespan. So, calculate your power requirements carefully before making a purchase. Additionally, consider investing in a high-quality pure sine wave inverter.

How to maintain a battery & inverter?

Ensure that you have correctly sized cables based on the distance between the battery and the inverter. Moreover, regular maintenance of both your battery and inverter is essential for optimum performance. Keep an eye on their condition and follow manufacturer guidelines for upkeep.



200a battery 100w inverter

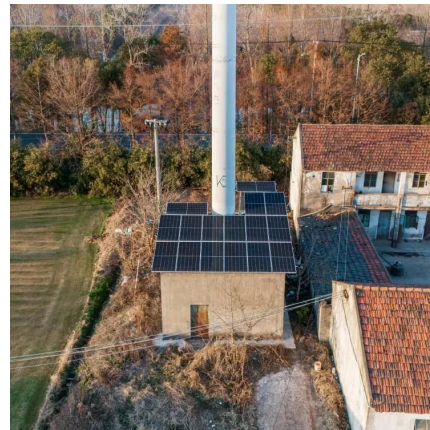


[Which Inverter is Best for 200Ah Battery?](#)

Nov 20, 2025 · Find out which inverter works best with a 200Ah battery for reliable backup and efficient performance. This guide explains ideal inverter types, supported loads, and smart ...

[China 100w Inverter Portable With Lithium Battery ...](#)

Jul 31, 2025 · Introducing the revolutionary 100w Inverter Portable with Lithium Battery, proudly brought to you by V-land International Ltd., a trusted and leading manufacturer, supplier, and ...



[Choosing the Right Inverter Size for a 200Ah Lithium Battery](#)

When selecting an inverter for a 200Ah lithium battery, it is important to understand your energy needs and consider factors such as power consumption, inverter types, and installation ...



[What Size Inverter Can I Run Off a 200Ah Lithium Battery?](#)

Aug 20, 2025 · You can run an inverter rated between 1500W and 2400W off a 200Ah lithium battery depending on voltage and usage. Typically, a 12V 200Ah battery supports up to



about ...



[Energy Storage Inverter 200A/150A/100A LiFePO4 BMS Battery ...](#)

Oct 18, 2025 · Energy Storage Inverter
200A/150A/100A LiFePO4 BMS Battery
Accessories Growatt Deye Connection BMS for
Battery, Find Details and Price about Pb2a16s20p



[What Size Inverter Do I Need for a 200Ah Lithium Battery](#)

Apr 13, 2024 · How do you determine the right
size inverter for a 200Ah lithium battery? The
ideal inverter size depends on your power needs
and the battery's voltage and capacity. For a 12V
...



[Best Inverter for 200Ah Battery: A Complete Guide 2025](#)

Apr 16, 2025 · Find the best inverter for your
200Ah battery setup. Compare top models, get
expert tips, and shop reliable inverters for RVs,
homes, and off-grid use.



[DALY BMS 100A 200A Inverter Home Energy StorageBMS ...](#)

Product sellpoints Bms 8s 24v Lifepo4High-Capacity BMS:Daly Smart BMS supports up to 200A for 8S 24V and 100A for 16S 48V LiFePo4 batteries, ensuring efficient power management.

...



[Choosing the Best Inverter Size for a 200Ah Lithium Battery](#)

Jun 7, 2025 · To calculate the wire and fuse size needed for the inverter you would take the inverter wattage, divide by 12V, then divide by 85% efficiency.

[Which Inverter is Suitable for a 200Ah Battery?](#)

Apr 23, 2025 · Discover Which Inverter is Suitable for a 200Ah Battery? Including recommendations based on power requirements, runtime, and efficiency for different types of ...



Contact Us

For catalog requests, pricing, or partnerships, please visit:
<https://ilsolarenergy.co.za>



Scan QR Code for More Information



<https://llsoleenergy.co.za>