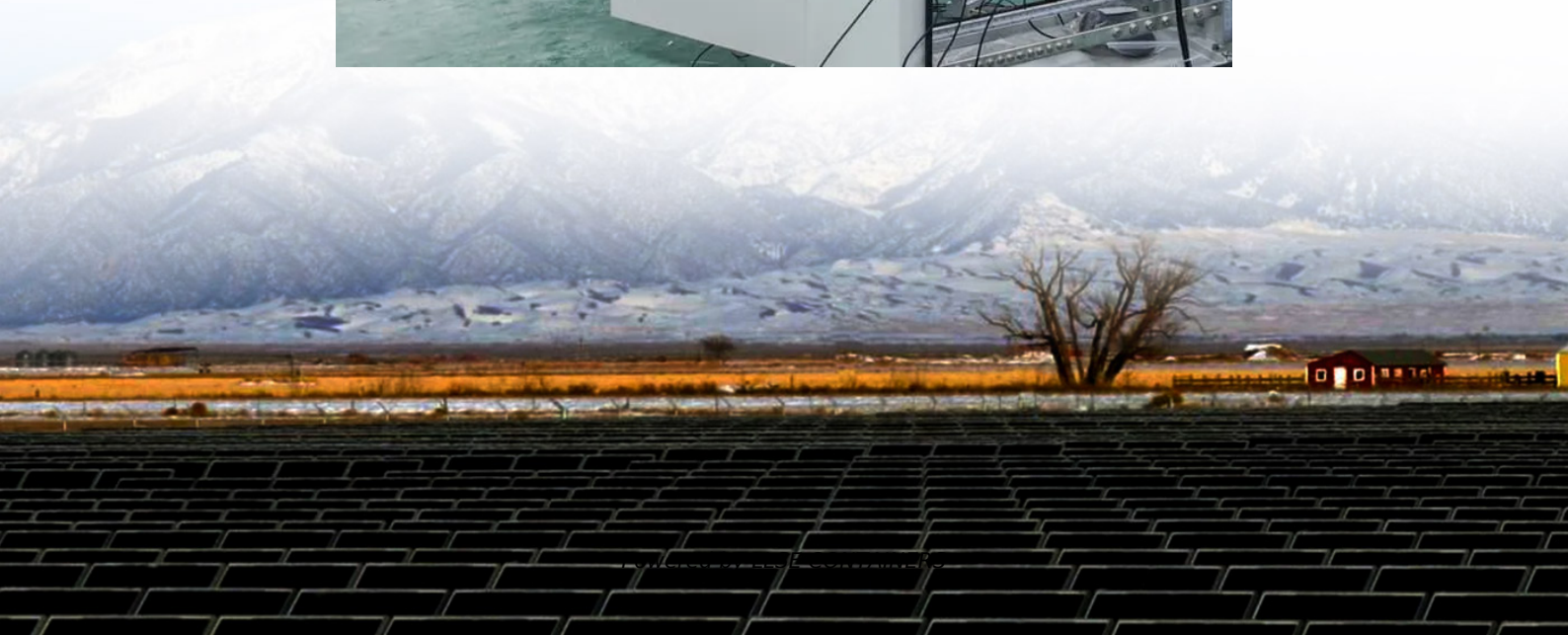


# 20 degrees battery energy storage





## Overview

---

What temperature should a lithium battery be stored?

Proper storage of lithium batteries is crucial for maintaining their performance and extending their lifespan. GycxSolar experts suggest that lithium batteries should be stored in a temperature range of  $-20^{\circ}\text{C}$  to  $25^{\circ}\text{C}$  ( $-4^{\circ}\text{F}$  to  $77^{\circ}\text{F}$ ) when not in use. Within this temperature range, the battery can maintain its capacity and minimize self discharge rate.

What temperature should a battery be stored?

For best results, store batteries within the range of  $-20^{\circ}\text{C}$  to  $25^{\circ}\text{C}$  ( $-4^{\circ}\text{F}$  to  $77^{\circ}\text{F}$ ) when not in use. Storing within this range helps maintain its capacity and reduces the self-discharge rate. Above  $25^{\circ}\text{C}$  ( $77^{\circ}\text{F}$ ): Accelerates the aging process. Below  $-20^{\circ}\text{C}$  ( $-4^{\circ}\text{F}$ ): Can cause irreversible damage to the battery.

What temperature should a lithium ion battery be discharged at?

Optimal Discharging Temperature: Avoid discharging lithium-ion batteries at temperatures below  $-20^{\circ}\text{C}$  ( $-4^{\circ}\text{F}$ ) or above  $60^{\circ}\text{C}$  ( $140^{\circ}\text{F}$ ) to protect their health and prolong their lifespan. Various thermal management systems can be employed to regulate the temperature of lithium-ion batteries during operation.

How does temperature affect battery life?

High temperature conditions accelerate the thermal aging and may shorten the lifetime of LIBs. Heat generation within the batteries is another considerable factor at high temperatures. With the stimulation of elevated temperature, the exothermic reactions are triggered and generate more heat, leading to the further increase of temperature.



## 20 degrees battery energy storage

---



### [Temperature Sensitivity in Energy Storage and Battery ...](#)

May 16, 2025 · By testing these strategies, homeowners can achieve energy storage solutions that best fit their environments. Target Groups and Their Unique Needs in Energy Storage ...

### [Lithium Battery Temperature Range: All the information you ...](#)

Jan 17, 2025 · The temperature of the storage area should be kept stable, with an ideal temperature range of 5 to 20 degrees Celsius. Ensure that the area where the battery is stored ...



### [What is the operating temperature range of 20kwh all](#)

1 day ago · For most 20kWh all-in-one energy storage systems using lithium-ion battery technology, the ideal operating temperature range is typically between 20°C and 30°C (68°F ...

### [Battery technologies for grid-scale energy storage](#)

Jun 20, 2025 · Energy-storage technologies are needed to support electrical grids as the penetration of renewables increases. This Review discusses the application and development ...



## [A Guide to Lithium Battery Temperature](#)

...

Mar 11, 2025 · The ideal operating temperature range for lithium batteries is 15°C to 35°C (59°F to 95°F). For storage, it is best to keep them in a

...

## [Temperature effect and thermal impact in lithium-ion ...](#)

Dec 1, 2018 · Lithium-ion batteries (LIBs), with high energy density and power density, exhibit good performance in many different areas. The performance of LIBs, however, is still limited ...



## [World's 1st 8 MWh grid-scale battery with 541 kWh/m^2 energy ...](#)

Sep 9, 2024 · The world's highest energy density grid-scale battery storage system is housed in a standard 20-foot container. iStock Shanghai-based Envision Energy unveiled its newest large

...

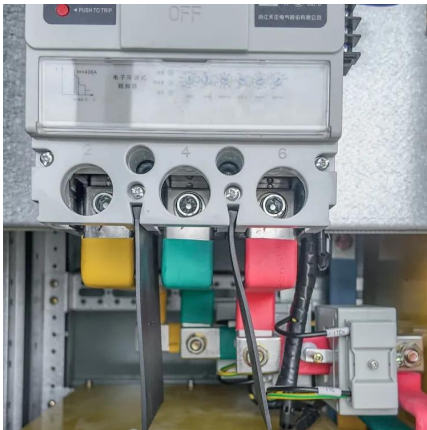






## [How many degrees of energy storage battery , NenPower](#)

Sep 18, 2024 · How many degrees of energy storage battery? Energy storage batteries can operate in various temperature ranges, typically between -20°C to 60°C, depending on the ...



## [A Guide to Lithium Battery Temperature Ranges for Optimal ...](#)

Mar 11, 2025 · The ideal operating temperature range for lithium batteries is 15°C to 35°C (59°F to 95°F). For storage, it is best to keep them in a temperature range of -20°C to 25°C (-4°F to 77°F).

## [How does a 20KW home battery storage perform in extreme ...](#)

Nov 27, 2025 · Our 20KW Home Battery Storage Solutions At our company, we offer a range of high - quality 20KW home battery storage solutions that are designed to perform well in ...



## Contact Us

For catalog requests, pricing, or partnerships, please visit:  
<https://lsolarenergy.co.za>



## Scan QR Code for More Information



<https://llsoleenergy.co.za>