

12v electric pusher connected to inverter





Overview

What is a 12V DC power inverter?

This is where a power inverter comes in. Definition and Working Principle A 12V DC power inverter is a device that converts low-voltage direct current (DC) power from a 12V battery (such as a car battery or deep-cycle battery) into 120V alternating current (AC) power, making it suitable for household appliances and electronic devices.

Does a 240V inverter work on a 4x4?

In simpler terms: your car or 4x4 runs on 12V, but your kettle or laptop charger needs 240V. The inverter acts as the middleman, allowing you to use household devices while camping or on the road. Inverters pull power from your vehicle's 12V battery (or a secondary battery if you have a dual battery system) and boost that power up to 240V AC.

How does a 12V inverter work?

This allows you to use AC-powered electronic devices and appliances in situations where only DC power is available, such as in a car, boat, or during a power outage. The 12v inverter works by using electronic circuitry to rapidly switch the DC power on and off, creating a simulated AC waveform.

How to connect a 12V inverter to a battery?

Once you have understood the wiring components, you can start connecting them according to the 12v inverter wiring diagram. Start by connecting the battery to the inverter using appropriate gauge cables. It is important to use the correct cable size to avoid voltage drop and overheating.



12v electric pusher connected to inverter



[How to Wire Inverter to Battery - No Sparks. ...](#)

Jul 18, 2025 · How to wire an inverter to a battery? Connect the inverter's positive and negative terminals to the battery, add a fuse on the positive ...

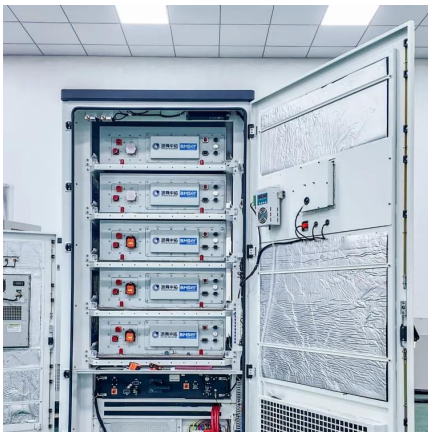
[Push-Pull Inverter 12V to 220V](#)

In this project, we design and construct a 12V to 220V push-pull inverter. This circuit is specifically designed to convert 12V DC into 220V DC, making it ...



[How to Wire Inverter to Battery - No Sparks. Just Power](#)

Jul 18, 2025 · How to wire an inverter to a battery? Connect the inverter's positive and negative terminals to the battery, add a fuse on the positive line, and double-check polarity. Key ...



[Wiring Power Inverters In Cars: A Step-By ...](#)

Jul 23, 2025 · Power inverters are handy gadgets that convert 12V DC input into 110V or 220V AC output. They are useful in cars because they allow ...



[12 Volt DC Power Inverter: In-Depth Learning ...](#)

Mar 31, 2025 · A 12-volt DC power inverter is an essential device for converting 12V direct current (DC) from a battery into 120V alternating ...



[Wiring Power Inverters In Cars: A Step-By-Step Guide](#)

Jul 23, 2025 · Power inverters are handy gadgets that convert 12V DC input into 110V or 220V AC output. They are useful in cars because they allow you to use electronic devices that require ...



[Installing a Power Inverter in Your Car: Step-by-Step Guide ...](#)

Jun 24, 2025 · Grounding the Inverter for Optimal Safety Grounding the inverter is a fundamental step to improve electrical safety and protect connected devices. The grounding process ...





Electric drive pusher 12v

Purchase hybrid, efficient, and high-low frequency electric drive pusher 12v at Alibaba for residential and commercial uses. These electric drive pusher 12v have solar-driven versions too.

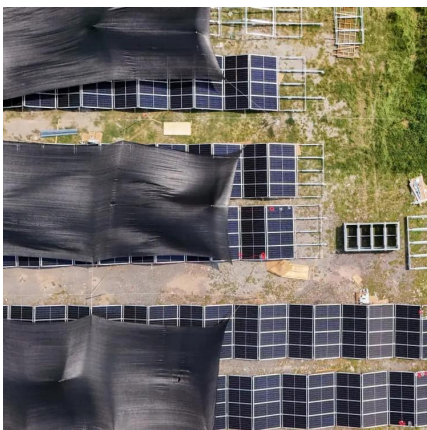


[Correct method for wiring a 12V Battery, Inverter, and Charger?](#)

Oct 16, 2023 · This is my first DIY project using a LifePo4 battery. I purchased a LiTime 12V 230Ah Battery, 12V 2000W Inverter, and 12V 20A Lithium Battery Charger (14.6V). I'd like to ...

inverters

Sep 23, 2024 · Discover how inverters power your 12V electrical system for camping and 4WD adventures. Learn how to size an inverter and see wattage ratings for common camping ...



[12 Volt DC Power Inverter: In-Depth Learning and Buying...](#)

Mar 31, 2025 · A 12-volt DC power inverter is an essential device for converting 12V direct current (DC) from a battery into 120V alternating current (AC), allowing you to power standard ...



[Installing a Power Inverter in Your Car: Step ...](#)

Jun 24, 2025 · Grounding the Inverter for Optimal Safety Grounding the inverter is a fundamental step to improve electrical safety and protect ...



[How to Connect a Large or Small Inverter to a ...](#)

Nov 28, 2017 · When does a small inverter's power come from a 12V DC outlet and when does that inverter need to be connected to a battery? ...

[Push-Pull Inverter 12V to 220V](#)

In this project, we design and construct a 12V to 220V push-pull inverter. This circuit is specifically designed to convert 12V DC into 220V DC, making it suitable for powering devices with AC ...



[How to Connect a Large or Small Inverter to a Battery](#)

Nov 28, 2017 · When does a small inverter's power come from a 12V DC outlet and when does that inverter need to be connected to a battery? The basic decision is based on the maximum ...



Contact Us

For catalog requests, pricing, or partnerships, please visit:
<https://llsolarenergy.co.za>

Scan QR Code for More Information



<https://llsolarenergy.co.za>